

full parts breakdown...

920102W(Bowl) + 920100W(Tank)

Tank Lid

920100W-LID*



Dual Flush Buttons

B5502 (Chrome)



Inlet/Fill Valve

B3300-MA

(The part inside a toilet tank that fills the tank with water and prevents water from overflowing)

Outlet/Flush Valve

B4920 - G - 920100

(The part inside a toilet tank that brings water from the tank into the bowl and initiates the flush)

Consists of Base + Head.

Tank to Bowl Foam Seal

687214

Soft Close Seat

326202W

Consists of Seat + Fixing Kit

Bolt Cover Caps

687086-CAP



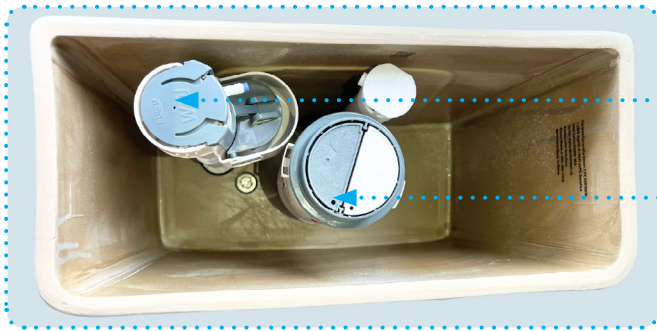
Smart Connect Kit & Bowl Fixing Kit

415245 & 687087

* Not available on the parts store, please call +1 800 460 7019 to inquire about getting a replacement tank lid.



Caroma Caravelle Smart Top Button Dual Flush 2-Piece Toilet Suite



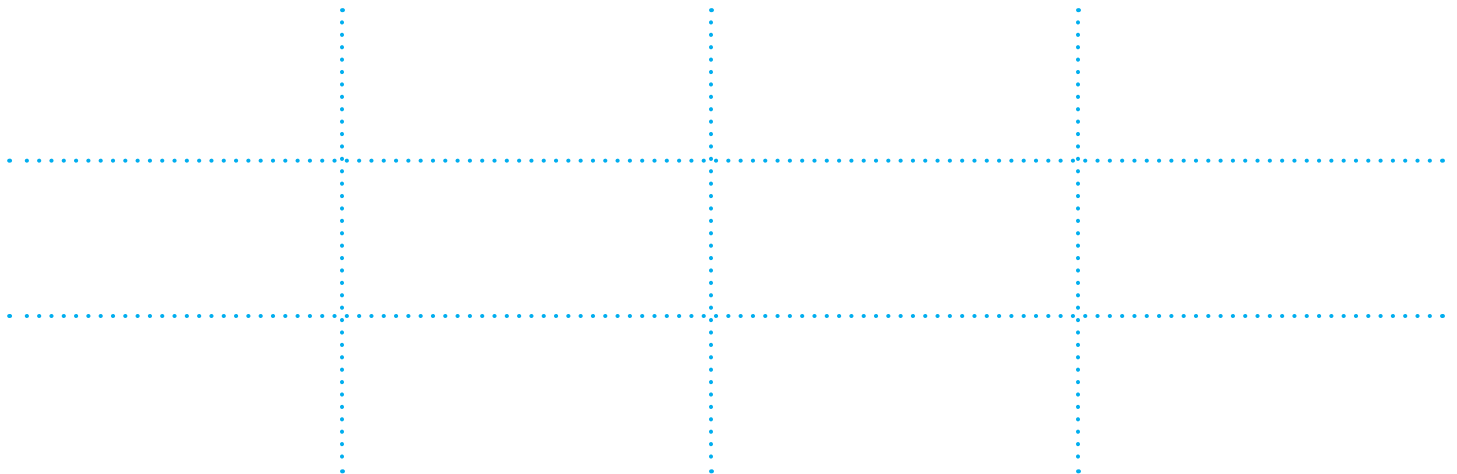
Inlet/Fill Valve

B3300-MA

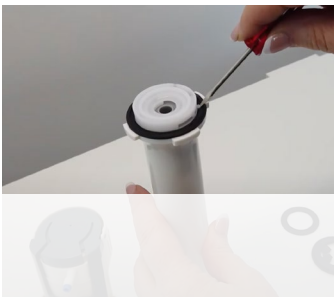
Outlet/Flush Valve

B4920 - G - 920100W

Shop Toilet Repair & Maintenance Parts:



Repair & Maintenance How To Videos: (Click here to link to the full youtube playlist)



Need Help?

Email help@sustainable-solutions.com or call 1 800 460 7019