

Tank Lid
989900-LID*

Dual Flush Push Button
B5502



Inlet/Fill Valve
B3300-MA
(The part inside a toilet tank that fills the tank with water and prevents water from overflowing)



Outlet/Flush Valve
B4920-U-989900
(The part inside a toilet tank that brings water from the tank into the bowl and initiates the flush)

Consists of Base + Head.

Bolt Cover Caps
687086-CAP

Soft Close Detachable Seat
326611W
Consists of Seat + Fixing Kit



**Smart Connect Kit &
Bowl Fixing Kit**
415245 & 687087

* Not available on the parts store, please call +1 800 460 7019 to inquire about getting a replacement tank lid.



Caroma Caravelle Smart Dual Flush 1-Piece Button Toilet



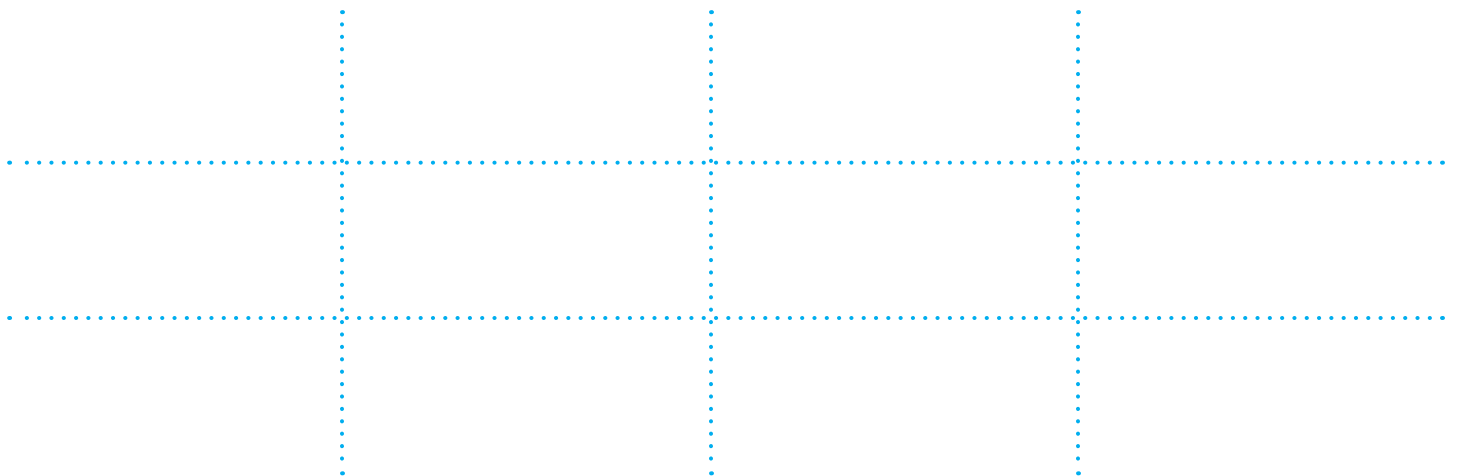
Inlet/Fill Valve

B3300-MA

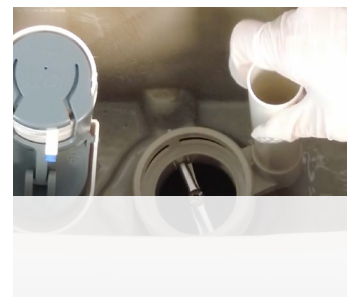
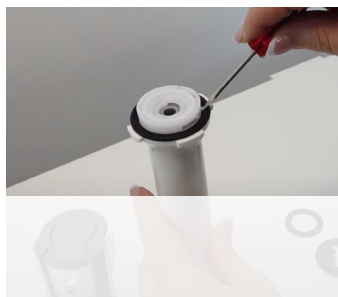
Outlet/Flush Valve

B4920-U-989900

Shop Toilet Repair & Maintenance Parts:



Repair & Maintenance How To Videos: (Click here to link to the full youtube playlist)



Need Help?

Email help@sustainable-solutions.com or call 1 800 460 7019