

## Caroma Sydney Smart Dual Flush 1-Piece Lever Toilet

### Dual Flush Lever Handle

A2423330200 (left lever)

A2423330200-R (right lever)



### Tank Lid

987200-LID\*



### Inlet/Fill Valve

A1280

(The part inside a toilet tank that fills the tank with water and prevents water from overflowing)



### Outlet/Flush Valve

A24233-U-987200

(The part inside a toilet tank that brings water from the tank into the bowl and initiates the flush)

**Consists of Base + Head.**

### Bolt Cover Caps

687086-CAP

### Soft Close Seat

326202W

**Consists of Seat + Fixing Kit**



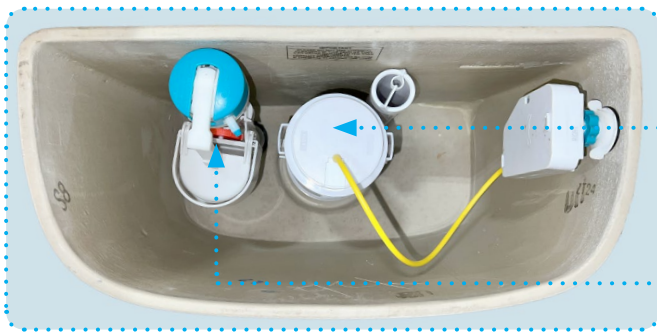
### Smart Connect Kit & Bowl Fixing Kit

415245 & 687087

\*Not available on the parts store, please call +1 800 460 7019 to inquire about getting a replacement tank lid.



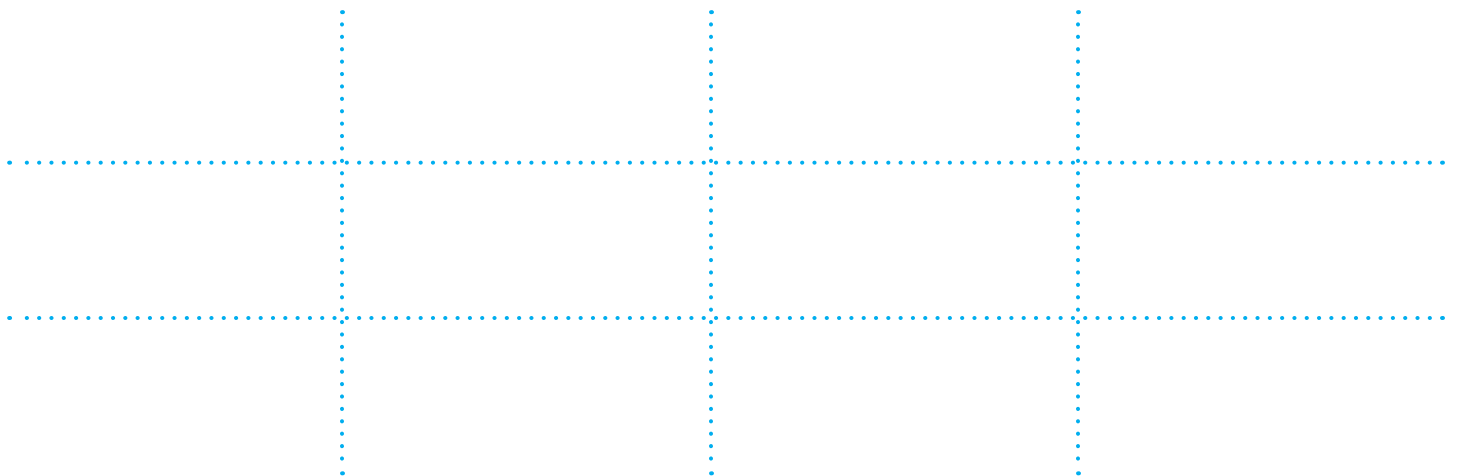
**Caroma Sydney Smart Dual Flush 1-Piece Lever Toilet**



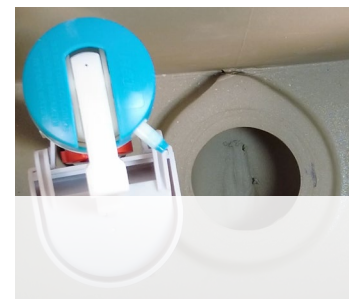
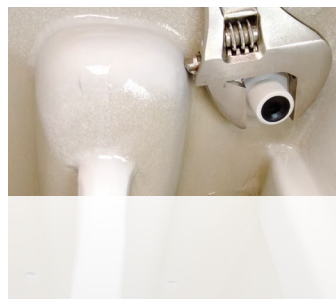
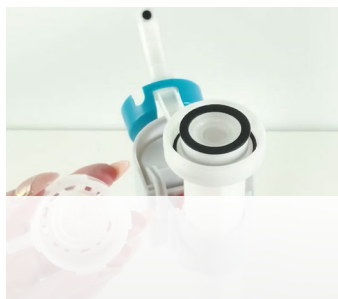
**Outlet/Flush Valve**  
A24233-U-987200

**Inlet/Fill Valve**  
A1280

**Shop Toilet Repair & Maintenance Parts:**



**Repair & Maintenance How To Videos: (Click here to link to the full youtube playlist)**



**Need Help?**

Email [help@sustainable-solutions.com](mailto:help@sustainable-solutions.com) or call 1 800 460 7019