

Quad Rain Shower and Hand Shower Trim Kit

F162025TMB

Specifications:

- ➔ Metal construction for durability and reliability
- ➔ Pressure balancing volume control with 2-way two handle diverting
- ➔ Max-temperature limit stop for added safety
- ➔ Integral stop check valves for easy maintenance
- ➔ Valve and trim packages are sold separately
- ➔ Requires the fluid F1012B pressure balancing valve, (sold separately and available with shut off or **sharing in solder, PEX and PEX-W.)

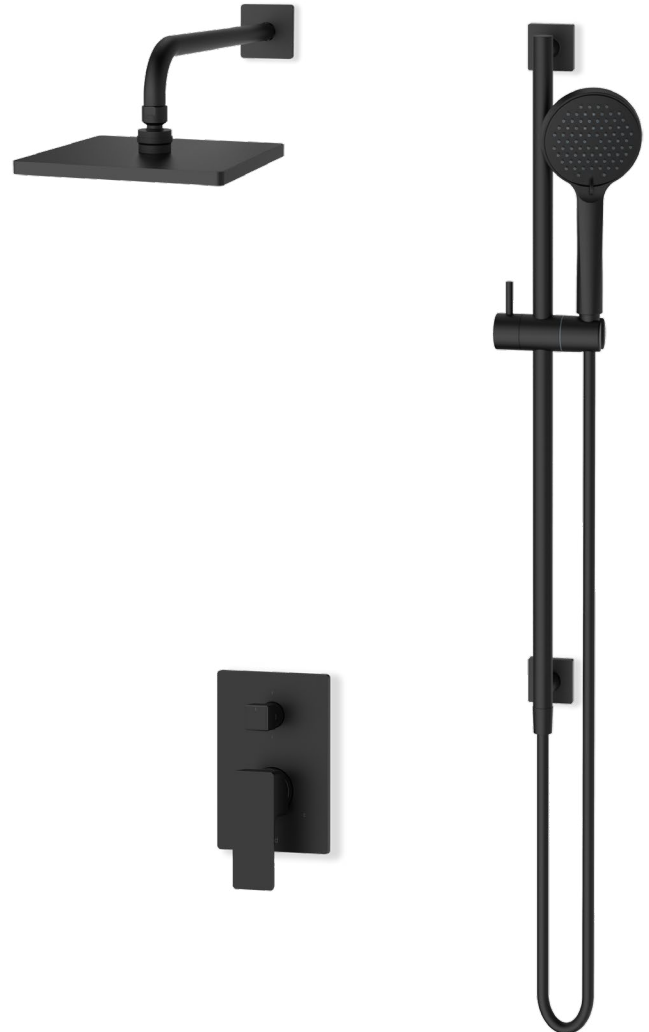
Components:

F1001TMB	Cartridge Sleeve
FP6016041MB	Quad Handle
FP605752MB	Square Diverter Handle
FP801013MB	Diverter Sleeve Tube
FP6001143MB-2PB	Square Cover Plate
FP6001150MB	8" Rain Shower Head
FP6007108MB	16" Shower Arm
FA803MB	Square Slide Bar
FP40130MB	3 Function Hand Shower
FP6001007MB	60" Shower Hose

**sharing available where allowed by code

Features:

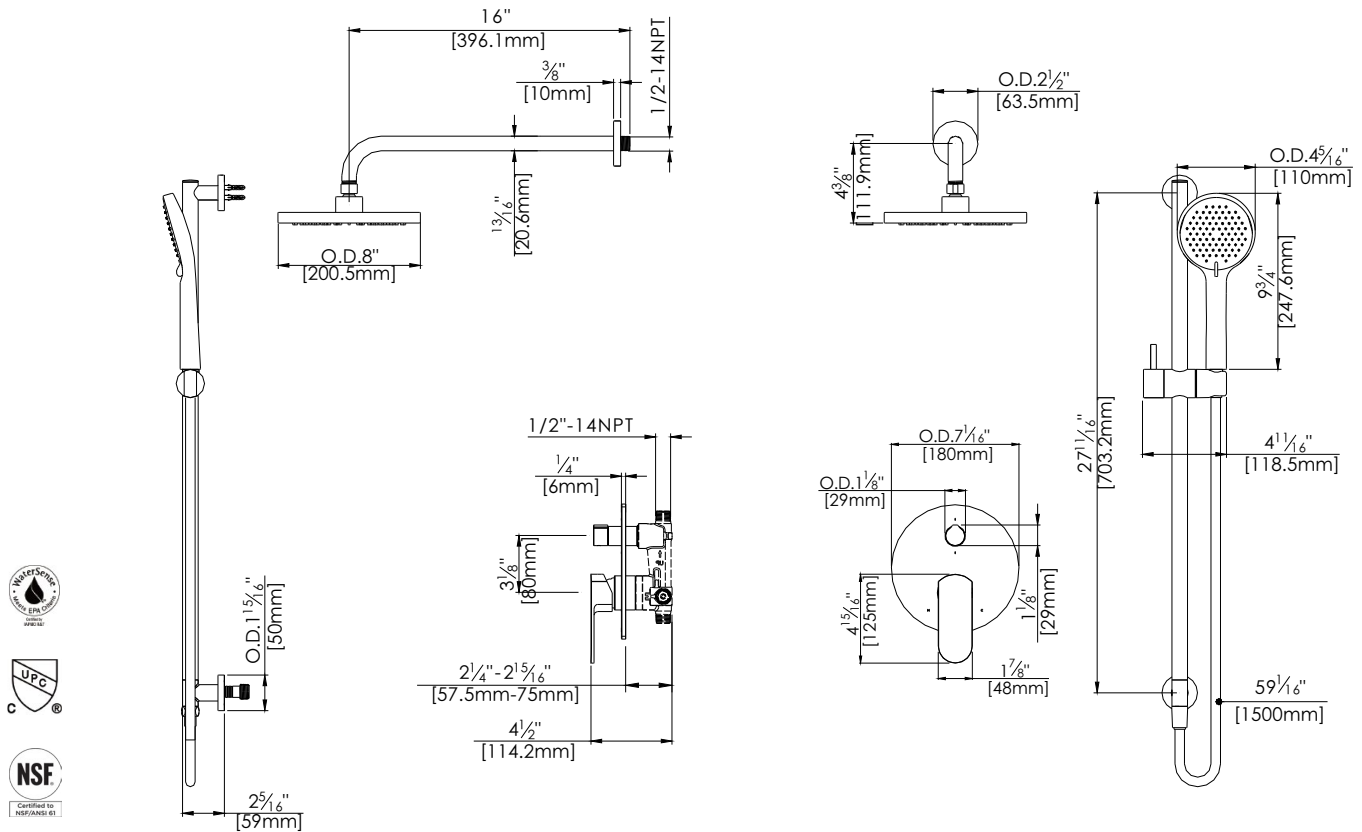
-  Requires F1012B
-  Bubble Level
-  Integral Stops
-  Speed Connect



Available in Matte Black

Technical Drawing

F162025TMB



Codes and Standards: ANSI/ASME A112.18.1, CSA B125.1, IAPMO /cUPC Listed, EPA Watersense Listed

Warranty:

Limited Lifetime Faucet Warranty against material and manufacturing defects for residential use.

2 Year Limited Warranty on all industrial, commercial and business applications.

Kit Variations:



Kit with alternate ADA diverter handle: **F162025TMB-AR**

Flow Rate:

Shower Head 1.8 gpm @ 60 psig
Hand Shower 1.8 gpm @ 60 psig

Low Flow Alternative: Hand Shower @ 1.5 gpm: **F162025TMB-15**