




Specifications:

- Metal construction for durability and reliability
- Pressure balancing volume control (2-way, single handle diverting)
- Max-temperature limit stop for added safety
- Integral stop check valves for easy maintenance
- Valve and trim packages are sold separately
- Requires the fluid F1002B pressure balancing valve, (sold separately and available with shut off in solder, PEX and PEX-W.)

Components:

| | | |
|---------------|-------|------------------|
| F1001TMB | | Cartridge Sleeve |
| FP6024041MB | | Citi Handle |
| FP6001035-2PS | | Cover Plate |
| FP6016008MB | | 8" Shower Arm |
| FP10120MB | | 4" Shower Head |
| FP6098035LMB | | Round Tub Spout |

Features:

-  Requires F1002B
-  Bubble Level
-  Integral Stops

Citi Tub and 4" Shower Head Trim Kit

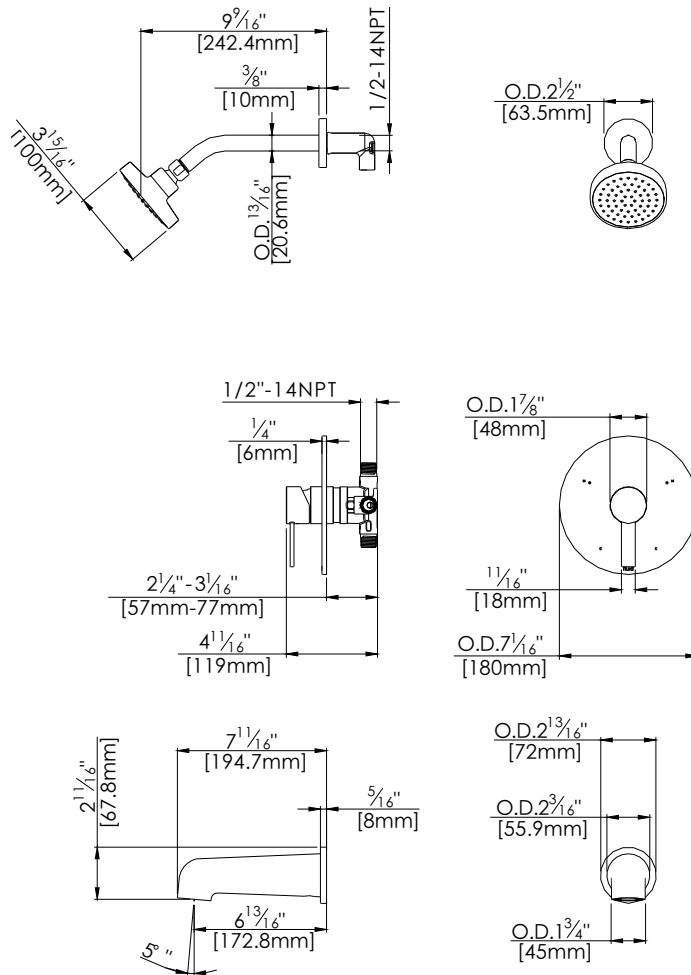
F244107TMB



Available in Matte Black

Technical Drawing

F244107TMB



Warranty:

Limited Lifetime Faucet Warranty
against material and manufacturing
defects for residential use.

2 Year Limited Warranty on all industrial,
commercial and business applications.

Codes and Standards:

ANSI/ASME A112.18.1, CSA
B125.1, IAPMO / cUPC Listed, EPA
Watersense Listed

Flow Rate:

Shower Head 1.8 gpm @ 60 psig

Tub Spout 4.5 gpm @ 60 psig

Low Flow Alternative: Shower Head @
1.5 gpm: **F244107TMB-15**