

Citi Shower Head & Hand Shower Trim Kit

F244111TMB

Specifications:

- Metal construction for durability and reliability
- Pressure balancing single handle 2-way Diverting
- Max-temperature limit stop for added safety
- Integral stop check valves for easy maintenance
- Valve and trim packages are sold separately
- Requires the fluid F1002B pressure balancing valve, (sold separately and available with shut off in solder, PEX and PEX-W.)

Components:

F1001TMB	Cartridge Sleeve
FP6024041MB	Citi Handle
FP6001035MB-2PS	Cover Plate
FP6016008MB	8" Shower Arm
FP10120MB	4" Shower Head
FA802MB	Slide Bar
FP40130MB	3 Function Hand Shower
FP6001007MB	60" Shower Hose

Features:

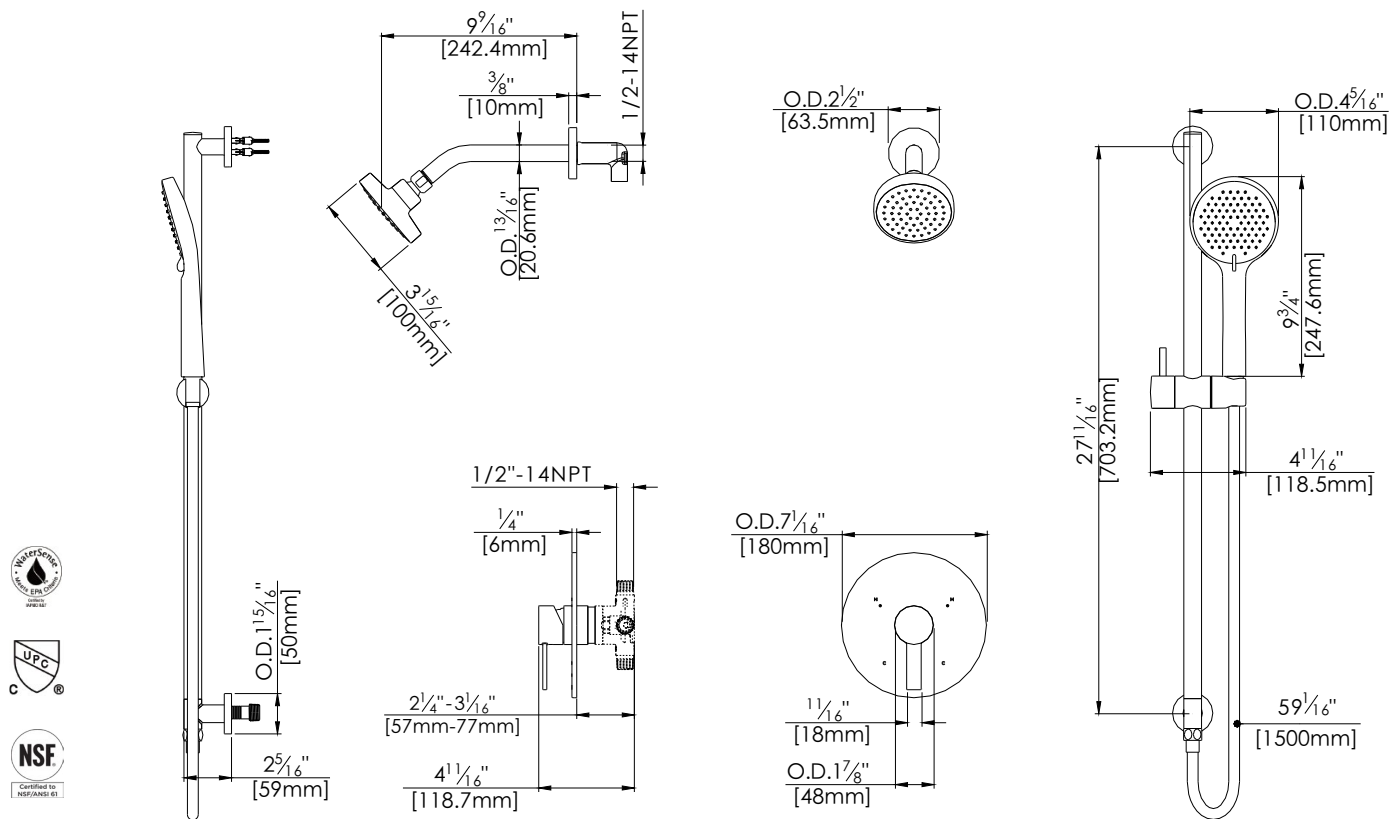
- | | |
|---|---|
|  Requires F1002B |  Bubble Level |
|  Integral Stops |  Speed Connect Slide Bar |



Available in Matte Black

Technical Drawing

F244111TMB



Warranty:

Limited Lifetime Faucet Warranty against material and manufacturing defects for residential use.

2 Year Limited Warranty on all industrial, commercial and business applications.

Codes and Standards:

ANSI/ASME A112.18.1, CSA B125.1, IAPMO/cUPC Listed, EPA WaterSense Listed

Flow Rate:

Shower Head 1.8 gpm @ 60 psig
Hand Shower 1.8 gpm @ 60 psig

Low Flow Alternative: Shower Head & Hand Shower @ 1.5 gpm:

F244111TMB-15