

Wisdom Tub, 6" Shower Head & Hand Shower Trim Kit

F283029TMB

Specifications:

- Metal construction for durability and reliability
- Pressure balancing volume control with 3-way two handle diverting
- Max-temperature limit stop for added safety
- Integral stop check valves for easy maintenance
- Valve and trim packages are sold separately
- Requires the fluid F1003B pressure balancing valve, (sold separately and available with shut off or ****sharing** in solder, PEX and PEX-W.)

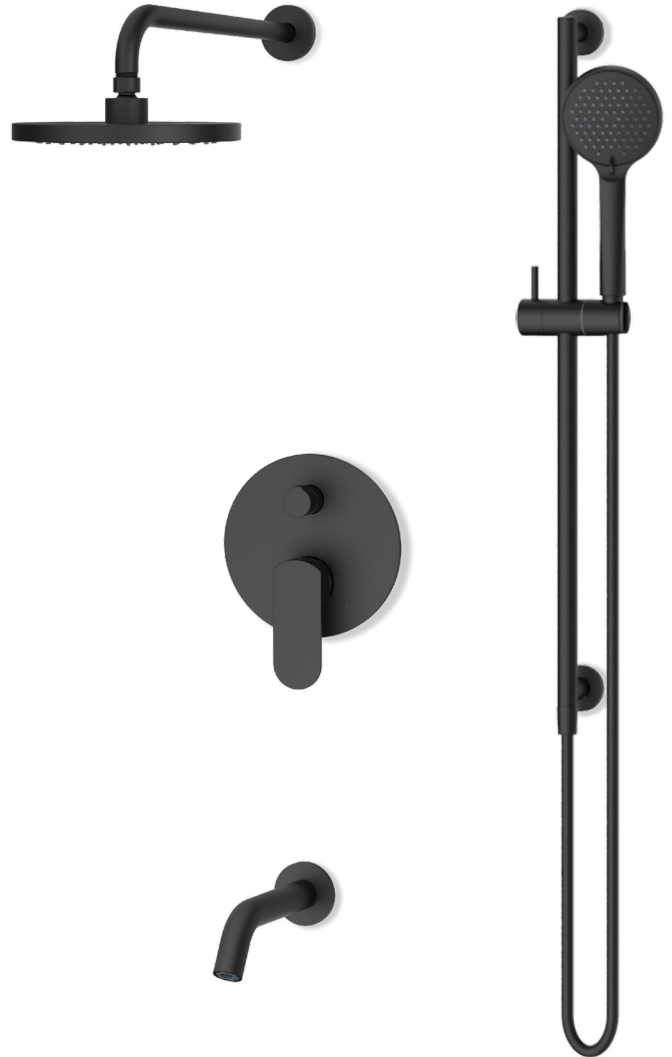
Components:

F1001TMB	Cartridge Sleeve
FP6028341MB	Wisdom Handle
FP801013MB	Diverter Sleeve
FP605652MB	Diverter Handle
FP6001142MB-3PB	Cover Plate
FP6006008MB	16" Shower Arm
FP6002150MB	8" Shower Head
FA802MB	Slide bar
FP40130MB	3 Function Hand Shower
FP6001007MB	60" Hose
FP6057034MB	Pipe Tub Spout

****sharing** available where allowed by code

Features:

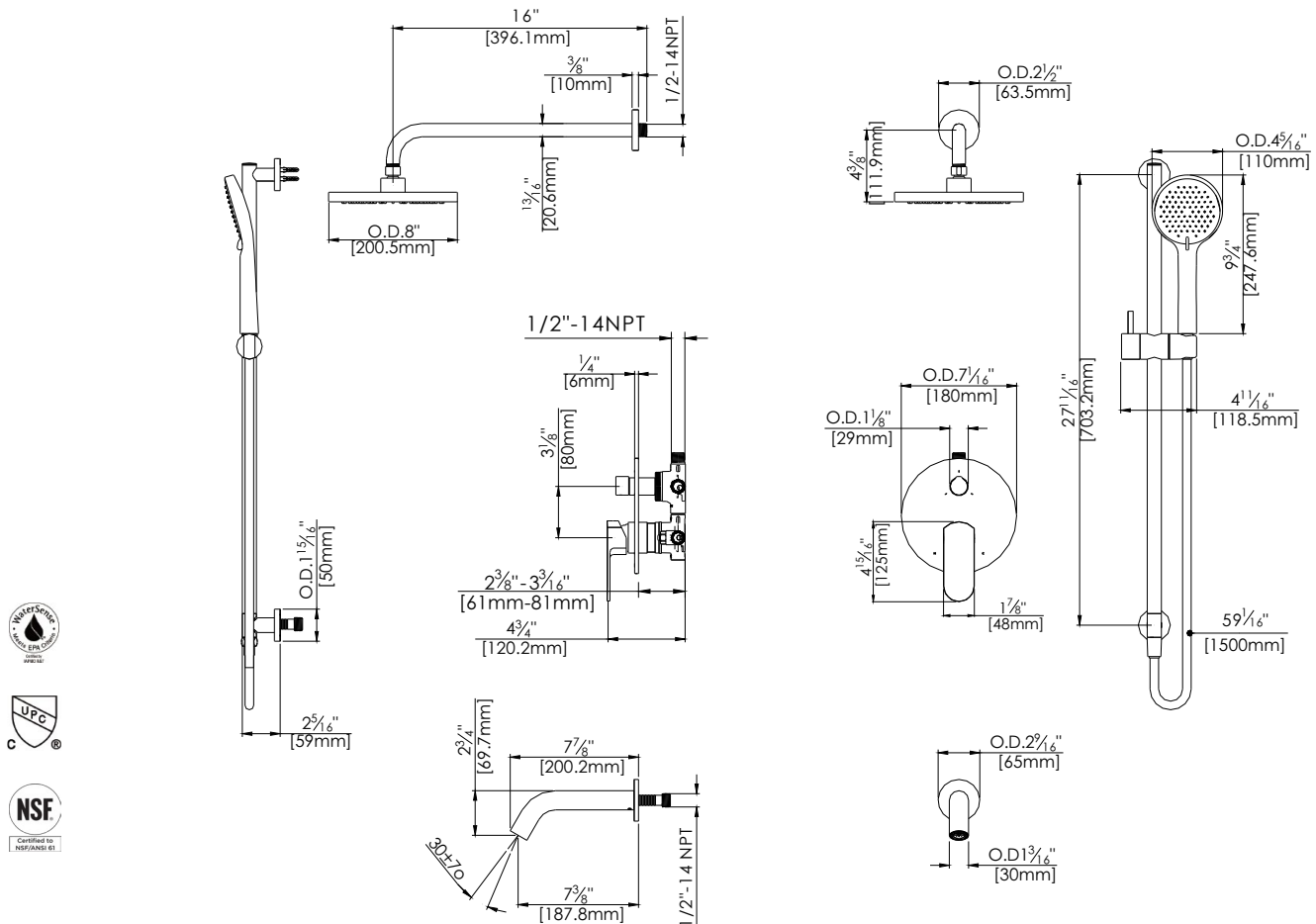
-  Requires F1003B
-  Bubble Level
-  Integral Stops
-  Speed Connect



Available in Matte Black

Technical Drawing

F283029TMB



Codes and Standards: ANSI/ASME A112.18.1, CSA B125.1, IAPMO /cUPC Listed, EPA Watersense Listed

Warranty:

Limited Lifetime Faucet Warranty against material and manufacturing defects for residential use.

2 Year Limited Warranty on all industrial, commercial and business applications.

Kit Variations:



Kit with alternate ADA diverter handle: **F283029TMB-AR**

Flow Rate:

Hand Shower 1.8 gpm @ 60 psig
 Shower Head 1.8 gpm @ 60 psig
 Tub spout 4.5 gpm @ 60 psig

Low Flow Alternative: Hand Shower @ 1.5 gpm: **F283029TMB-15**