

Wisdom 6" Shower Head Trim Kit

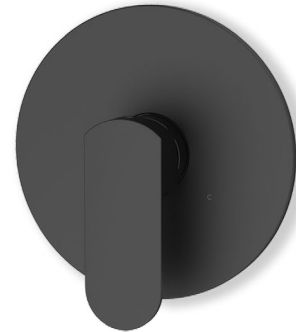
F281037TMB

Specifications:

- Metal construction for durability and reliability
- Pressure balancing volume control (non-diverting)
- Max-temperature limit stop for added safety
- Integral stop check valves for easy maintenance
- Valve and trim packages are sold separately
- Requires the fluid F1001B pressure balancing valve, (sold separately and available with shut off in solder, PEX and PEX-W.)

Components:

F1001TMB Cartridge Sleeve
FP6028341MB Wisdom Handle
FP6001035-1PB Cover Plate
FP6016008MB 8" Shower Arm
FP6000350MB 6" Shower Head



Features:



Requires F1001B



Bubble Level

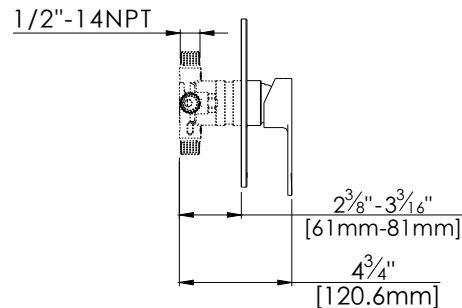
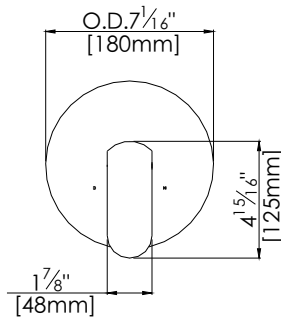
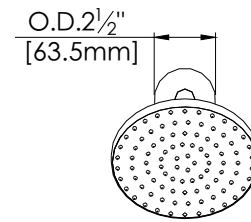
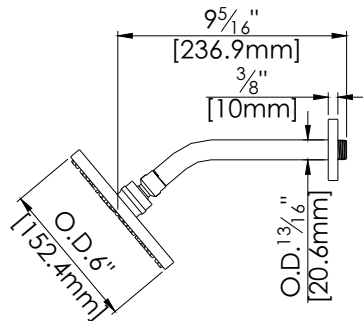


Integral Stops

Available in Matte Black

Technical Drawing

F281037TMB



Warranty:

Limited Lifetime Faucet Warranty
against material and manufacturing
defects for residential use.

2 Year Limited Warranty on all industrial,
commercial and business applications.

Codes and Standards:

ANSI/ASME A112.18.1, CSA
B125.1, IAPMO / cUPC Listed, EPA
WaterSense Listed

Flow Rate:

Shower Head 1.8 gpm @ 60 psig

Low Flow Alternative: Shower Head @
1.5 gpm: **F281037TMB-15**