

Quad Hand Shower Only Trim Kit

F161019TMB

Specifications:

- Metal construction for durability and reliability
- Pressure balancing volume control (non-diverting)
- Max-temperature limit stop for added safety
- Integral stop check valves for easy maintenance
- Valve and trim packages are sold separately
- Requires the fluid F1001B pressure balancing valve, (sold separately and available with shut off in solder, PEX and PEX-W.)

Components:

F1001TMB	Cartridge Sleeve
FP6016041MB	Quad Handle
FP6001033MB -1PB	Square Cover Plate
FA803MB	Square Slide Bar
FP40130MB	3 Function Hand Shower
FP6001007MB	60" Shower Hose

Features:

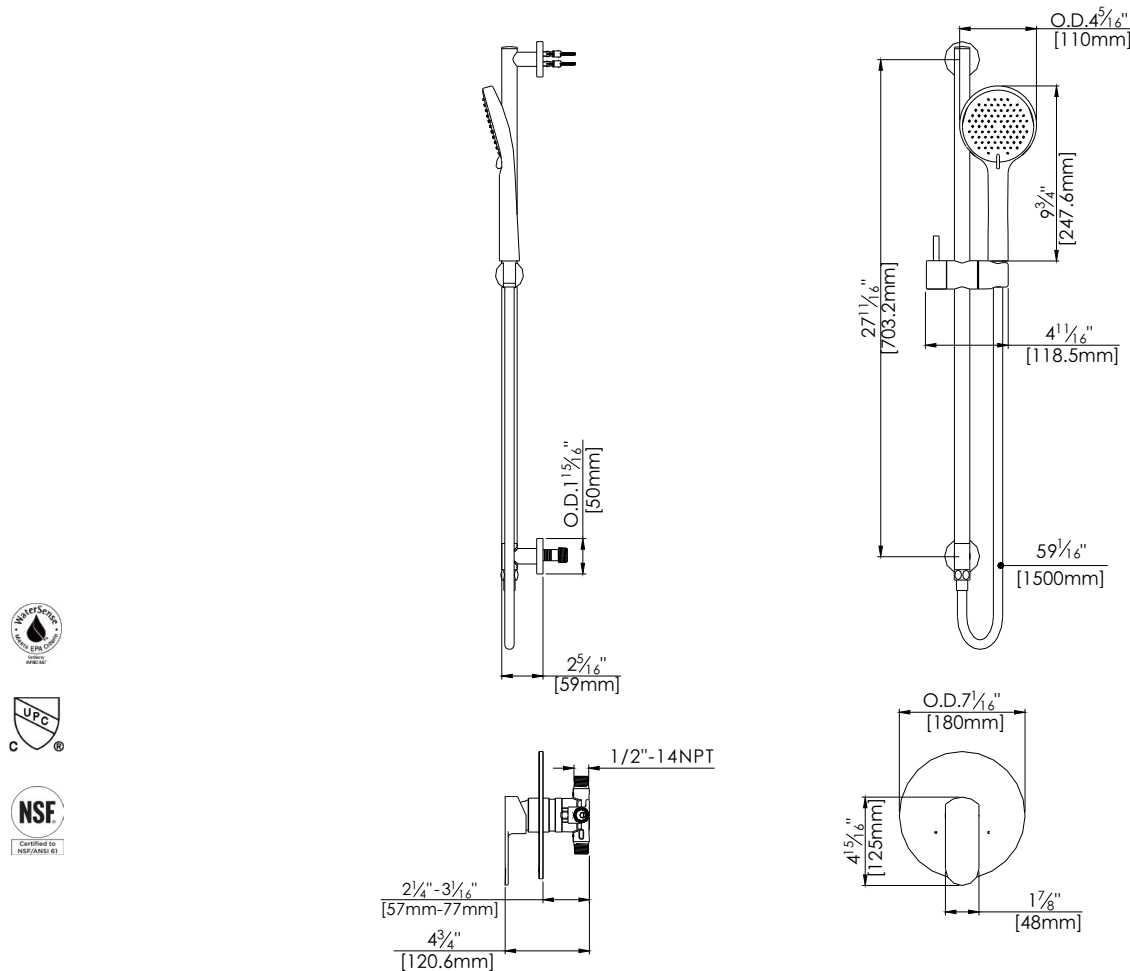
-  Requires F1001B
-  Bubble Level
-  Integral Stops
-  Speed Connect



Available in Matte Black

Technical Drawing

F161019TMB



Warranty:

Limited Lifetime Faucet Warranty
against material and manufacturing
defects for residential use.

2 Year Limited Warranty on all industrial,
commercial and business applications.

Codes and Standards:

ANSI/ASME A112.18.1, CSA
B125.1, IAPMO /cUPC Listed, EPA
WaterSense Listed

Flow Rate:

Hand shower 1.8 gpm @ 60 psig

Low Flow Alternative: Hand Shower @
1.5 gpm: **F161019TMB-15**