

Specifications:

- Metal construction for durability and reliability
- 2-way diverting pressure balancing shower system
- Max-temperature limit stop for added safety
- Integral stop check valves for easy maintenance
- Valve and trim packages are sold separately
- Requires the fluid F1002B pressure balancing valve, (sold separately and available with shut off in solder, PEX and PEX-W.)

Components:

F1001TMB	Cartridge Sleeve
FP6028341MB	Wisdom Handle
FP6001035MB-2PS	Cover Plate
FP6016008MB	8" Shower Arm
FP20100MB	5 Function Shower Head
FA802MB	Slide bar
FP40130MB	3 Function Hand Shower
FP6001007MB	60" Hose

Features:

-  Requires F1002B
-  Bubble Level
-  Integral Stops
-  Speed Connect

Wisdom 5 Function Shower Head & Hand Shower Trim Kit

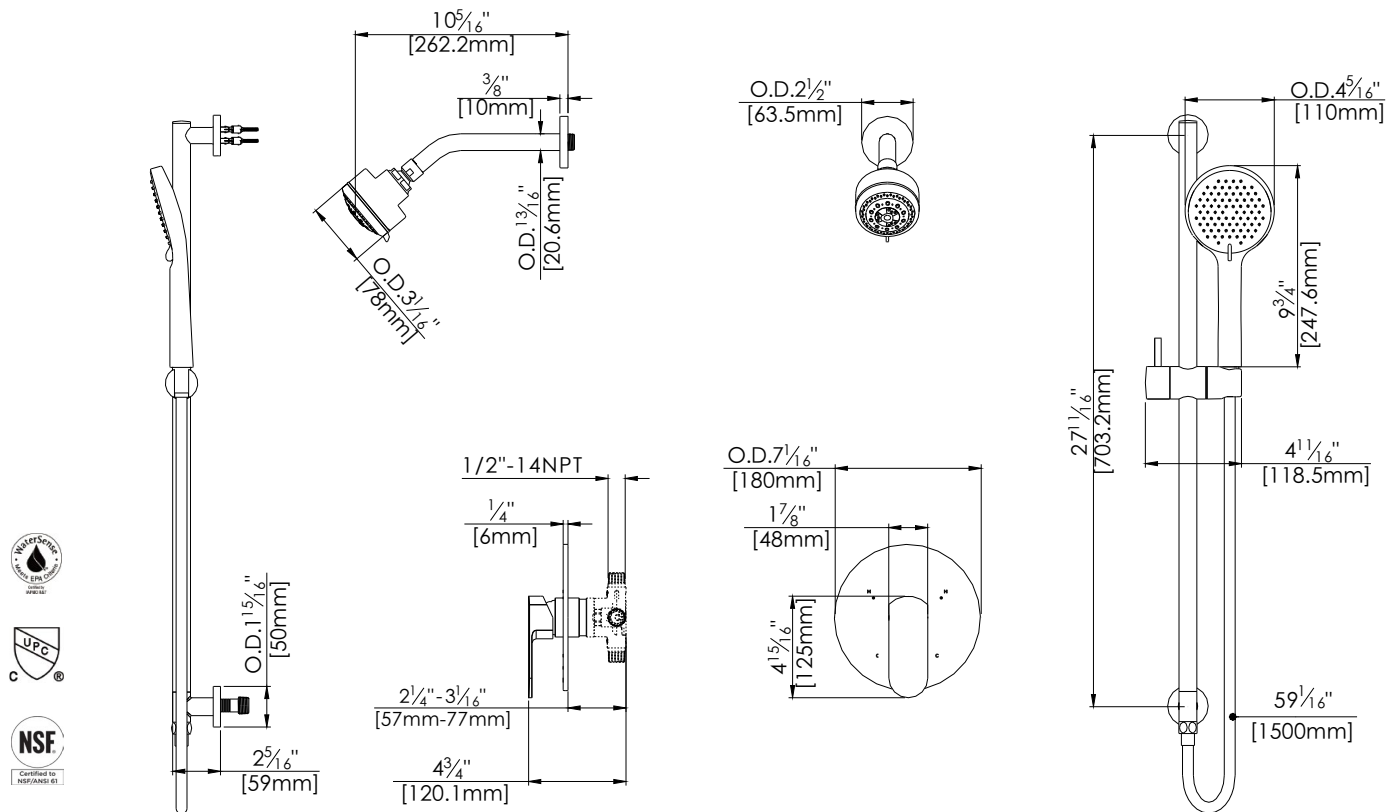
F284214TMB



Available in Matte Black

Technical Drawing

F284214TMB



Warranty:

Limited Lifetime Faucet Warranty
against material and manufacturing
defects for residential use.

2 Year Limited Warranty on all industrial,
commercial and business applications.

Codes and Standards:

ANSI/ASME A112.18.1, CSA
B125.1, IAPMO/cUPC Listed, EPA
WaterSense Listed

Flow Rate:

Shower Head 1.8 gpm @ 60 psig
Hand shower 1.8 gpm @ 60 psig

Low Flow Alternative: Shower Head &
Hand Shower @ 1.5 gpm:

F284214TMB-15