

Specifications:

- ➔ Metal construction for durability and reliability
- ➔ Pressure balancing volume control with 3-way two handle diverting
- ➔ Max-temperature limit stop for added safety
- ➔ Integral stop check valves for easy maintenance
- ➔ Valve and trim packages are sold separately
- ➔ Requires the fluid F1003B pressure balancing valve, (sold separately and available with shut off or **sharing in solder, PEX and PEX-W.)

Components:

F1001TMB	Cartridge Sleeve
FP6028341MB	Wisdom Handle
FP801013MB	Diverter Sleeve
FP605652MB	Diverter Handle
FP6001142MB-3PB	Cover Plate
FP6018308MB	3" Ceiling Shower Arm
FP6002150MB	8" Shower Head
FP6016008MB	8" Shower Arm
FP6000350MB	6" Shower Head
FA802MB	Slide bar
FP40130MB	3 Function Hand Shower
FP6001007MB	60" Hose

**sharing available where allowed by code

Features:

- | | |
|---|---|
|  Requires F1003B |  Bubble Level |
|  Integral Stops |  Speed Connect |

Wisdom Tub, Double Shower Head & Hand Shower Trim Kit

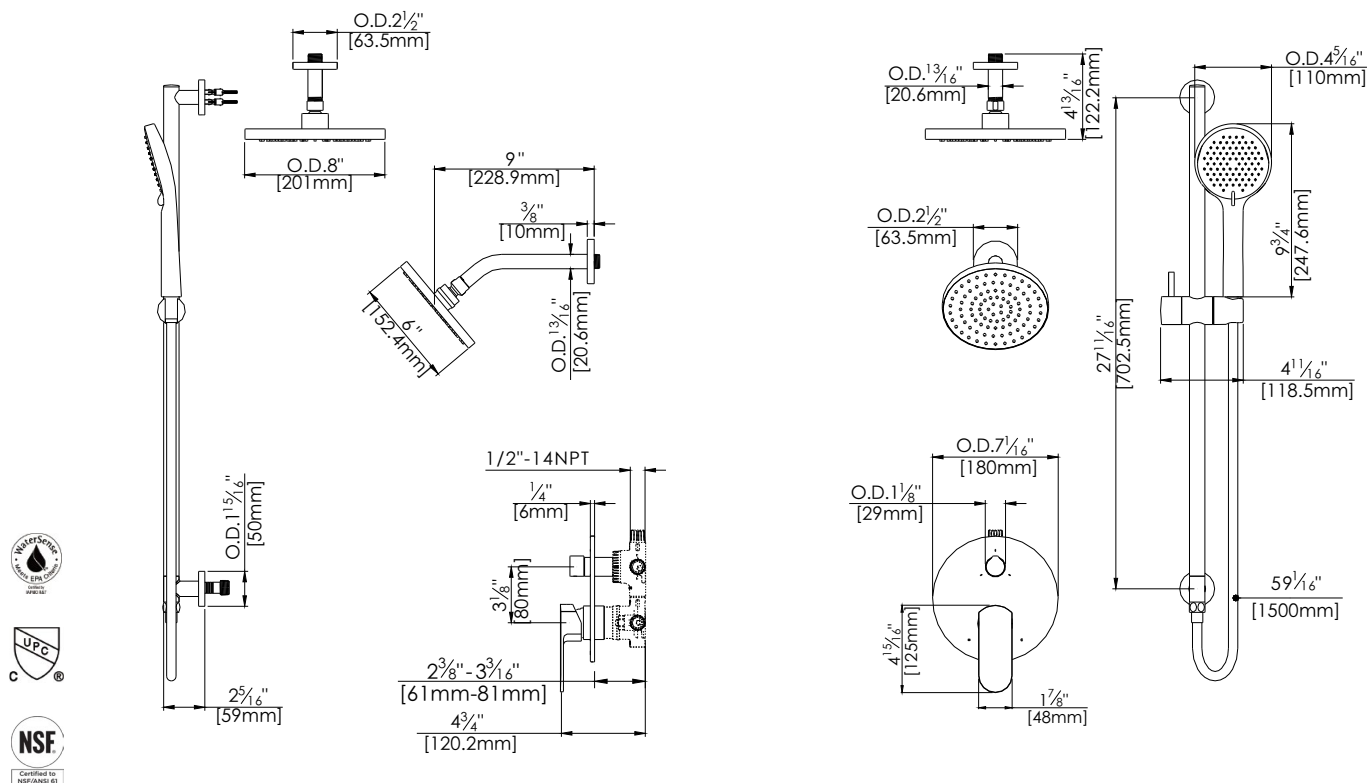
F283036TMB



Available in Matte Black

Technical Drawing

F283036TMB



Codes and Standards: ANSI/ASME A112.18.1, CSA B125.1, IAPMO / cUPC Listed, EPA Watersense Listed

Warranty:

Limited Lifetime Faucet Warranty against material and manufacturing defects for residential use.

2 Year Limited Warranty on all industrial, commercial and business applications.

Kit Variations:



Kit with alternate ADA diverter handle: **F283036TMB-AR**

Flow Rate:

8" Shower Head 1.8 gpm @ 60 psig
6" Shower Head 1.8 gpm @ 60 psig
Hand Shower 1.8 gpm @ 60 psig

Low Flow Alternative: Hand Shower & 6" Shower Head @ 1.5 gpm:
F283036TMB-15