

## Wisdom Tub Spout Trim Kit

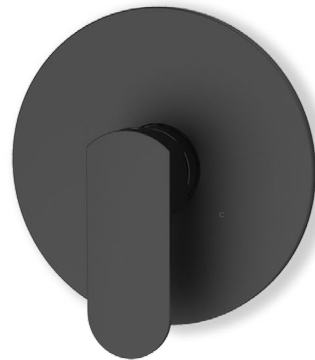
### F281207TMB

#### Specifications:

- Metal construction for durability and reliability
- Pressure balancing volume control (non-diverting)
- Max-temperature limit stop for added safety
- Integral stop check valves for easy maintenance
- Valve and trim packages are sold separately
- Requires the fluid F1001B pressure balancing valve, (sold separately and available with shut off in solder, PEX and PEX-W.)

#### Components:

F1001TMB ..... Cartridge Sleeve  
FP6028341MB ..... Wisdom Handle  
FP6001035-1PB ..... Cover Plate  
FP6098035L ..... Curved Tub Spout



#### Features:



Requires F1001B



Bubble Level



Integral Stops

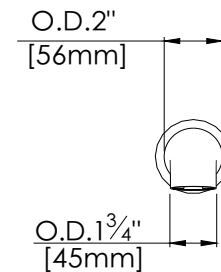
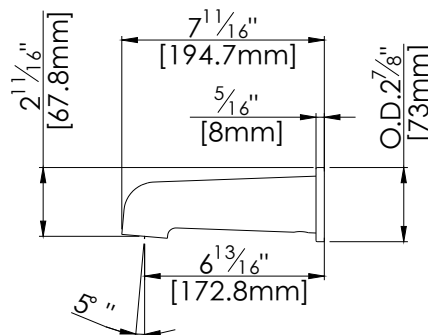
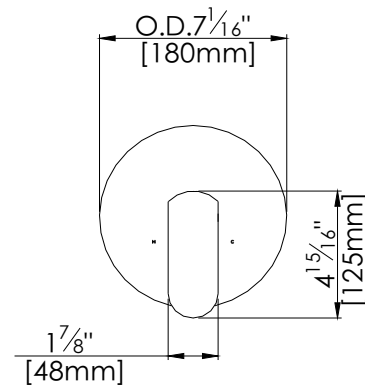
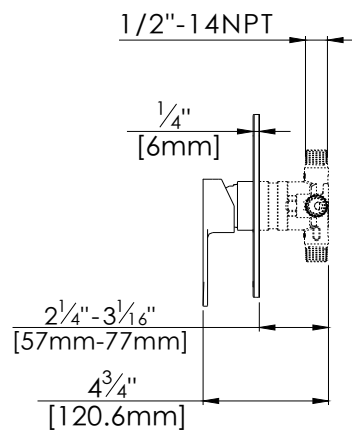


Slip Fit Connection

Available in Matte Black

## Technical Drawing

F281207TMB



## Warranty:

Limited Lifetime Faucet Warranty  
against material and manufacturing  
defects for residential use.

2 Year Limited Warranty on all industrial,  
commercial and business applications.

## Codes and Standards:

ANSI/ASME A112.18.1, CSA  
B125.1, IAPMO/cUPC Listed, EPA  
Watersense Listed

## Flow Rate:

Tub spout 4.5 gpm @ 60 psig