

Specifications:

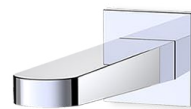
- Metal construction for durability and reliability
- Pressure balancing with volume control
- Maximum temperature limit stop for added safety
- Integral stop check valves for easy maintenance
- Valve and trim packages are sold separately
- Requires the fluid F1001B pressure balancing valve, (available in solder, PEX and PEX-W.)

Components:

F1001T	Cartridge Sleeve
FP6028341	Wisdom Handle
FP6001035-1PB	Cover Plate
FP6041034	Wisdom Tub Spout

Wisdom Tub Spout Trim Kit

F281248T



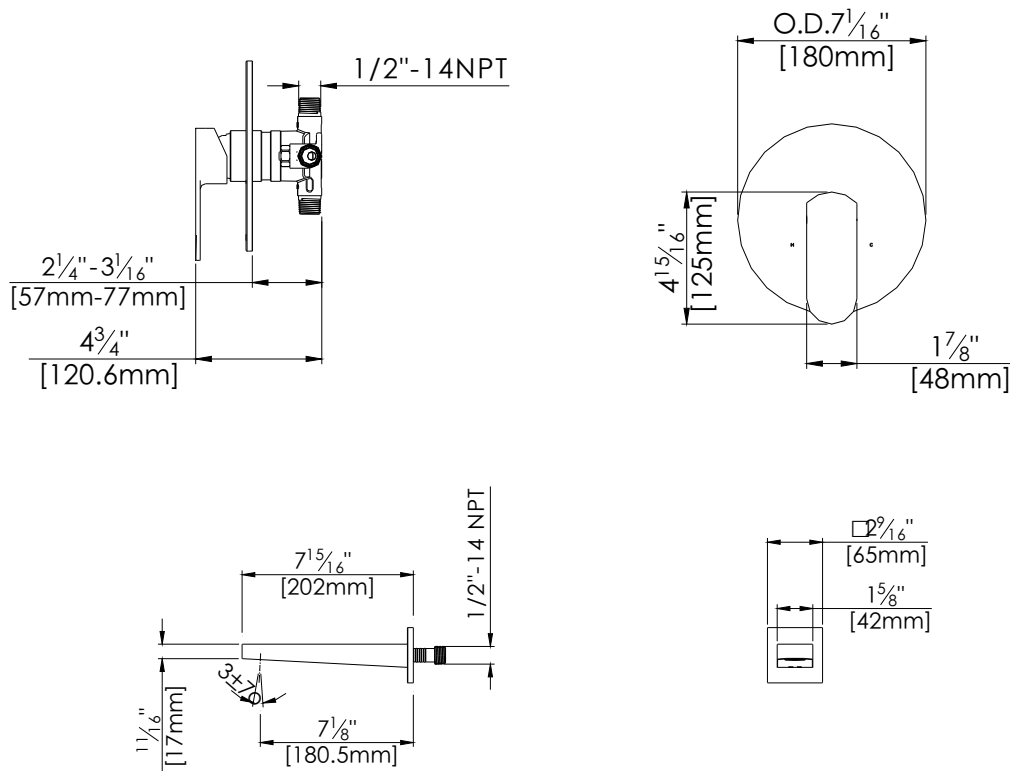
Features:

-  Requires F1001B
-  Bubble Level
-  Integral Stops
-  Speed Connect

Available in Polished Chrome (CP) and Brushed Nickel (BN)

Technical Drawing

F281248T

**Warranty:**

Limited Lifetime Faucet Warranty
against material and manufacturing
defects for residential use.

2 Year Limited Warranty on all industrial,
commercial and business applications.

Codes and Standards:

ANSI/ASME A112.18.1

CSA B125.1

IAPMO / cUPC Listed

Flow Rate:

Tub Spout 4.5 gpm @ 60 psig