

Specifications:

- ➔ Metal construction for durability and reliability
- ➔ Pressure balancing volume control with 2-way two handle diverting
- ➔ Max-temperature limit stop for added safety
- ➔ Integral stop check valves for easy maintenance
- ➔ Valve and trim packages are sold separately
- ➔ Requires the fluid F1012B pressure balancing valve, (sold separately and available with shut off in solder, PEX and PEX-W.)

Components:

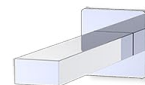
F1001T	Cartridge Sleeve
FP6023041	Oceanside/Vancouver Handle
FP801013	Diverter Sleeve
FP605752	Diverter Handle
FP6001143-2PB	Cover Plate
FP6027008	8" Shower Arm
FP6000150	6" Shower Head
FP6056034	Cubed Tub Spout

Features:

- | | |
|---|---|
|  Requires F1012B |  Bubble Level |
|  Integral Stops |  Speed Connect |

Oceanside/Vancouver Tub and 6" Shower Head Trim Kit

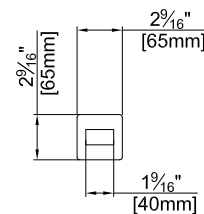
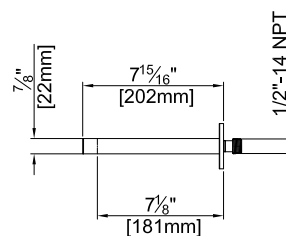
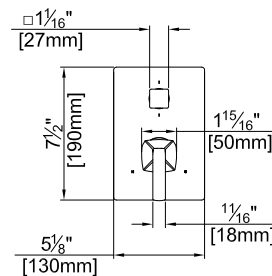
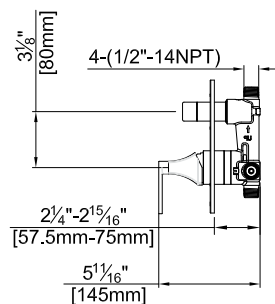
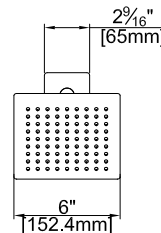
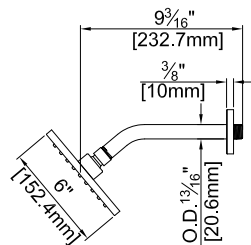
F232252T



Available in Polished Chrome (CP) and Brushed Nickel (BN)

Technical Drawing

F232252T



Codes and Standards: ANSI/ASME A112.18.1, CSA B125.1, IAPMO / cUPC Listed, EPA Watersense Listed

Warranty:

Limited Lifetime Faucet Warranty against material and manufacturing defects for residential use.

2 Year Limited Warranty on all industrial, commercial and business applications.

Kit Variations:



Kit with alternate ADA diverter handle: **F232252T-AS**

Flow Rate:

Shower Head 1.8 gpm @ 60 psig
Tub Spout 4.5 gpm @ 60 psig

Low Flow Alternative: Shower Head @ 1.5 gpm: **F232252T-15**