

## Yaletown Square 6" Shower Head & Hand Shower Trim Kit

F192261T

### Specifications:

- ➔ Metal construction for durability and reliability
- ➔ Pressure balancing volume control with 2-way two handle diverting
- ➔ Max-temperature limit stop for added safety
- ➔ Integral stop check valves for easy maintenance
- ➔ Valve and trim packages are sold separately
- ➔ Requires the fluid F1012B pressure balancing valve, (sold separately and available with shut off or sharing\*\* in solder, PEX and PEX-W.)

### Components:

F1001T.....	Cartridge Sleeve
FP6019041 .....	Yaletown Handle
FP801013.....	Diverter Sleeve
FP605752.....	Diverter Handle
FP6001143-2PB.....	Square Cover Plate
FP6007108.....	16" Shower Arm
FP6001050.....	8" Brass Shower Head
FP40120.....	3 Function Hand Shower
FA803.....	Slide Bar with Integral Outlet
FP6001006 .....	60" Shower Hose

\*\*sharing available where allowed by code

### Features:

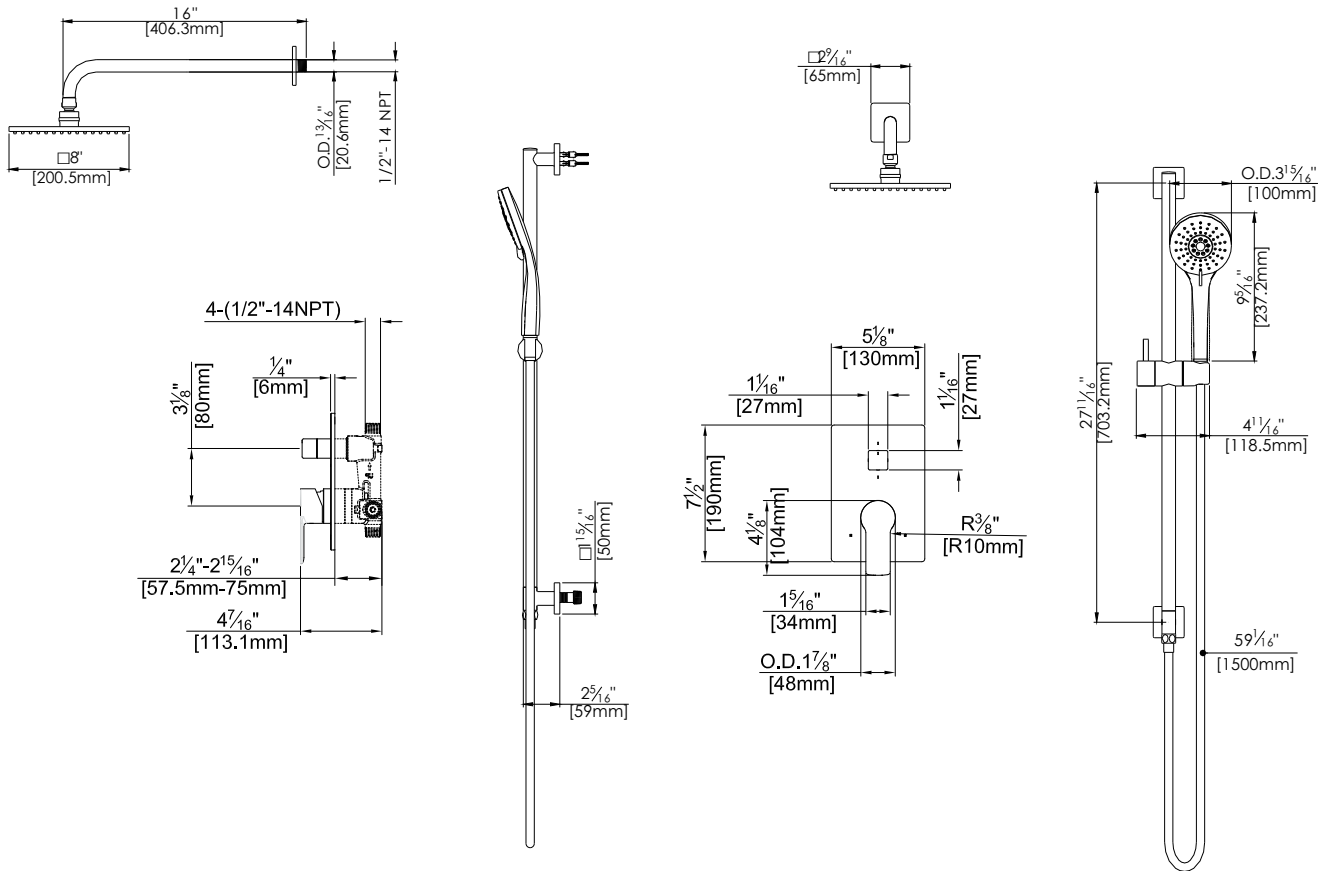
-  Requires F1012B
-  Bubble Level
-  Integral Stops
-  Speed Connect



Available in Polished Chrome (CP) and Brushed Nickel (BN)

## Technical Drawing

## F192261T



**Codes and Standards:** ANSI/ASME A112.18.1, CSA B125.1, IAPMO /cUPC Listed, EPA Watersense Listed

### Warranty:

Limited Lifetime Faucet Warranty against material and manufacturing defects for residential use.

2 Year Limited Warranty on all industrial, commercial and business applications.

### Kit Variations:



Kit with alternate ADA diverter handle: **F192261T-AS**

### Flow Rate:

Shower Head 1.8 gpm @ 60 psig  
Hand Shower 1.8 gpm @ 60 psig

Low Flow Alternative: Hand Shower @ 1.5 gpm: **F192261T-15**