

## Specifications:

- Metal construction for durability and reliability
- Pressure balancing volume control with 2-way two handle diverting
- Max-temperature limit stop for added safety
- Integral stop check valves for easy maintenance
- Valve and trim packages are sold separately
- Requires the fluid F1012B pressure balancing valve, (sold separately and available with shut off in solder, PEX and PEX-W.)

## Components:

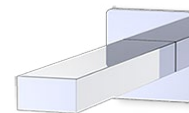
F1001T .....	Cartridge Sleeve
FP6019041 .....	Yaletown Handle
FP801013 .....	Diverter Sleeve
FP605752 .....	Diverter Handle
FP6001143-2PB .....	Cover Plate
FP6027008 .....	8" Shower Arm
FP6000150 .....	6" Shower Head
FP6056034 .....	Cubed Tub Spout

## Features:

-  Requires F1012B
-  Bubble Level
-  Integral Stops
-  Speed Connect

## Yaletown Square 6" Shower Head & Tub Spout Trim Kit

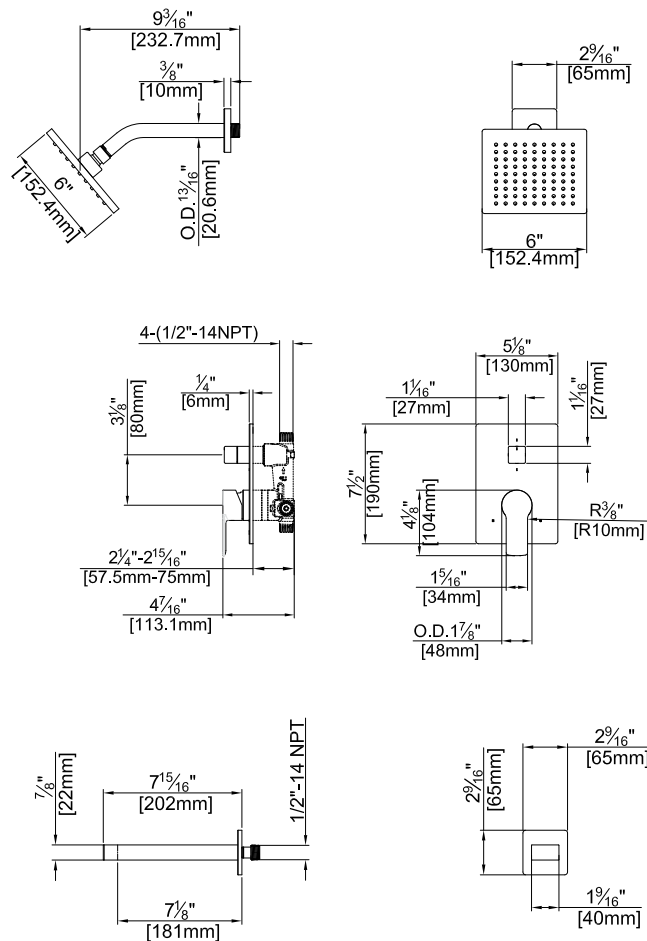
F192256T



Polished Chrome (CP), Brushed Nickel (BN) and Matte Black (MB)

## Technical Drawing

F192256T



**Codes and Standards:** ANSI/ASME A112.18.1, CSA B125.1, IAPMO / cUPC Listed, EPA Watersense Listed

### Warranty:

Limited Lifetime Faucet Warranty against material and manufacturing defects for residential use.

2 Year Limited Warranty on all industrial, commercial and business applications.

### Kit Variations:



Kit with alternate ADA diverter handle: **F192256T-AS**

### Flow Rate:

Shower Head 1.8 gpm @ 60 psig  
Tub Spout 4.5 gpm @ 60 psig

Low Flow Alternative: Shower Head @ 1.5 gpm: **F192256T-15**