

Specifications:

- Metal construction for durability and reliability
- Pressure balancing volume control (non-diverting)
- Max-temperature limit stop for added safety
- Integral stop check valves for easy maintenance
- Valve and trim packages are sold separately
- Requires the fluid F1001B pressure balancing valve, (sold separately and available with shut off in solder, PEX and PEX-W.)

Components:

F1001T	Cartridge Sleeve
FP6019041	Yaletown Handle
FP6001033-1PB	Cover Plate
FP6027008	8" Shower Arm
FP6000150	6" Shower Head

Yaletown Square 6" Shower Head Only Trim Kit

F191257T



Features:



Requires F1001B



Bubble Level

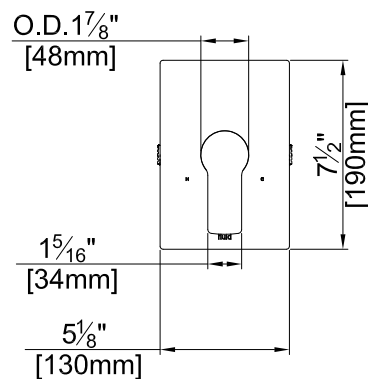
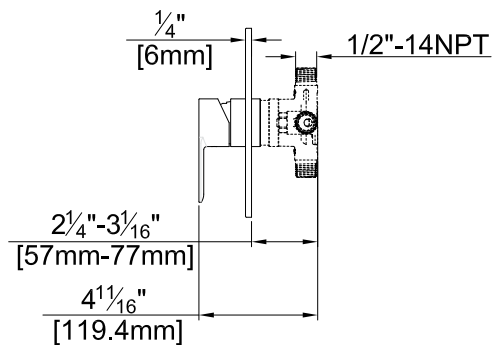
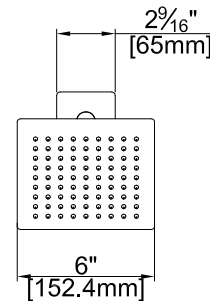
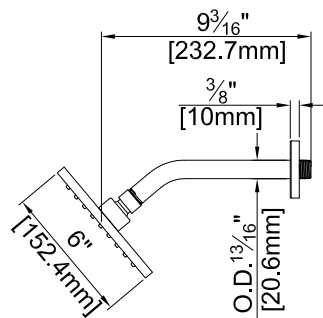


Integral Stops

Polished Chrome (CP), Brushed Nickel (BN) and Matte Black (MB)

Technical Drawing

F191257T



Warranty:

Limited Lifetime Faucet Warranty
against material and manufacturing
defects for residential use.

2 Year Limited Warranty on all industrial,
commercial and business applications.

Codes and Standards:

ANSI/ASME A112.18.1, CSA
B125.1, IAPMO / cUPC Listed, EPA
WaterSense Listed

Flow Rate:

Shower Head 1.8 gpm @ 60 psig

Low Flow Alternative: Shower Head @
1.5 gpm: **F191257T-15**