

Specifications:

- ➔ Metal construction for durability and reliability
- ➔ Pressure balancing volume control with 3-way two handle diverting
- ➔ Max-temperature limit stop for added safety
- ➔ Integral stop check valves for easy maintenance
- ➔ Valve and trim packages are sold separately
- ➔ Requires the fluid F1003B pressure balancing valve, (sold separately and available with shut off or **sharing in solder, PEX and PEX-W.)

Components:

| | |
|---------------------|-------------------|
| F1001T | Cartridge Sleeve |
| FP6024041 | Utopia Handle |
| FP801013 | Diverter Sleeve |
| FP605652 | Diverter Handle |
| FP6001142-3PB | Cover Plate |
| FP6016008 | 8" Shower Arm |
| FP6000350 | 6" Shower Head |
| FP6001048 | Round Hand Shower |
| FA105 | Slide Bar |
| FP6002047 | Wall Outlet |
| FP6001006 | 60" Shower Hose |
| FP6057034 | Pipe Tub Spout |

**sharing available where allowed by code

Features:

-  Requires F1003B
-  Bubble Level
-  Integral Stops
-  Speed Connect

Utopia Tub, 6" Shower Head & Hand Shower Trim Kit

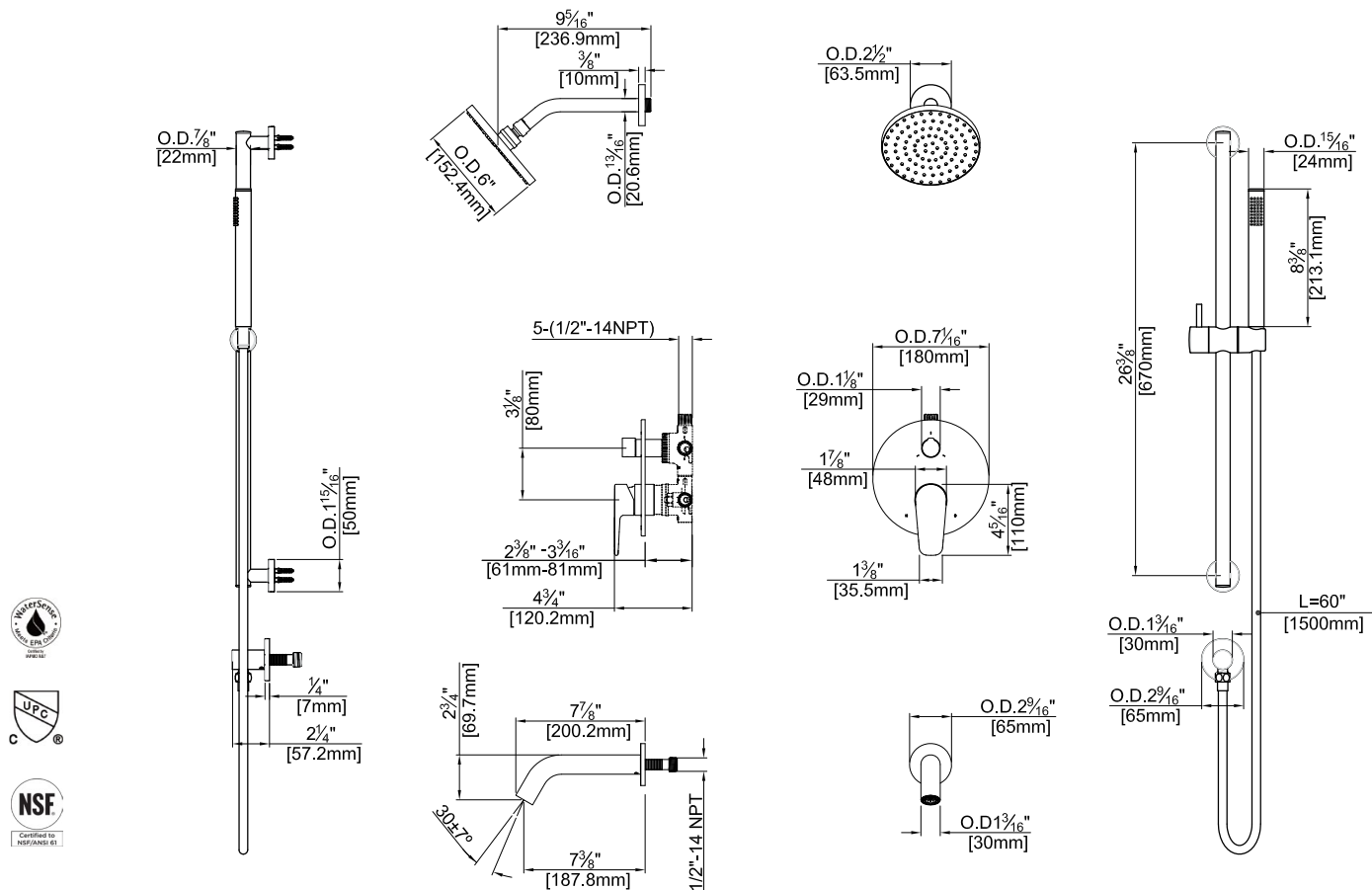
F183243T



Available in Polished Chrome (CP) and Brushed Nickel (BN)

Technical Drawing

F183243T



Codes and Standards: ANSI/ASME A112.18.1, CSA B125.1, IAPMO / cUPC Listed, EPA Watersense Listed

Warranty:

Limited Lifetime Faucet Warranty against material and manufacturing defects for residential use.

2 Year Limited Warranty on all industrial, commercial and business applications.

Kit Variations:



Kit with alternate ADA diverter handle: **F183243T-AR**

Flow Rate:

Shower Head 1.8 gpm @ 60 psig
Hand Shower 1.8 gpm @ 60 psig

Low Flow Alternative: Shower Head & Hand Shower @ 1.5 gpm: **F183243T-15**