

Specifications:

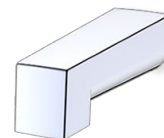
- Metal construction for durability and reliability
- Pressure balancing, single handle diverting and temperature control
- Max-temperature limit stop for added safety
- Integral stop check valves for easy maintenance
- Valve and trim packages are sold separately
- Requires the fluid F1002B pressure balancing valve, (sold separately and available in solder, PEX and PEX-W.)
- ADA Compliant

Components:





F1001T	Cartridge Sleeve
FP6016041	Quad Handle
FP6001033-2PS	Square Cover Plate
FP6000150	6" Square Shower Head
FP6027008	8" Shower Arm
FP6096035	Square Tub Spout

Quad Square Tub Spout & 6" Shower Trim Kit, (F1002B)

F164238T



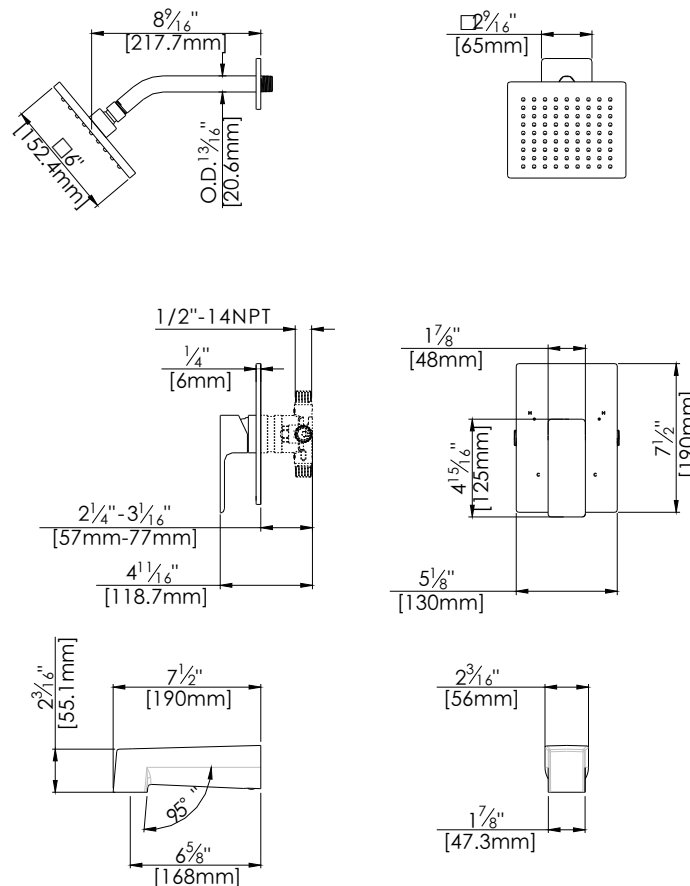
Features:

-  Requires F1002B
-  Bubble Level
-  Integral Stops
-  Slip Fit

Polished Chrome (CP), Brushed Nickel (BN) and Matte Black (MB)

Technical Drawing

F164238T

**Warranty:**

Limited Lifetime Faucet Warranty
against material and manufacturing
defects for residential use.

2 Year Limited Warranty on all industrial,
commercial and business applications.

Codes and Standards:

ANSI/ASME A112.18.1

CSA B125.1

IAPMO / cUPC Listed

EPA Watersense Listed

Flow Rate:

Shower Head 1.8 gpm @ 60 psig

Tub Spout 4.5 gpm @ 60 psig

Low Flow Alternative: Shower Head
@ 1.5 gpm: [F164238T-15](#)