

## Specifications:

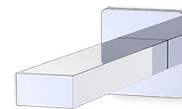
- Metal construction for durability and reliability
- Pressure balancing, single handle diverting and temperature control
- Maximum-temperature limit stop for added safety
- Integral stop check valves for easy maintenance
- Valve and trim packages are sold separately
- Requires the fluid F1002B pressure balancing valve, (sold separately and available in solder, PEX and PEX-W.)
- ADA Compliant

## Components:

|                     |                       |
|---------------------|-----------------------|
| F1001T .....        | Cartridge Sleeve      |
| FP6016041 .....     | Quad Handle           |
| FP6001033-2PS ..... | Square Cover Plate    |
| FP6000150 .....     | 6" Square Shower Head |
| FP6027008 .....     | 8" Shower Arm         |
| FP6056034 .....     | 8" Cubed Tub Spout    |

## Quad Cubed Tub Spout & 6" Shower Trim Kit

F164109T



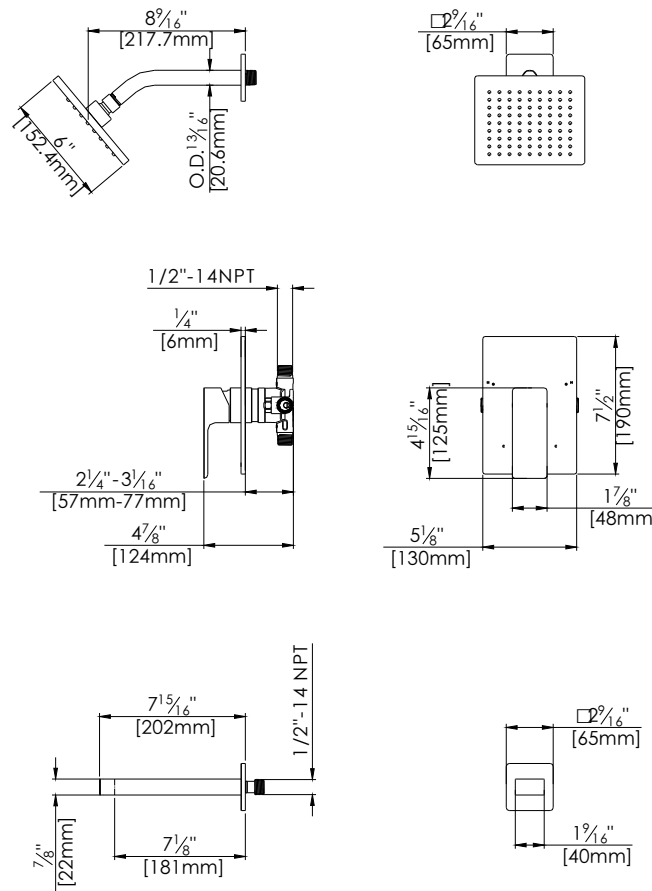
## Features:

-  Requires F1002B
-  Bubble Level
-  Integral Stops
-  Speed Connect

Polished Chrome (CP), Brushed Nickel (BN) and Matte Black (MB)

## Technical Drawing

F164109T



### Warranty:

Limited Lifetime Faucet Warranty against material and manufacturing defects for residential use.  
2 Year Limited Warranty on all industrial, commercial and business applications.

### Codes and Standards:

ANSI/ASME A112.18.1  
CSA B125.1  
IAPMO / cUPC Listed  
EPA Watersense Listed

### Flow Rate:

Shower Head 1.8 gpm @ 60 psig  
Tub Spout 4.5 gpm @ 60 psig  
Low Flow Alternative: Shower Head @ 1.5 gpm: [F164109T-15](#)