

## Specifications:

- Metal construction
- Pressure balancing volume control with 2-way, two handle diverting
- Maximum temperature limit stop for added safety
- Integral stop check valves for easy maintenance
- Valve and trim packages are sold separately
- Requires the fluid F1012B pressure balancing valve, (sold separately and available with shut off or \*\*sharing in solder, PEX and PEX-W.)

## Components:

F1001T .....	Sleeve Tube and Cap
FP6016041 .....	Quad Handle
FP801013 .....	Diverter Sleeve
FP605752 .....	Diverter Handle
FP6001143-2PB .....	Square Cover Plate
FP6027008 .....	8" Shower Arm
FP6000150 .....	6" Shower Head
FP40120 .....	3 Function Hand Shower*
FA803 .....	Slide Bar With Integral Outlet
FP6001006 .....	60" Shower Hose*

\*\*sharing available where allowed by code

Kit with Alternate Handle: **F162028T-AS**



## Features:

- Requires F1012B
- Bubble Level
- Integral Stops
- Speed Connect

## Quad 6" Shower Head & 3 Function Hand Shower Trim Kit

F162028T

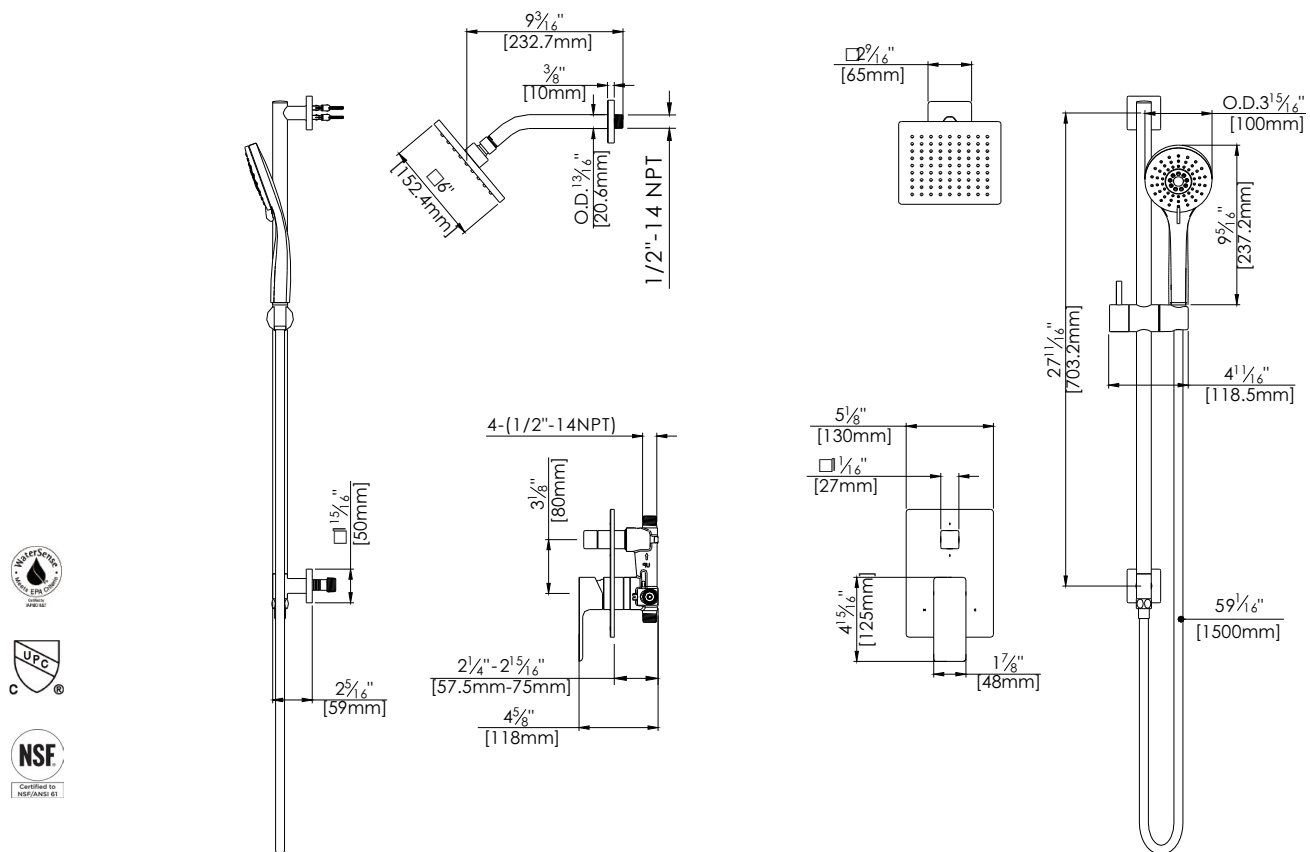


- \* Matte Black kits feature the FP6001007MB Shower Hose & FP40130MB 3-Function Hand Shower

Polished Chrome (CP), Brushed Nickel (BN) and Matte Black (MB)

## Technical Drawing

F162028T



## Warranty:

Limited Lifetime Faucet Warranty  
against material and manufacturing  
defects for residential use.

2 Year Limited Warranty on all industrial,  
commercial and business applications.

## Codes and Standards:

ANSI/ASME A112.18.1

CSA B125.1

IAPMO / cUPC Listed

## Flow Rate:

Shower Head 1.8 gpm @ 60 psig

Hand Shower 1.8 gpm @ 60 psig

Low Flow Alternative: Hand Shower &  
Shower Head @ 1.5 gpm: **F162028T-15**