

Specifications:

- Metal construction for durability and reliability
- Pressure balancing with 2-way single handle diverting and temperature control
- Maximum temperature limit stop for added safety
- Integral stop check valves for easy maintenance
- Valve and trim packages are sold separately
- Requires the fluid F1002B pressure balancing valve, (available in solder, PEX and PEX-W.)
- ADA compliant

Components:

F1001T	Sleeve Tube and Cap
FP6024041	Citi Handle
FP6001035-2PS	Round Cover Plate
FP20100	5 Function Shower Head
FP6016008	8" Shower Arm
FP6055035	Round Tub Spout

Citi Tub & 5 Function Shower Trim Kit, (Single Handle)

F244104T



Features:



Requires F1002B



Bubble Level



Integral Stops

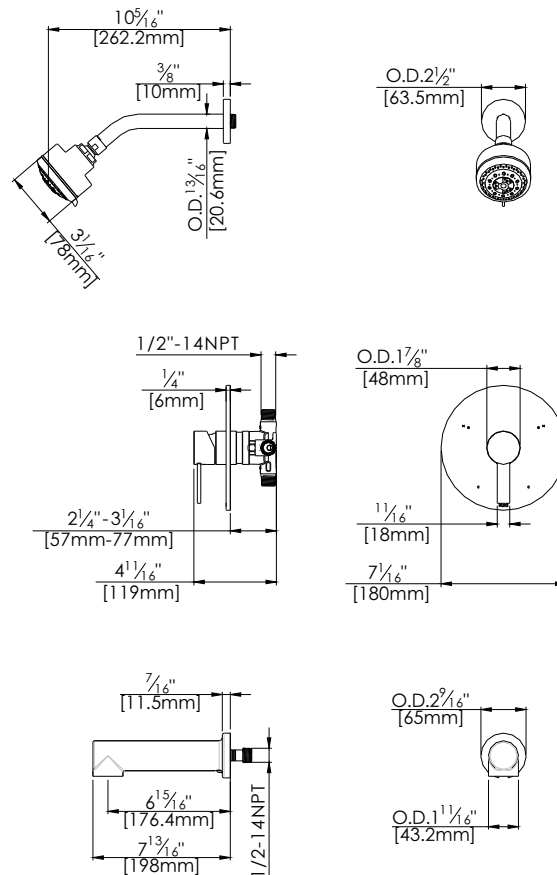


Speed Connect

Polished Chrome (CP), Brushed Nickel (BN) and Matte Black (MB)

Technical Drawing

F244104T



Codes and Standards: ANSI/ASME A112.18.1, CSA B125.1, IAPMO / cUPC Listed, EPA Watersense Listed

Warranty:

Limited Lifetime Faucet Warranty against material and manufacturing defects for residential use.

2 Year Limited Warranty on all industrial, commercial and business applications.

Kit Variations:

Kit with square style cover plate & diverter handle: **F244104T-S**

Flow Rate:

Shower Head 1.8 gpm @ 60 psig

Tub Spout 4.5 gpm @ 60 psig

Low Flow Alternative: Shower Head @ 1.5 gpm: **F244104T-15**