

## Specifications:

- Metal construction for durability and reliability
- Pressure balancing with 2-way single handle diverting and temperature control
- Maximum temperature limit stop for added safety
- Integral stop check valves for easy maintenance
- Valve and trim packages are sold separately
- Requires the fluid F1002B pressure balancing valve, (sold separately and available in solder, PEX and PEX-W.)
- ADA compliant

## Components:

F1001T .....	Cartridge Sleeve
FP6024041 .....	Citi Handle
FP6001035-2PS .....	Round Cover Plate
FP6016008 .....	8" Shower Arm
FP6000350 .....	6" Shower Head
FP6055035 .....	Round Tub Spout

## Citi Tub & 6" Shower Trim Kit (Single Handle)

F244102T



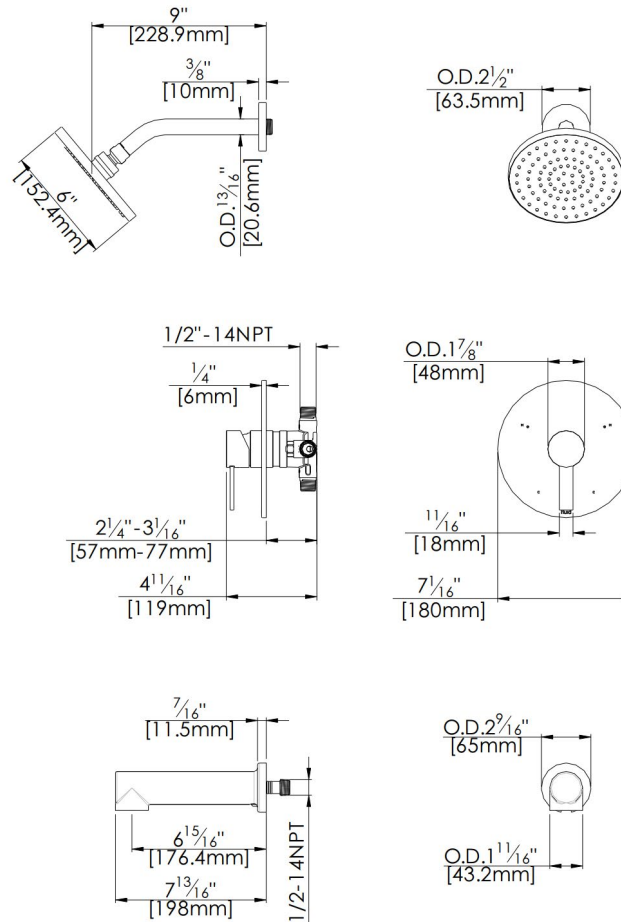
## Features:

-  Requires F1002b
-  Bubble Level
-  Integral Stops
-  Speed Connect

Polished Chrome (CP), Brushed Nickel (BN) and Matte Black (MB)

## Technical Drawing

F244102T



**Codes and Standards:** ANSI/ASME A112.18.1, CSA B125.1, IAPMO / cUPC Listed, EPA Watersense Listed

### Warranty:

Limited Lifetime Faucet Warranty against material and manufacturing defects for residential use.

2 Year Limited Warranty on all industrial, commercial and business applications.

### Kit Variations:

Kit with square style cover plate & diverter handle: **F244102T-S**

### Flow Rate:

Shower Head 1.8 gpm @ 60 psig

Tub Spout 4.5 gpm @ 60 psig

Low Flow Alternative: Shower Head @ 1.5 gpm: **F244102T-15**