

## Citi Double Shower Head and 3 Function Hand Shower Trim Kit

F243036T

### Specifications:

- ➔ Metal construction for durability and reliability
- ➔ Pressure balancing volume control with 3-way two handle diverting
- ➔ Max-temperature limit stop for added safety
- ➔ Integral stop check valves for easy maintenance
- ➔ Valve and trim packages are sold separately
- ➔ Requires the fluid F1003B pressure balancing valve, (sold separately and available with shut off or \*\*sharing in solder, PEX and PEX-W.)

### Components:

F1001T .....	Cartridge Sleeve
FP6024041 .....	Citi Handle
FP801013 .....	Diverter Sleeve
FP605752 .....	Diverter Handle
FP6001143-3PB .....	Round Cover Plate
FP6018308 .....	3" Ceiling Shower Arm
FP6002050 .....	8" Shower Head*
FP6016008 .....	8" Shower Arm
FP6000350 .....	6" Shower Head
FP6001006 .....	60" Shower Hose*
FA802 .....	Slide Bar With Integral Outlet
FP40120 .....	3 Function Hand Shower*

\* Matte black version features the FP6001007MB Hose, FP6002150MB 8" Shower Head & FP40130MB Hand Shower

\*\*sharing available where allowed by code



### Features:

-  Requires F1003B
-  Bubble Level
-  Integral Stops
-  Speed Connect

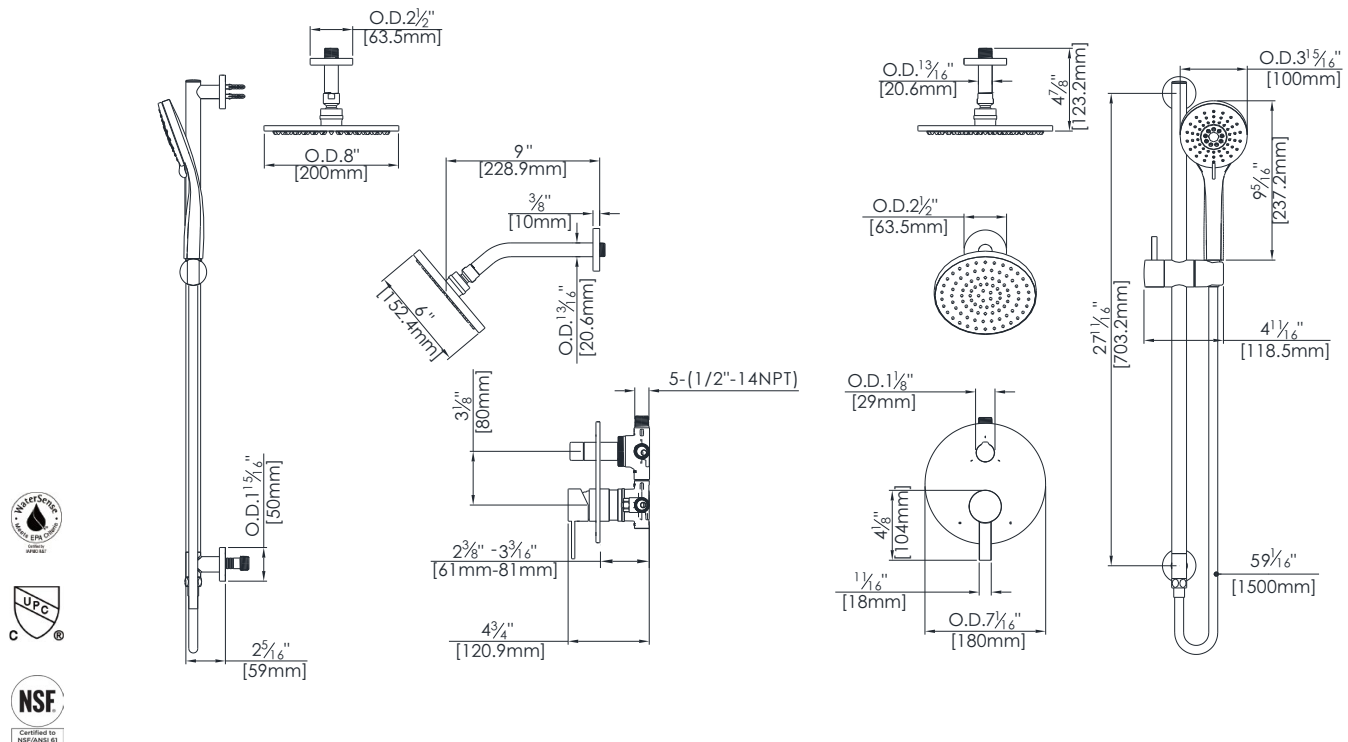
Polished Chrome (CP), Brushed Nickel (BN) and Matte Black (MB)

Kit with Alternate Handle: **F243036T-AR**



## Technical Drawing

F243036T



**Codes and Standards:** ANSI/ASME A112.18.1, CSA B125.1, IAPMO / cUPC Listed, EPA Watersense Listed

## Warranty:

Limited Lifetime Faucet Warranty against material and manufacturing defects for residential use.

2 Year Limited Warranty on all industrial, commercial and business applications.

## Kit Variations:

Kit with ADA diverter handle:  
**F243036T-AR**

Kit with square style cover plate & diverter handle: **F243036T-S**

## Flow Rate:

Shower Heads 1.8 gpm @ 60 psig  
Hand Shower 1.8 gpm @ 60 psig

Low Flow Alternative: 6" Shower Head & Hand Shower @ 1.5 gpm: **F243026T-15**