

Specifications:

- Metal construction for durability and reliability
- Pressure balancing volume control
- Max-temperature limit stop for added safety
- Integral stop check valves for easy maintenance
- Valve and trim packages are sold separately
- Requires the fluid F1001B pressure balancing valve, (sold separately and available in solder, PEX and PEX-W.)
- ADA compliant

Components:

F1001T	Cartridge Sleeve
FP6024041	Citi Handle
FP6001035-1PB	Cover Plate
FP6002050	8" Brass Shower Head*
FP6006008	16" Shower Arm

* Matte black uses an ABS FP6002150MB Rain Shower Head instead

Citi 8" Round Rain Shower Only Trim Kit

F241097T



Features:



Requires F1001B



Bubble Level

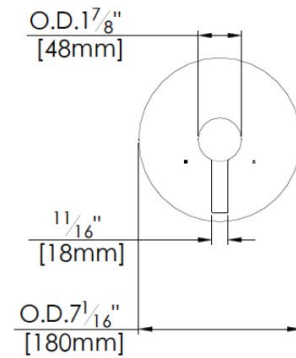
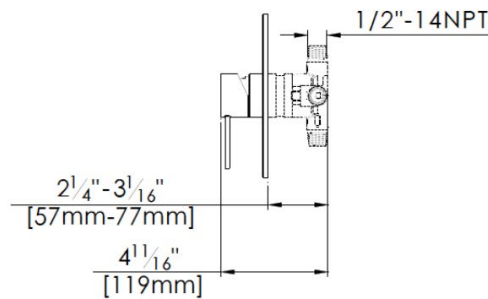
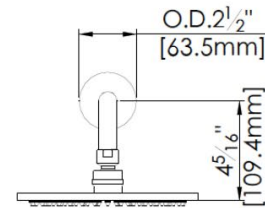
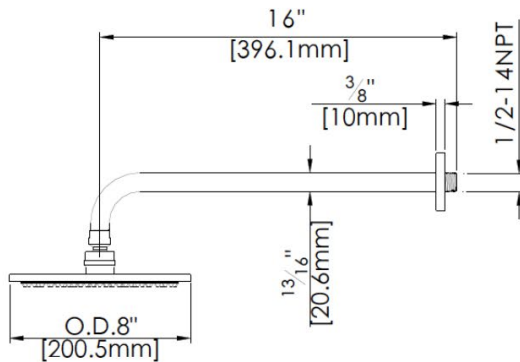


Integral Stops

Polished Chrome (CP), Brushed Nickel (BN) and Matte Black (MB)

Technical Drawing

F241097T



Codes and Standards: ANSI/ASME A112.18.1, CSA B125.1, IAPMO / cUPC Listed, EPA Watersense Listed

Warranty:

Limited Lifetime Faucet Warranty against material and manufacturing defects for residential use.

2 Year Limited Warranty on all industrial, commercial and business applications.

Kit Variations:

Kit with square style cover plate & diverter handle: **F241097T-S**

Flow Rate:

Shower Head 1.8 gpm @ 60 psig