

Specifications:

- Metal construction for durability and reliability
- Pressure balancing volume control
- Maximum temperature limit stop for added safety
- Integral stop check valves for easy maintenance
- Valve and trim packages are sold separately
- Requires the fluid F1001B pressure balancing valve, (sold separately and available in solder, PEX and PEX-W.)
- ADA compliant

Components:

F1001T	Cartridge Sleeve
FP6024041	Citi Handle
FP6001035-1PB	Round Cover Plate
FP20100	5 Function Shower Head
FP6016008	8" Shower Arm

Citi 5 Function Shower Head Trim Kit

F241006T



Features:



Requires F1001B



Bubble Level

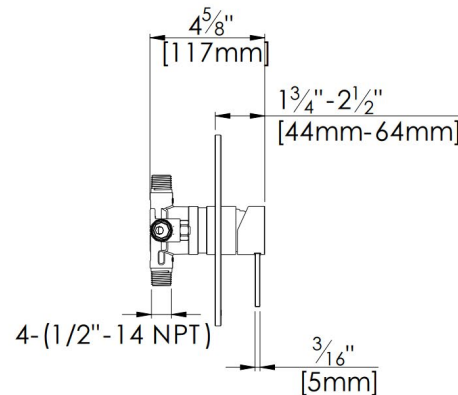
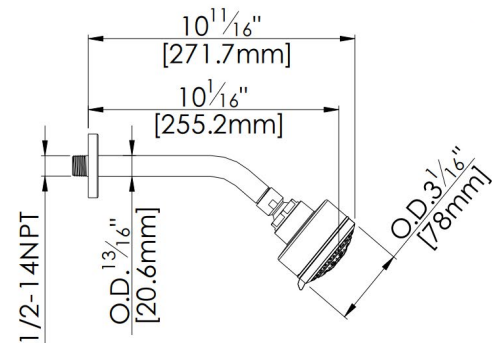
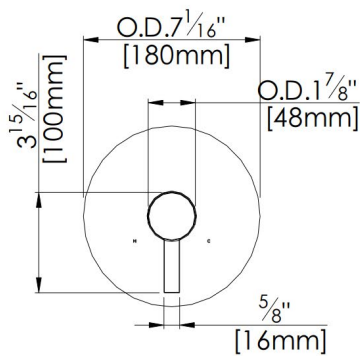
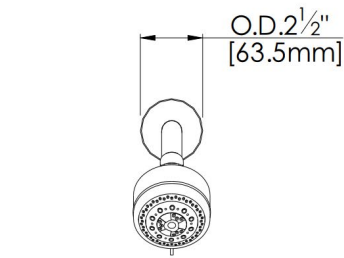


Integral Stops

Polished Chrome (CP), Brushed Nickel (BN) and Matte Black (MB)

Technical Drawing

F241006T



Codes and Standards: ANSI/ASME A112.18.1, CSA B125.1, IAPMO / cUPC Listed, EPA Watersense Listed

Warranty:

Limited Lifetime Faucet Warranty
against material and manufacturing
defects for residential use.

2 Year Limited Warranty on all industrial,
commercial and business applications.

Kit Variations:

Kit with square style cover plate &
diverter handle: **F241006T-S**

Flow Rate:

Shower Head 1.8 gpm @ 60 psig

Low Flow Alternative: Shower Head
@ 1.5 gpm: **F241006T-15**

F241006T October 2023

fluid by **Sustainable Solutions**

8395 Riverbend Court, Burnaby, BC
V3N 5E7, Canada