

## Specifications:

- ➔ Metal construction for durability and reliability
- ➔ Pressure balancing with 2-way, single handle diverting and temperature control
- ➔ Max-temperature limit stop for added safety
- ➔ Integral stop check valves for easy maintenance
- ➔ Valve and trim packages are sold separately
- ➔ Requires the fluid F1002B pressure balancing valve, (sold separately and available in solder, PEX and PEX-W.)

## Components:

F1001T .....	Sleeve tube and cap
FP6018041 .....	Utopia Handle
FP6001035-2PS .....	Round Cover Plate
FP6016008 .....	8" Shower Arm
FP6000350 .....	6" Shower Head
FP40120 .....	3 Function Hand Shower
FA101 .....	Slide Bar
FP6082048 .....	Wall Outlet
FP6001006 .....	60" Shower Hose

## Features:



Requires F1002B



Bubble Level



Integral Stops

## Utopia 6" Shower Head & 3 Function Hand Shower Trim Kit

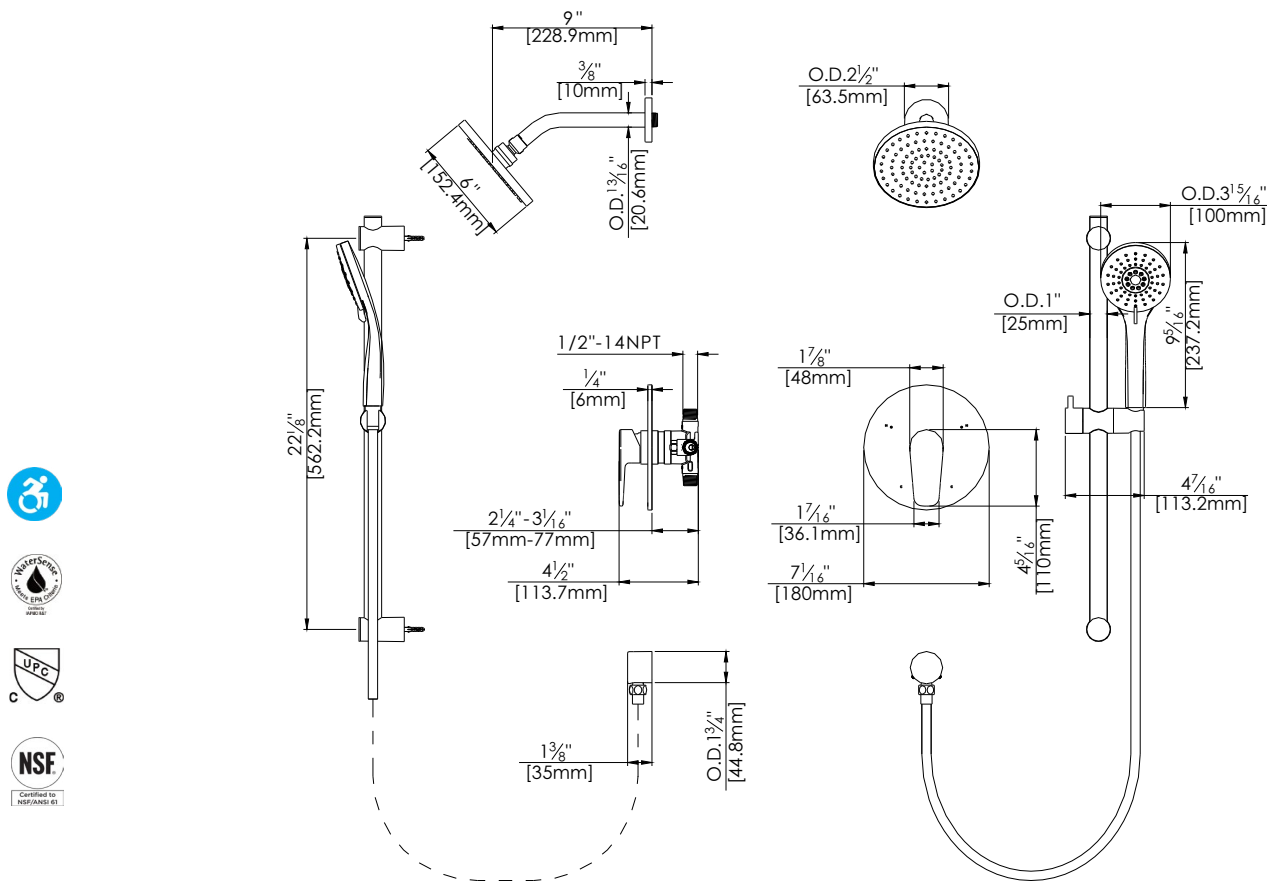
F184105T



Available in Polished Chrome (CP) and Brushed Nickel (BN)

## Technical Drawing

F184105T



## Warranty:

Limited Lifetime Faucet Warranty  
against material and manufacturing  
defects for residential use.

2 Year Limited Warranty on all industrial,  
commercial and business applications.

## Codes and Standards:

ANSI/ASME A112.18.1

CSA B125.1

IAPMO / cUPC Listed

## Flow Rate:

Shower Head 1.8 gpm @ 60 psig

Hand Shower 1.8 gpm @ 60 psig

Low Flow Alternative: Shower Head &  
Hand Shower @ 1.5 gpm: **F184105T-15**