

Utopia Tub & 5 Function Shower Trim, (Two handle)

F182305T

Specifications:

- Metal construction for durability and reliability
- Pressure balancing volume control with 2-way diverter with shut off or sharing
- Max-temperature limit stop for added safety
- Integral stop check valves for easy maintenance
- Valve and trim packages are sold separately
- Requires the fluid F1012B pressure balancing valve, (sold separately and available with shut off in solder, PEX and PEX-W.)

Components:

F1001T	Sleeve Tube and Cap
FP6018041	Utopia Handle
FP801013	Diverter Sleeve
FP605652	Diverter Handle
FP6001142-2PB	Round Cover Plate
FP20100	5 Function Shower Head
FP6016008	8" Shower Arm
FP6031034	Utopia Tub Spout

Kit with Alternate Handle: **F182305T-AR**



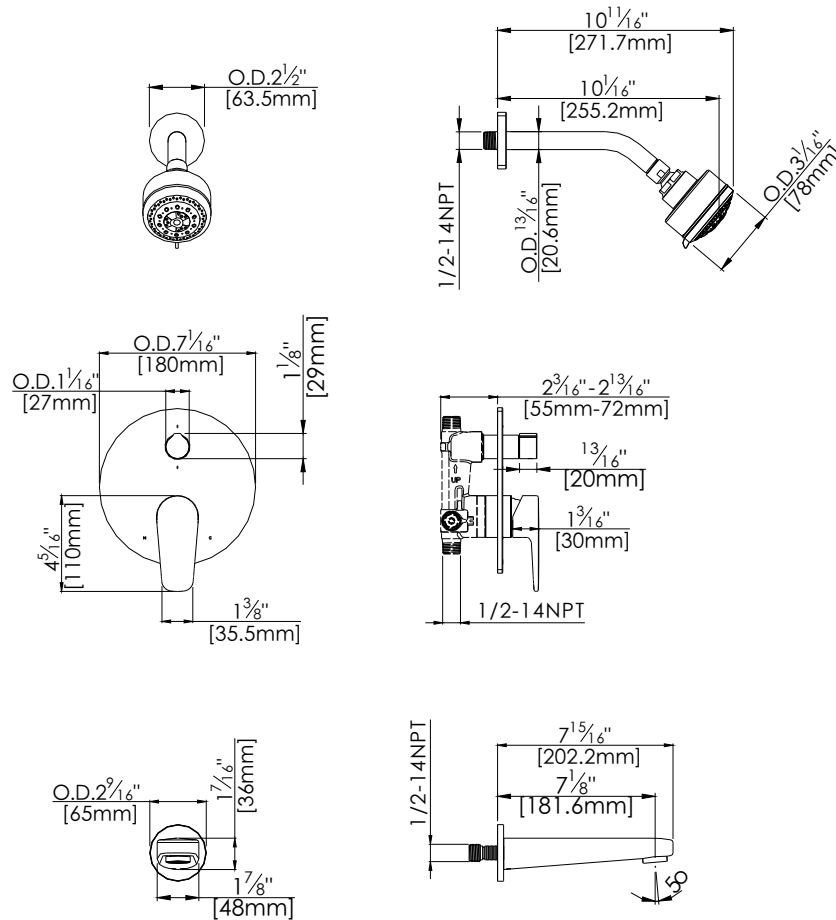
Features:

-  Requires F1012B
-  Bubble Level
-  Integral Stops
-  Speed Connect

Available in Polished Chrome (CP) and Brushed Nickel (BN)

Technical Drawing

F182305T



Warranty:

Limited Lifetime Faucet Warranty against material and manufacturing defects for residential use.

2 Year Limited Warranty on all industrial, commercial and business applications.

Codes and Standards:

ANSI/ASME A112.18.1

CSA B125.1

IAPMO / cUPC Listed

Flow Rate:

Shower Head 1.8 gpm @ 60 psig

Tube Spout 4.5 gpm @ 60 psig

Low Flow Alternative: Shower Head @ 1.5 gpm: **F182305T-15**