

## Utopia 6" Shower Head & Hand Shower Wand Trim Kit

F182201T

### Specifications:

- Metal construction for durability and reliability
- Pressure balancing volume control with 2-way diverter with shut off or sharing
- Max-temperature limit stop for added safety
- Integral stop check valves for easy maintenance
- Valve and trim packages are sold separately
- Requires the fluid F1012B pressure balancing valve, (sold separately and available with shut off or \*\*sharing in solder, PEX and PEX-W.)

### Components:

F1001T .....	Sleeve Tube and Cap
FP801013 .....	Diverter Sleeve
FP6001142-2PB .....	Round Cover Plate
FP605652 .....	Round Diverter Handle
FP6018041 .....	Utopia Handle
FP6016008 .....	8" Shower Arm
FP6000350 .....	6" Round Showerhead
FP6001048 .....	Round Hand Shower
FP6001010 .....	Hand Shower Holder
FP6002047 .....	Brass Wall Outlet
FP6001006 .....	60" Shower Hose

\*\*sharing available where allowed by code

Kit with Alternate Handle: **F182201T-AR**



### Features:

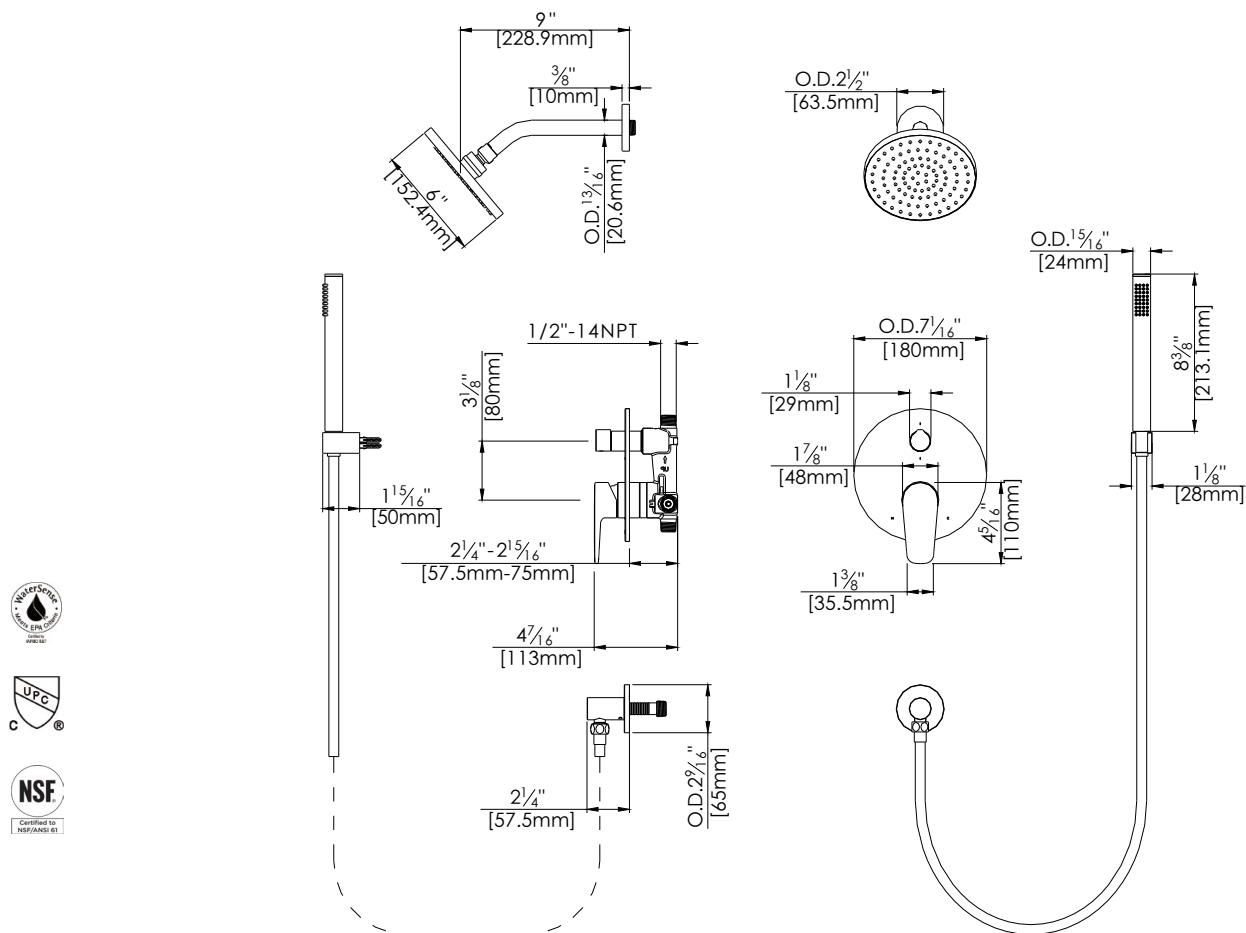
- Requires F1012B
- Bubble Level
- Integral Stops
- Speed Connect



Available in Polished Chrome (CP) and Brushed Nickel (BN)

## Technical Drawing

F182201T



## Warranty:

Limited Lifetime Faucet Warranty  
against material and manufacturing  
defects for residential use.

2 Year Limited Warranty on all industrial,  
commercial and business applications.

## Codes and Standards:

ANSI/ASME A112.18.1

CSA B125.1

IAPMO / cUPC Listed

## Flow Rate:

Shower Head 1.8 gpm @ 60 psig

Hand Shower 1.8 gpm @ 60 psig

Low Flow Alternative: Hand Shower  
@ 1.5 gpm: **F182201T-15**