

## Utopia Tub & Hand Shower Trim Kit with FA802 Slide Bar

F182074T

### Specifications:

- Metal construction for durability and reliability
- Pressure balancing volume control with 2-way, two handle diverting
- Max-temperature limit stop for added safety
- Integral stop check valves for easy maintenance
- Valve and trim packages are sold separately
- Requires the fluid F1012B pressure balancing valve, (sold separately and available with shut off in solder, PEX and PEX-W.)

### Components:

F1001T .....	Sleeve tube and cap
FP6018041 .....	Utopia Handle
FP801013 .....	Diverter Sleeve
FP605652 .....	Diverter Handle
FP6001142-2PB .....	Round Cover Plate
FP40120 .....	3 Function Hand Shower*
FA802 .....	Slide Bar with Integral Outlet
FP6001006 .....	60" Shower Hose
FP6057034 .....	Pipe Tub Spout

Kit with Alternate Handle: **F182074T-AR**



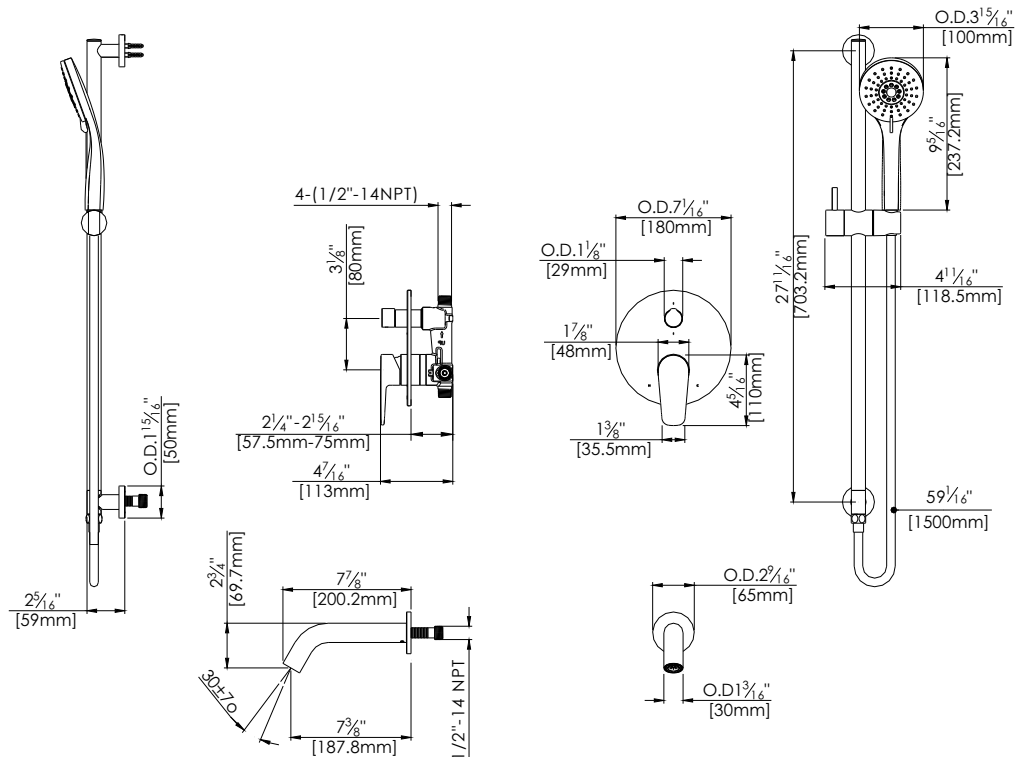
### Features:

-  Requires F1012B
-  Bubble Level
-  Integral Stops
-  Speed Connect

Available in Polished Chrome (CP) and Brushed Nickel (BN)

## Technical Drawing

F182074T



## Warranty:

Limited Lifetime Faucet Warranty  
against material and manufacturing  
defects for residential use.

2 Year Limited Warranty on all industrial,  
commercial and business applications.

## Codes and Standards:

ANSI/ASME A112.18.1

CSA B125.1

IAPMO / cUPC Listed

## Flow Rate:

Shower Head 1.8 gpm @ 60 psig

Tub Spout 4.5 gpm @ 60 psig

Low Flow Alternative: Hand Shower  
@ 1.5 gpm: **F182074T-15**