

Utopia 8" Rain Shower Head & Hand Shower Trim Kit

F182025T

Specifications:

- ➔ Metal construction for durability and reliability
- ➔ Pressure balancing volume control with 2-way, two handle diverting
- ➔ Max-temperature limit stop for added safety
- ➔ Integral stop check valves for easy maintenance
- ➔ Valve and trim packages are sold separately
- ➔ Requires the fluid F1012B pressure balancing valve, (sold separately and available with shut off or ****sharing** in solder, PEX and PEX-W.)

Components:

F1001T	Sleeve tube and cap
FP6018041	Utopia Handle
FP801013	Diverter Sleeve
FP605652	Diverter Handle
FP6001142-2PB	Round Cover Plate
FP605652	Diverter Handle
FP6006008	16" Shower Arm
FP6002050	8" Brass Rain Showerhead
FP40120	3 Function Hand Shower
FA802	Slide Bar with Integral Outlet
FP6001006	60" Shower Hose

****sharing** available where allowed by code

Kit with Alternate Handle: **F182025T-AR**



Features:

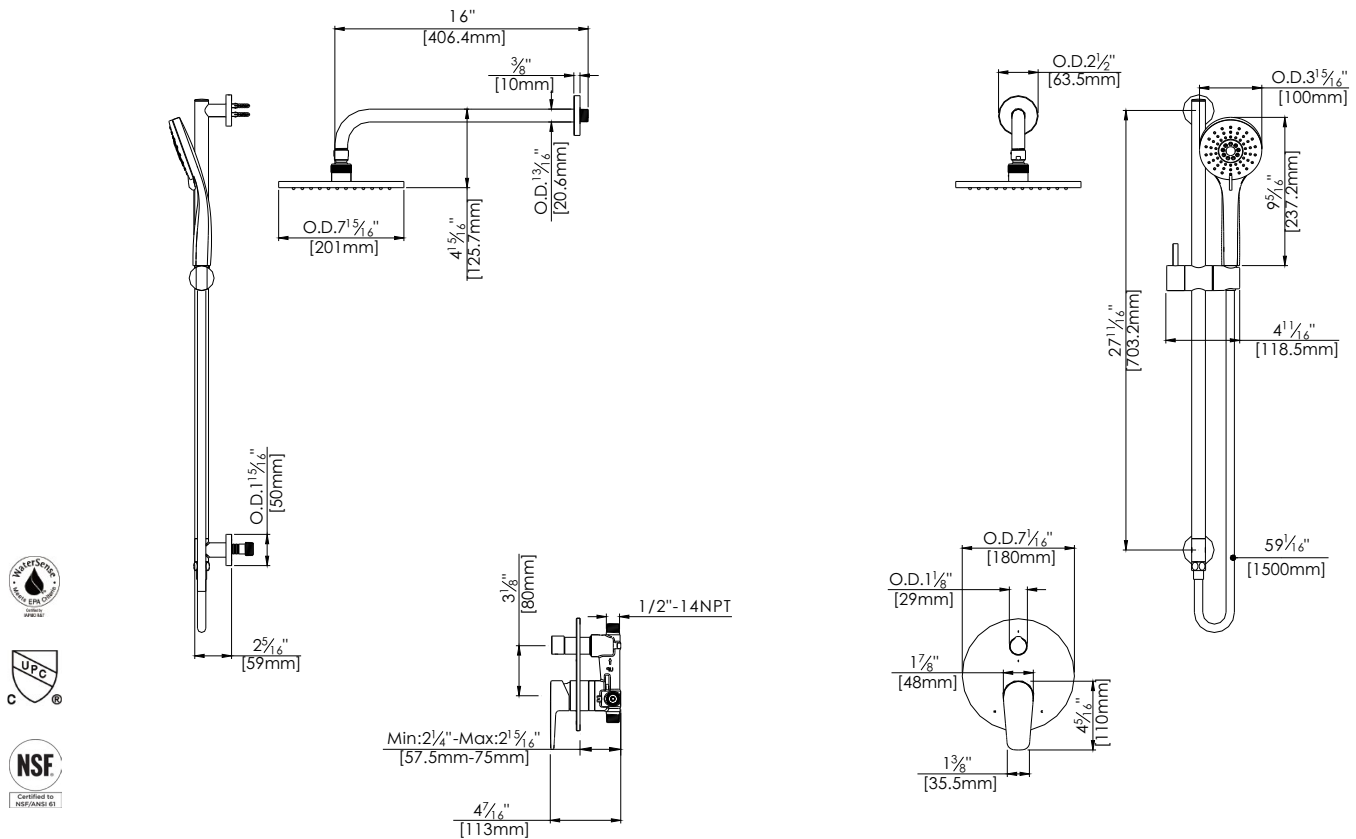
-  Requires F1012B
-  Bubble Level
-  Integral Stops
-  Speed Connect

Available in Polished Chrome (CP) and Brushed Nickel (BN)



Technical Drawing

F182025T



Warranty:

Limited Lifetime Faucet Warranty against material and manufacturing defects for residential use.

2 Year Limited Warranty on all industrial, commercial and business applications.

Codes and Standards:

ANSI/ASME A112.18.1

CSA B125.1

IAPMO / cUPC Listed

Flow Rate:

Shower Head 1.8 gpm @ 60 psig

Hand Shower 1.8 gpm @ 60 psig

Low Flow Alternative: Hand Shower @ 1.5 gpm: **F182025T-15**