

Utopia 4" Eco Shower Head & Hand Shower Trim Kit

F182012T

Specifications:

- Metal construction for durability and reliability
- Pressure balancing volume control with 2-way two handle diverting
- Max-temperature limit stop for added safety
- Integral stop check valves for easy maintenance
- Valve and trim packages are sold separately
- Requires the fluid F1012B pressure balancing valve, (sold separately and available with shut off or **sharing in solder, PEX and PEX-W.)

Components:

F1001T	Sleeve tube and cap
FP6018041	Utopia Handle
FP801013	Diverter Sleeve
FP605652	Diverter Handle
FP6001142-2PB	Cover Plate
FP6016008	8" Shower Arm
FP10200	4" Eco Shower Head
FP6016008	8" Shower Arm
FP6001048	Round Hand Shower
FA105	Slide Bar
FP6002047	Wall Outlet
FP6001006	60" Shower Hose

**sharing available where allowed by code

Kit with Alternate Handle: **F182012T-AR**



Features:

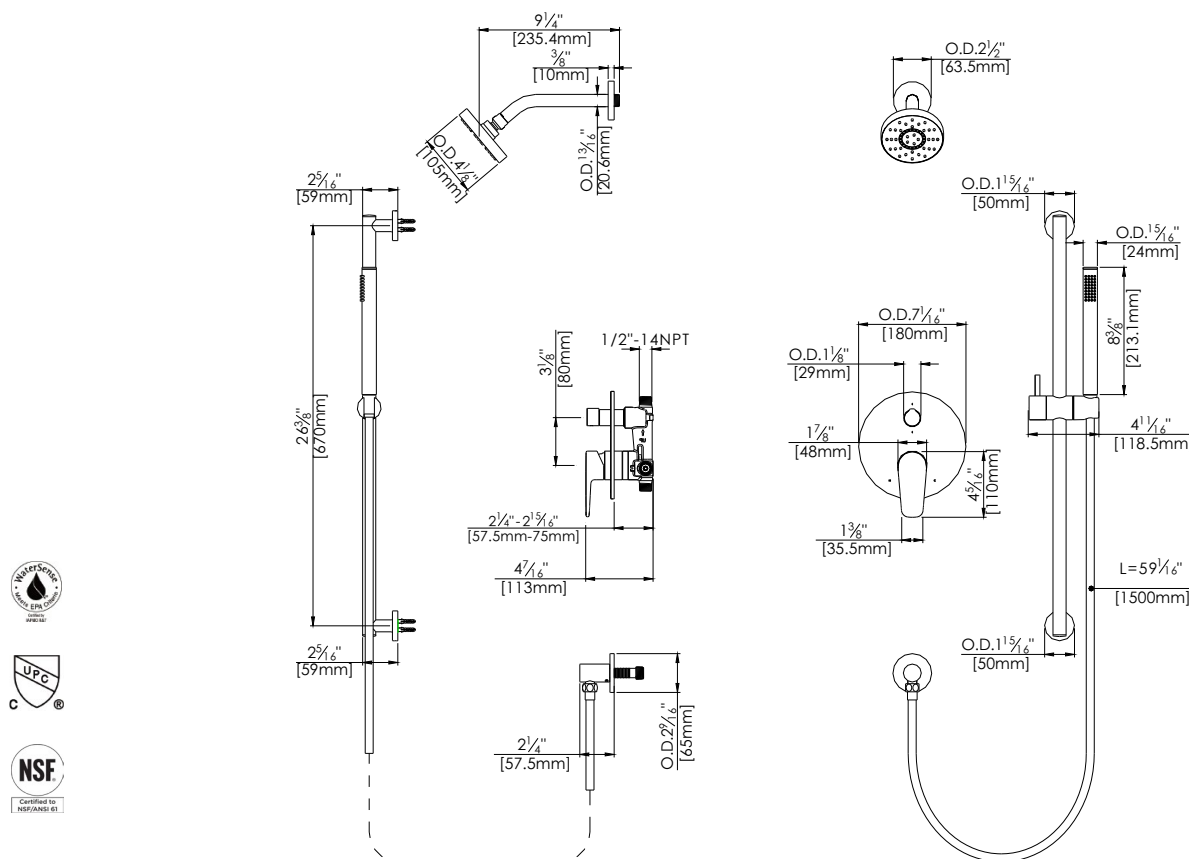
- Requires F1012B
- Bubble Level
- Integral Stops
- Speed Connect



Available in Polished Chrome (CP) and Brushed Nickel (BN)

Technical Drawing

F182012T



Warranty:

Limited Lifetime Faucet Warranty
against material and manufacturing
defects for residential use.

2 Year Limited Warranty on all industrial,
commercial and business applications.

Codes and Standards:

ANSI/ASME A112.18.1

CSA B125.1

IAPMO / cUPC Listed

Flow Rate:

Shower Head 1.5 gpm @ 60 psig

Hand Shower 1.8 gpm @ 60 psig

Low Flow Alternative: Hand Shower
@ 1.5 gpm: **F182012T-15**