

## Specifications:

- Metal construction for durability and reliability
- Pressure balancing volume control
- Max-temperature limit stop for added safety
- Integral stop check valves for easy maintenance
- Valve and trim packages are sold separately
- Requires the fluid F1001B pressure balancing valve, (sold separately and available in solder, PEX and PEX-W.)

## Components:

F1001T .....	Sleeve tube and cap
FP6018041 .....	Utopia Handle
FP6001035-1PB .....	Cover Plate
FP6000350 .....	6" Shower Head
FP6016008 .....	8" Shower Arm

## Utopia 6" Round Rain Shower Only Trim Kit

F181037T



## Features:



Requires F1001B



Bubble Level

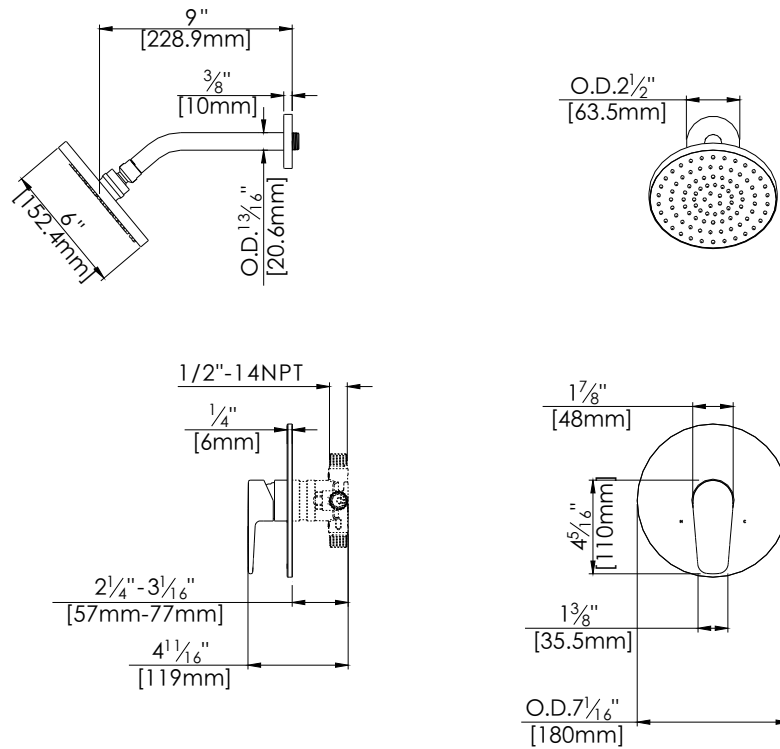


Integral Stops

Available in Polished Chrome (CP) and Brushed Nickel (BN)

## Technical Drawing

F181037T



## Warranty:

Limited Lifetime Faucet Warranty against material and manufacturing defects for residential use.

2 Year Limited Warranty on all industrial, commercial and business applications.

## Codes and Standards:

ANSI/ASME A112.18.1  
CSA B125.1  
IAPMO / cUPC Listed

## Flow Rate:

Shower Head 1.8 gpm @ 60 psig

Low Flow Alternative: Shower Head @ 1.5 gpm: **F181037T-15**