

## Vancouver Tub, Rain Shower & Hand Shower on Slide Bar Trim Kit

### F153124T

### Specifications:

- ➔ Metal construction for durability and reliability
- ➔ Pressure balancing volume control with 3-way, two handle diverting
- ➔ Maximum temperature limit stop for added safety
- ➔ Integral stop check valves for easy maintenance
- ➔ Valve and trim packages are sold separately
- ➔ Requires the fluid F1003B pressure balancing valve, (sold separately and available with shut off or **\*\*sharing** in solder, PEX and PEX-W, F1960 Expansion PEX.)

### Components:

F1001T .....	Cartridge Sleeve
FP6023041 .....	Vancouver Handle
FP801013 .....	Diverter Sleeve
FP605752 .....	Diverter Handle
FP6001143-3PB .....	Square Cover Plate
FP6001050 .....	8" Brass Showerhead
FP6007108 .....	16" Shower Arm
FP40120 .....	3 Function Hand Shower
FA803 .....	Slide Bar With Integral Outlet
FP6001006 .....	60" Shower Hose
FP6054034 .....	Sloped Tub Spout

**\*\*sharing available where allowed by code**

Kit with Alternate ADA Diverter Handle: **F153124-AS**



### Features:

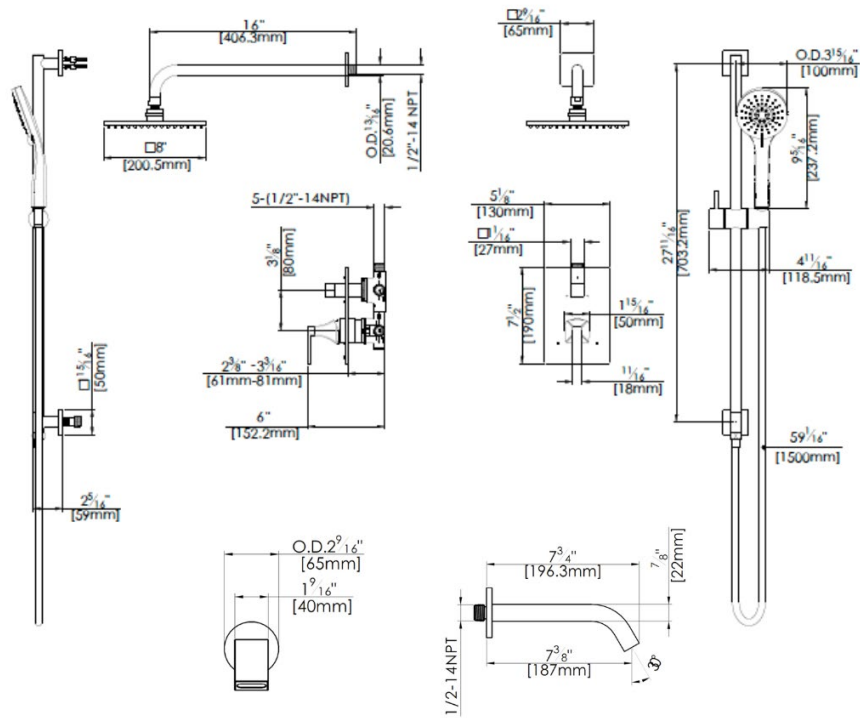
-  Requires F1003B
-  Bubble Level
-  Integral Stops
-  Speed Connect

Available in Polished Chrome (CP) and Brushed Nickel (BN)



## Technical Drawing

## F153124T



**Codes and Standards:** ANSI/ASME A112.18.1, CSA B125.1, IAPMO/cUPC Listed,

### Warranty:

Limited Lifetime Faucet Warranty against material and manufacturing defects for residential use.

2 Year Limited Warranty on all industrial, commercial and business applications.

### Kit Variations:

Kit with ADA diverter handle:  
[F153124T-AS](#)

### Flow Rate:

Shower Head 1.8 gpm @ 60 psig  
 Hand Shower 1.8 gpm @ 60 psig  
 Tub Spout 4.5 gpm @ 60 psig

Low Flow Alternative: Hand Shower  
 @ 1.5 gpm: **F153124T-15**

