

Specifications:

- Metal construction for durability and reliability
- Pressure balancing volume control
- Max-temperature limit stop for added safety
- Integral stop check valves for easy maintenance
- Valve and trim packages are sold separately
- Requires the fluid F1001B pressure balancing valve, (sold separately and available in solder, PEX and PEX-W.)

Components:

F1001T	Sleeve Tube and Cap
FP6028341	Wisdom Handle
FP6001035-1PB	Round Cover Plate
FP6098034L	7.5" Curved Diverting Tub Spout
FP6016008	8" Shower Arm
FP6000350	6" Round Shower Head

Wisdom Curved Diverting Tub Spout & 6" Shower Head Trim Kit

F281023T



Features:



Requires F1001B



Bubble Level



Integral Stops

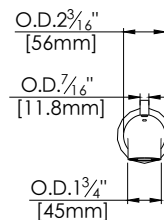
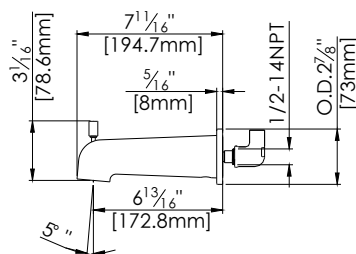
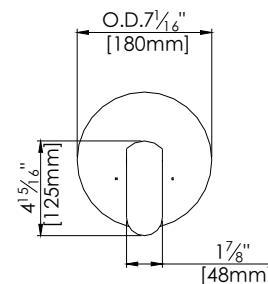
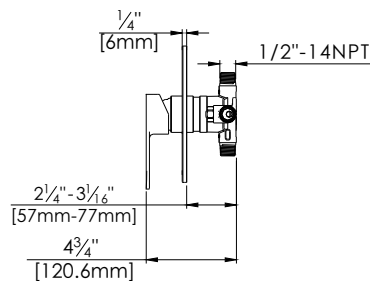
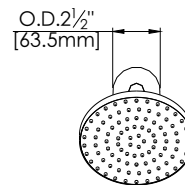
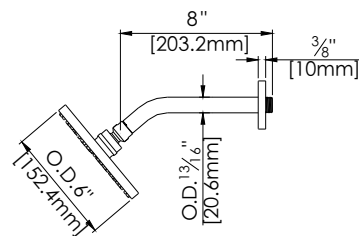


Slip Fit Connection

Polished Chrome (CP), Brushed Nickel (BN) and Matte Black (MB)

Technical Drawing

F281023T



Warranty:

Limited Lifetime Faucet Warranty
against material and manufacturing
defects for residential use.

2 Year Limited Warranty on all industrial,
commercial and business applications.

Codes and Standards:

ANSI/ASME A112.18.1

CSA B125.1

IAPMO / cUPC Listed

EPA Watersense Listed

Flow Rate:

Shower Head 1.8 gpm @ 60 psig

Tub Spout 4.5 gpm @ 60 psig

Low Flow Alternative: Shower Head @
1.5 gpm: **F281023T-15**