

## Specifications:

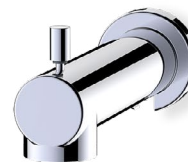
- ➔ Metal construction for durability and reliability
- ➔ Pressure balancing volume control
- ➔ Max-temperature limit stop for added safety
- ➔ Integral stop check valves for easy maintenance
- ➔ Valve and trim packages are sold separately
- ➔ Requires the fluid F1001B pressure balancing valve, (sold separately and available in solder, PEX and PEX-W.)

## Components:

F1001T .....	Sleeve Tube and Cap
FP6024041 .....	Citi Handle
FP6001035-1PB .....	Round Cover Plate
FP6055034 .....	7.5" Round Diverting Tub Spout
FP6016008 .....	8" Shower Arm
FP6000350 .....	6" Round Shower Head

## Citi Round Diverting Tub Spout & 6" Shower Head Trim Kit

F241038T



## Features:



Requires F1001B



Bubble Level



Integral Stops

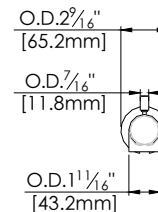
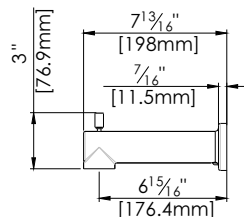
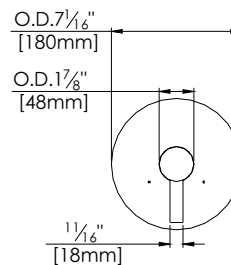
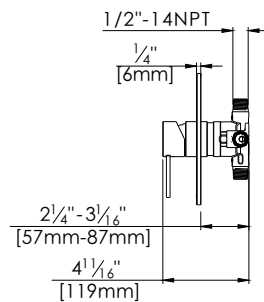
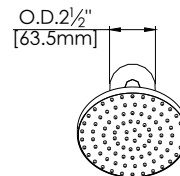
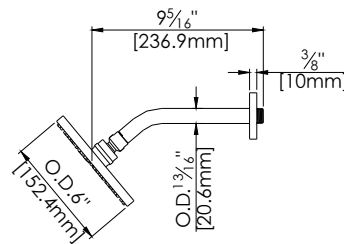


Slip Fit Connection

Polished Chrome (CP), Brushed Nickel (BN) and Matte Black (MB)

## Technical Drawing

F241038T



## Warranty:

Limited Lifetime Faucet Warranty  
against material and manufacturing  
defects for residential use.

2 Year Limited Warranty on all industrial,  
commercial and business applications.

## Codes and Standards:

ANSI/ASME A112.18.1

CSA B125.1

IAPMO / cUPC Listed

EPA Watersense Listed

## Flow Rate:

Shower Head 1.8 gpm @ 60 psig

Tub Spout 4.5 gpm @ 60 psig

Low Flow Alternative: Shower Head @  
1.5 gpm: **F241038T-15**