

Specifications:

- Metal construction for durability and reliability
- Pressure balancing volume control
- Max-temperature limit stop for added safety
- Integral stop check valves for easy maintenance
- Valve and trim packages are sold separately
- Requires the fluid F1001B pressure balancing valve, (sold separately and available in solder, PEX and PEX-W.)

Components:

F1001T	Sleeve Tube and Cap
FP6018041	Utopia Handle
FP6001035-1PB	Round Cover Plate
FP6098035L	7.5" Curved Tub Spout

Utopia 7.5" Curved Tub Spout Only Trim Kit

F181207T



Features:



Requires F1001B



Bubble Level



Integral Stops

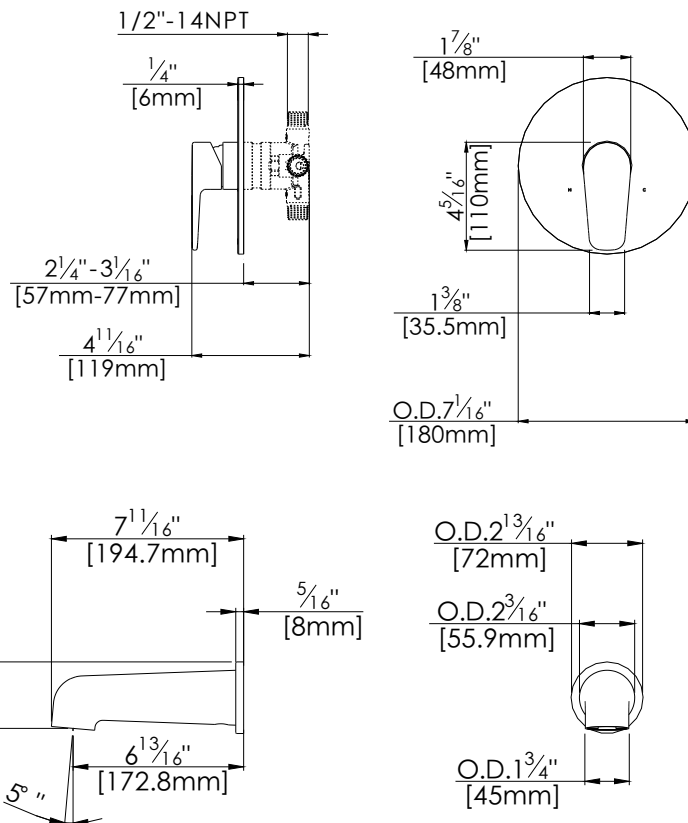


Slip Fit Connection

Polished Chrome (CP), Brushed Nickel (BN)

Technical Drawing

F181207T



Warranty:

Limited Lifetime Faucet Warranty against material and manufacturing defects for residential use.

2 Year Limited Warranty on all industrial, commercial and business applications.

Codes and Standards:

ANSI/ASME A112.18.1

CSA B125.1

IAPMO / cUPC Listed

EPA Watersense Listed

Flow Rate:

Tub Spout 4.5 gpm @ 60 psig