

Yaletown 5 Function Shower & Round Hand Shower on Slide Bar

F192204T

Specifications:

- ➔ Metal construction for durability and reliability
- ➔ Pressure balancing volume control with 2-way, two handle diverting
- ➔ Maximum temperature limit stop for added safety
- ➔ Integral stop check valves for easy maintenance
- ➔ Valve and trim packages are sold separately
- ➔ Requires the fluid F1012B pressure balancing valve, (sold separately and available with shut off or **sharing in solder, PEX and PEX-W, F1960 Expansion PEX.)

Components:

F1001T	Cartridge Sleeve
FP6019041	Yaletown Handle
FP801013	Diverter Sleeve
FP605652	Diverter Handle
FP6001142-2PB	Round Cover Plate
FP6016008	8" Shower Arm
FP20100	5 Function Shower Head
FP6001048	Round Hand Shower
FA105	Slide Bar
FP6002047	Wall Outlet
FP6001006	60" Shower Hose

**sharing available where allowed by code

Kit with Alternate ASA Diverter Handle: **F192204T-AR**



Features:

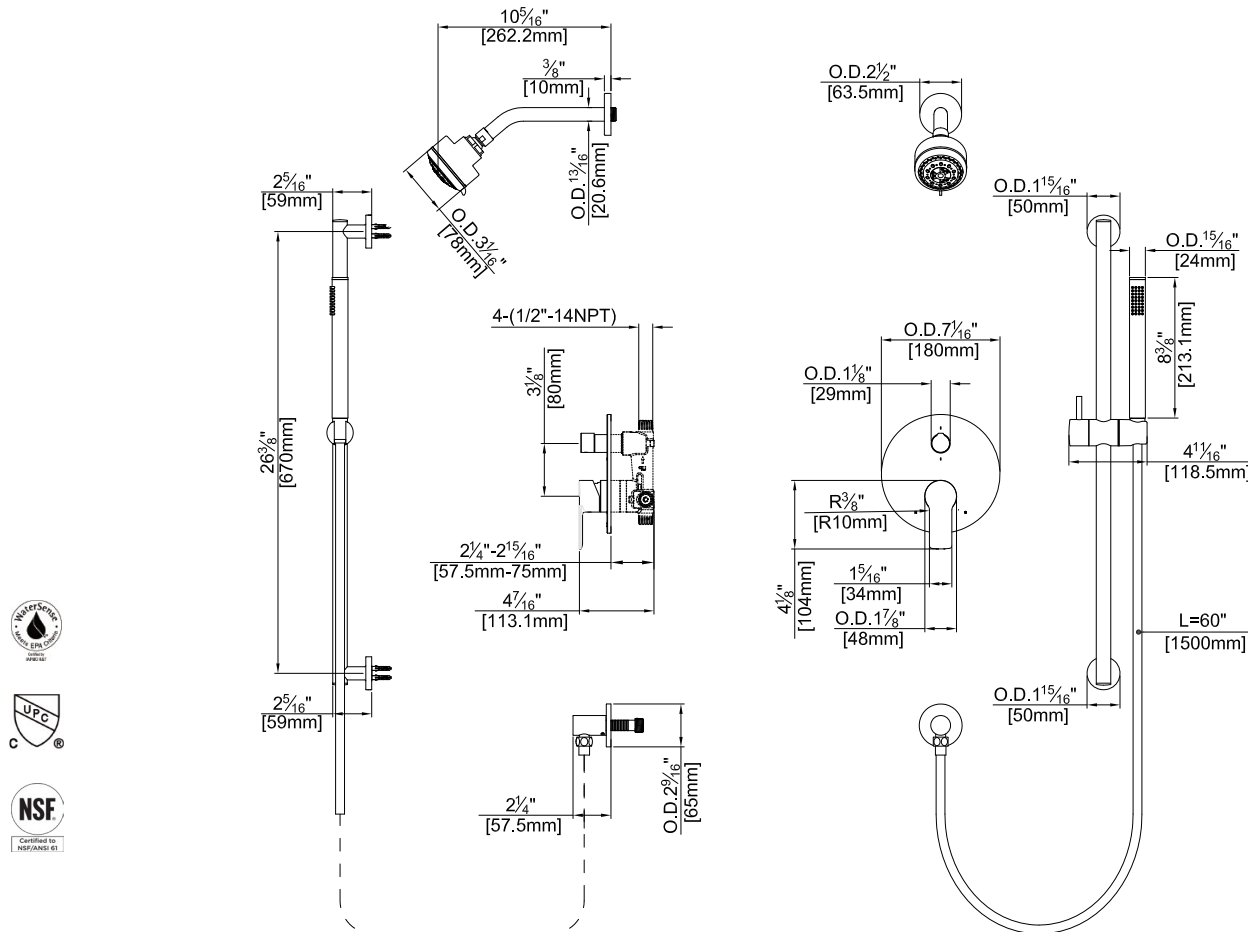
- Requires F1012B
- Bubble Level
- Integral Stops
- Speed Connect



Available in Polished Chrome (CP) and Brushed Nickel (BN)

Technical Drawing

F192204T



Codes and Standards: ANSI/ASME A112.18.1, CSA B125.1, IAPMO/cUPC Listed, EPA Watersense Listed

Warranty:

Limited Lifetime Faucet Warranty against material and manufacturing defects for residential use.

2 Year Limited Warranty on all industrial, commercial and business applications.

Kit Variations:

Kit with ADA diverter handle:

F192204T-AR

Kit with square style cover plate & diverter handle: **F192204T-S**

Flow Rate:

Shower Head 1.8 gpm @ 60 psig

Hand Shower 1.8 gpm @ 60 psig

Low Flow Alternative: Shower Head & Hand Shower @ 1.5 gpm:

F192204T-15