

Specifications:

- ➔ Metal construction for durability and reliability
- ➔ Pressure balancing volume control with 2-way diverter, with shut off or **sharing
- ➔ Maximum temperature limit stop for added safety
- ➔ Integral stop check valves for easy maintenance
- ➔ Valve and trim packages are sold separately
- ➔ Requires the fluid F1012B pressure balancing valve, (sold separately and available with shut off or **sharing, in solder, PEX or PEX-W, F1960 Expansion PEX.)

Components:

F1001T	Sleeve Tube and Cap
FP801013	Diverter Sleeve
FP6001142-2PB	Round Cover Plate
FP605652	Round Diverter Handle
FP6019041	Yaletown Handle
FP6006008	16" Shower Arm
FP6002050	8" Brass Showerhead
FP6001048	Round Hand Shower
FP6001010	Hand Shower Holder
FP6002047	Brass Wall Outlet
FP6001006	60" Shower Hose

**sharing available where allowed by code

Kit with Alternate ADA Diverter Handle: **F192201T-AR**



Features:

- Requires F1012B
- Bubble Level
- Integral Stops
- Speed Connect

Yaletown Rain Shower Head & Hand Shower Wand Trim Kit

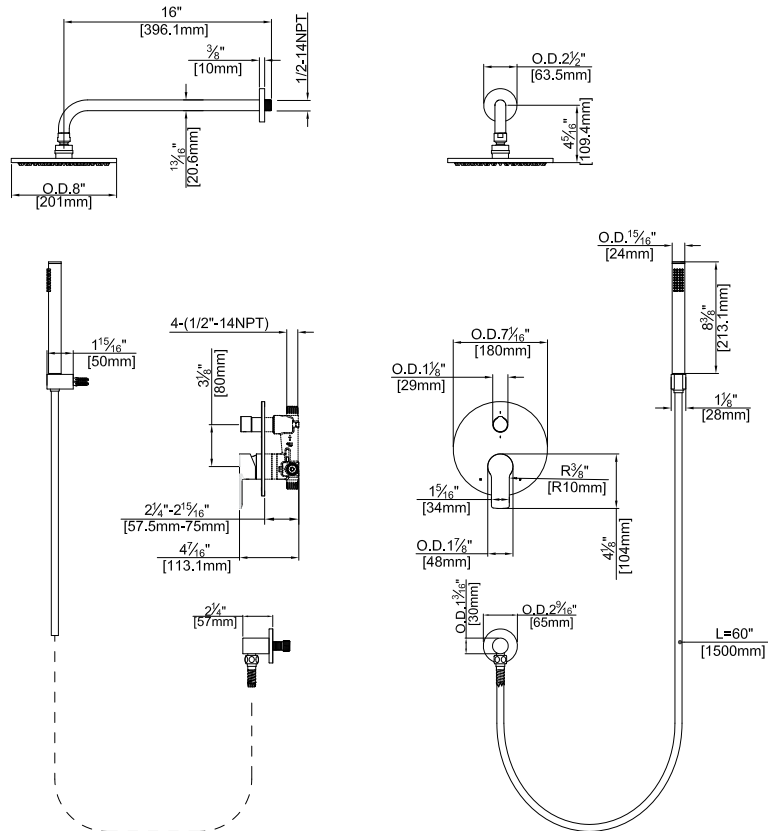
F192201T



Available in Polished Chrome (CP) and Brushed Nickel (BN)

Technical Drawing

F192201T



Codes and Standards: ANSI/ASME A112.18.1, CSA B125.1, IAPMO /cUPC Listed, EPA Watersense Listed

Warranty:

Limited Lifetime Faucet Warranty against material and manufacturing defects for residential use.

2 Year Limited Warranty on all industrial, commercial and business applications.

Kit Variations:

Kit with ADA diverter handle:

F192201T-AR

Kit with square style cover plate & diverter handle: **F192201T-S**

Flow Rate:

Shower Head 1.8 gpm @ 60 psig

Hand Shower 1.8 gpm @ 60 psig

Low Flow Alternative: Hand Shower @ 1.5 gpm: **F192201T-15**