

## Yaletown 4" Eco Shower & Hand Shower Trim Kit with Slide Bar

F192012T

### Specifications:

- ➔ Metal construction for durability and reliability
- ➔ Pressure balancing volume control with 2-way, two handle diverting
- ➔ Maximum temperature limit stop for added safety
- ➔ Integral stop check valves for easy maintenance
- ➔ Valve and trim packages are sold separately
- ➔ Requires the fluid F1012B pressure balancing valve, (sold separately and available with shut off or \*\*sharing in solder, PEX and PEX-W, F1960 Expansion PEX.)

### Components:

F1001T .....	Cartridge Sleeve
FP6019041 .....	Yaletown Handle
FP801013 .....	Diverter Sleeve
FP605652 .....	Diverter Handle
FP6001142-2PB .....	Cover Plate
FP6016008 .....	8" Shower Arm
FP10200 .....	4" Eco Shower Head
FP6016008 .....	8" Shower Arm
FP6001048 .....	Round Hand Shower
FA105 .....	Slide Bar
FP6002047 .....	Wall Outlet
FP6001006 .....	60" Shower Hose

\*\*sharing available where allowed by code

Kit with Alternate ADA Diverter Handle: **F192012T-AR**



### Features:

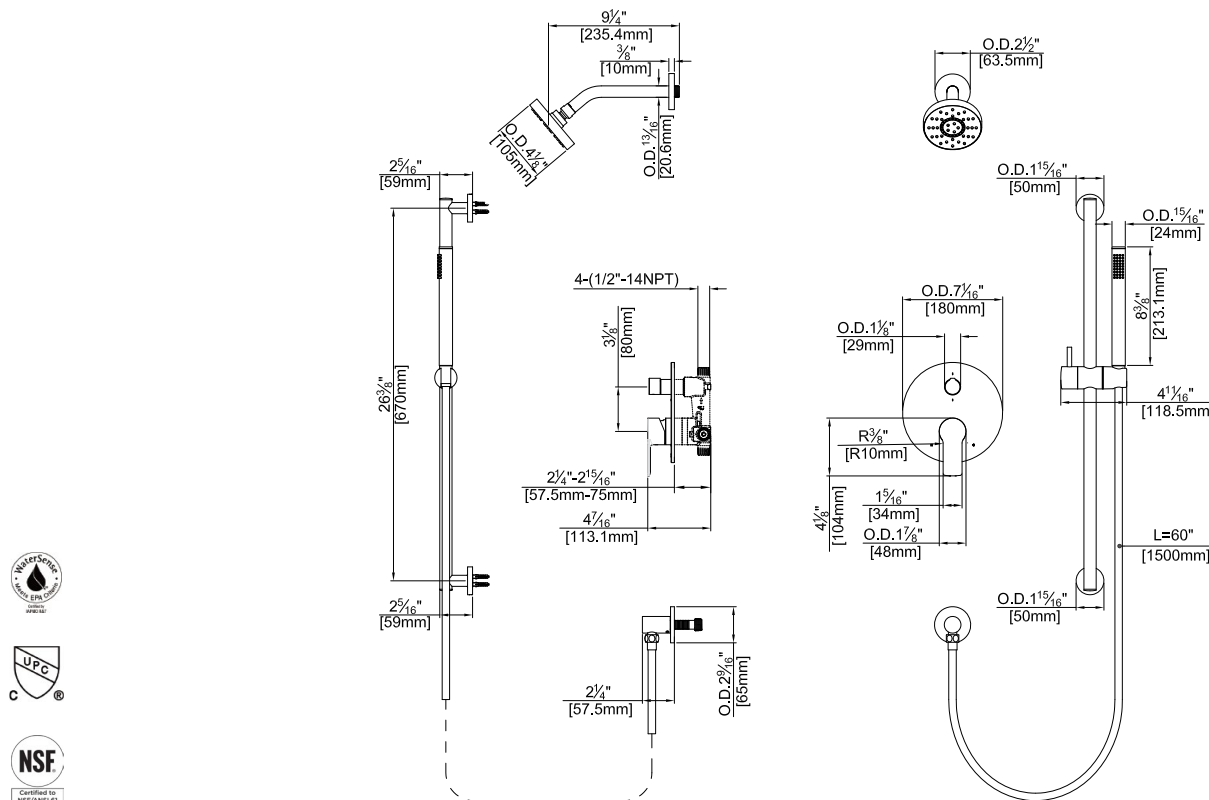
-  Requires F1012B
-  Bubble Level
-  Integral Stops
-  Speed Connect



Available in Polished Chrome (CP) and Brushed Nickel (BN)

## Technical Drawing

F192012T



**Codes and Standards:** ANSI/ASME A112.18.1, CSA B125.1, IAPMO / cUPC Listed, EPA Watersense Listed

### Warranty:

Limited Lifetime Faucet Warranty against material and manufacturing defects for residential use.

2 Year Limited Warranty on all industrial, commercial and business applications.

### Kit Variations:

Kit with ADA diverter handle:

**F192012T-AR**

Kit with square style cover plate & diverter handle: **F192012T-S**

### Flow Rate:

Shower Head 1.8 gpm @ 60 psig

Hand Shower 1.8 gpm @ 60 psig

Low Flow Alternative: Shower Head & Hand Shower @ 1.5 gpm:

**F192012T-15**