

## Specifications:

- Metal construction for durability and reliability
- Pressure balancing volume control
- Maximum temperature limit stop for added safety
- Integral stop check valves for easy maintenance
- Valve and trim packages are sold separately
- Requires the fluid F1001B pressure balancing valve, (sold separately and available in solder, PEX and PEX-W, F1960 Expansion PEX.)

## Components:

F1001T ..... Cartridge Sleeve  
 FP6019041 ..... Yaletown Handle  
 FP6001033-1PB ..... Square Cover Plate  
 FP6007108 ..... 16" Rain Shower Arm  
 FP6001050 ..... 8" Brass Rain Shower Head\*



\* Matte Black kitd feature the alternate  
 FP6001150MB ABS Rain Shower Head

## Yaletown 8" Square Rain Shower Head Only Trim Kit

F191098T



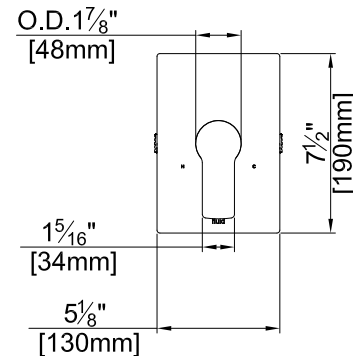
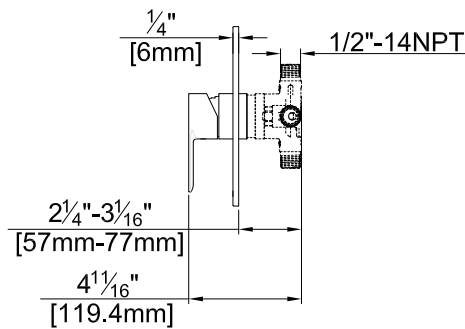
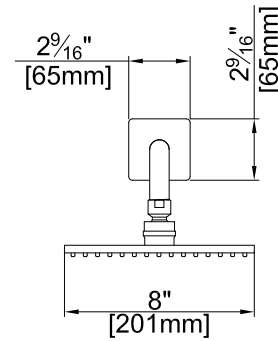
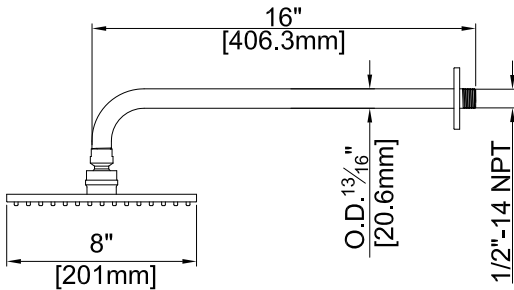
## Features:

-  Requires F1001B
-  Bubble Level
-  Integral Stops

Polished Chrome (CP), Brushed Nickel (BN) and \*Matte Black (MB)

## Technical Drawing

F191098T



### Warranty:

Limited Lifetime Faucet Warranty against material and manufacturing defects for residential use.  
2 Year Limited Warranty on all industrial, commercial and business applications.

### Codes and Standards:

ANSI/ASME A112.18.1  
CSA B125.1  
IAPMO / cUPC Listed  
EPA Watersense Listed

### Flow Rate:

Shower Head 1.8 gpm @ 60 psig