

## Yaletown 6" Shower Head Only Trim Kit

F191037T

### Specifications:

- ➔ Metal construction for durability and reliability
- ➔ Pressure balancing volume control
- ➔ Maximum temperature limit stop for added safety
- ➔ Integral stop check valves for easy maintenance
- ➔ Valve and trim packages are sold separately
- ➔ Requires the fluid F1001B pressure balancing valve, (sold separately and available in solder, PEX and PEX-W, F1960 Expansion PEX.)

### Components:

F1001T .....	Sleeve Tube and Cap
FP6019041 .....	Yaletown Handle
FP6001035-1PB .....	Round Cover Plate
FP6000350 .....	6" Shower Head
FP6016008 .....	8" Shower Arm



### Features:



Requires F1001B



Bubble Level

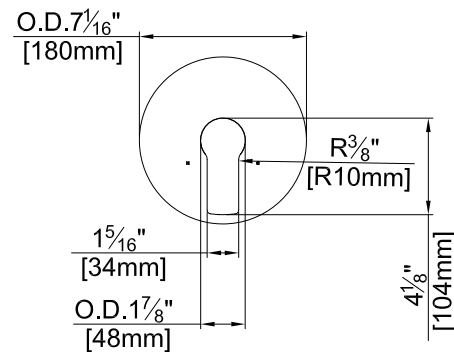
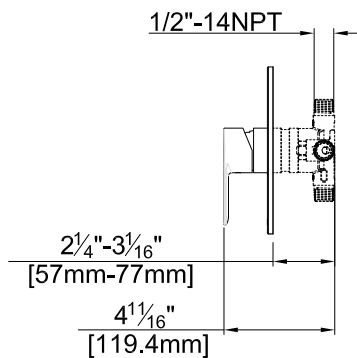
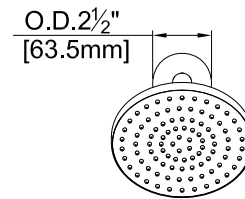
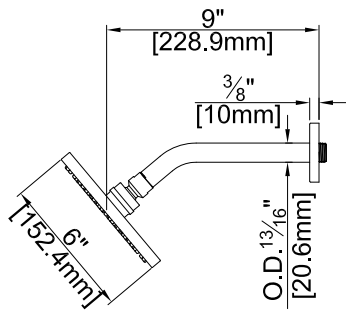


Integral Stops

Polished Chrome (CP), Brushed Nickel (BN) and Matte Black (MB)

## Technical Drawing

F191037T



### Warranty:

Limited Lifetime Faucet Warranty against material and manufacturing defects for residential use.  
2 Year Limited Warranty on all industrial, commercial and business applications.

### Codes and Standards:

ANSI/ASME A112.18.1  
CSA B125.1  
IAPMO / cUPC Listed  
EPA Watersense Listed

### Flow Rate:

Shower Head 1.8 gpm @ 60 psig  
  
Low Flow Alternative: Shower Head @ 1.5 gpm: **F191037T-15**