

Specifications:

- ➔ Metal construction for durability and reliability
- ➔ Pressure balancing volume control
- ➔ Maximum temperature limit stop for added safety
- ➔ Integral stop check valves for easy maintenance
- ➔ Valve and trim packages are sold separately
- ➔ Requires the fluid F1001B pressure balancing valve, (sold separately and available in solder, PEX and PEX-W, F1960 Expansion PEX.)

Components:

F1001T	Cartridge Sleeve
FP6019041	Yaletown Handle
FP6001035-1PB	Round Cover Plate
FP20100	5 Function Shower Head
FP6016008	8" Shower Arm

Yaletown 5 Function Shower Head Trim Kit

F191006T



Features:



Requires F1001B



Bubble Level

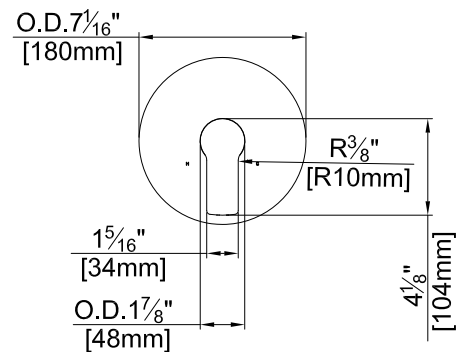
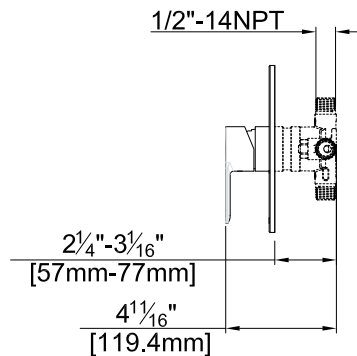
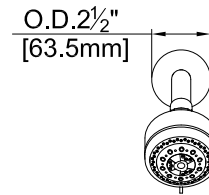
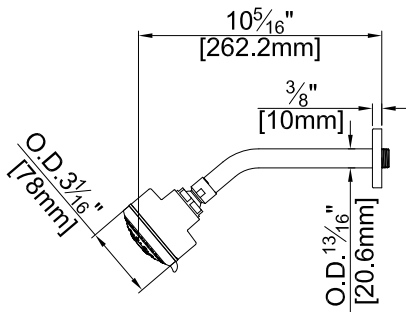


Integral Stops

Polished Chrome (CP), Brushed Nickel (BN) and Matte Black (MB)

Technical Drawing

F191006T



Warranty:

Limited Lifetime Faucet Warranty against material and manufacturing defects for residential use.
2 Year Limited Warranty on all industrial, commercial and business applications.

Codes and Standards:

ANSI/ASME A112.18.1
CSA B125.1
IAPMO / cUPC Listed
EPA Watersense Listed

Flow Rate:

Shower Head 1.8 gpm @ 60 psig

Low Flow Alternative: Shower Head @ 1.5 gpm: **F191006T-15**