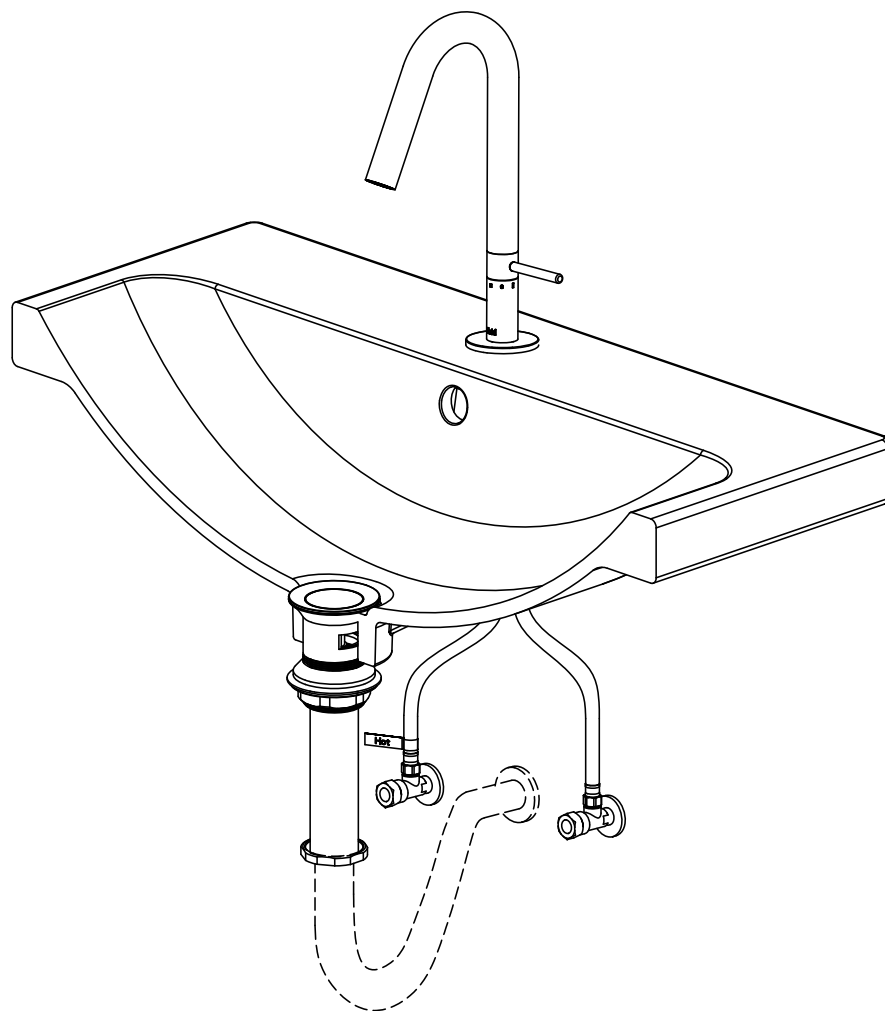


# fluid

innovative fixtures for life

## Installation Instructions:

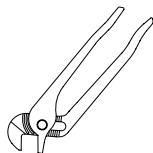
### Single Handle Design 21 Basin Faucet with Quick Clean Waste Drain



PG 1

DATE OF ISSUE: APRIL 2023

#### Tools Required:



#### Tools Supplied with Faucet:



**Sustainable  
Solutions**

Vancouver, BC, CAN + Ferndale, WA, USA

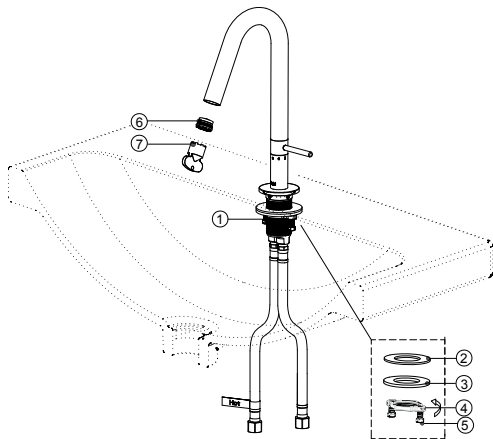


#### Need Help?

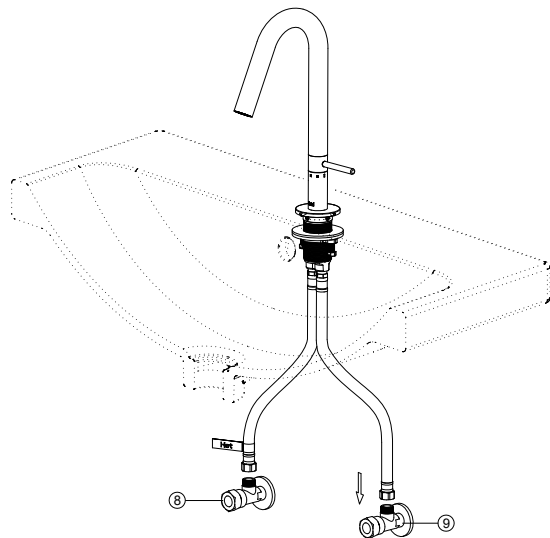
Visit: [sustainable-solutions.com](https://sustainable-solutions.com)  
help@[sustainable-solutions.com](mailto:sustainable-solutions.com)  
Call: 1 800 460 7019

## Installation Instructions:

1



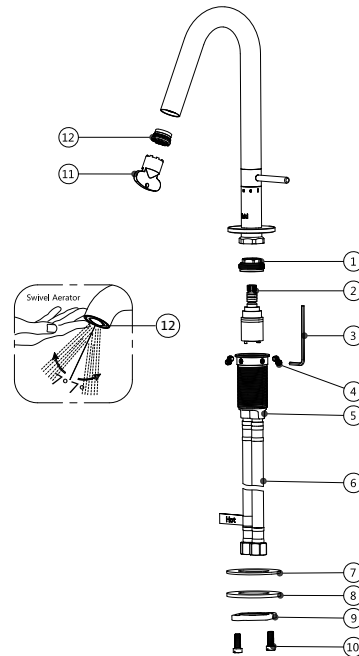
2



1. Shut off hot and cold water supplies. Place faucet on the mounting surface by feeding the inlet supply hoses through the faucet hole. From below, fit rubber gasket (#2), metal gasket (#3) and mounting bracket (#4) onto the body (#1). Thread mounting bracket (#4) by hand, tightening to secure the rubber gasket (#2) and metal gasket (#3) up against the bottom of the mounting surface. Tighten the two attached screws (#5) with a Phillips screwdriver.
2. Make sure all fittings and end connections are free of debris. Faucet connections are  $\frac{3}{8}$ " compression fittings. Connect the hot and cold inlet supply hoses to the supply valves (#8 & #9). Make sure that the hose with the **HOT** label is connected to the hot supply valve (#8). Hand tighten, then tighten one additional turn with a wrench. **DO NOT OVER-TIGHTEN.**

## Care and Maintenance Instructions:

*fluid products are designed and engineered under strict quality standards. Regular and proper care of our products will ensure years of trouble-free operation.*



### How to adjust the flow direction:

The vandal proof swivel aerator features water saving technology and the ability to direct water flow. Adjust the flow direction by simply pushing the inside of the aerator (#12) to direct the stream.

### If faucet exhibits very low flow:

- A. Remove the aerator with the supplied service key (#11) and rinse the aerator (#12) with clean running water to ensure that any trapped debris has been removed.
- B. Wash the cartridge (#2) with clean running water and ensure that any trapped debris has been removed.

### If your faucet leaks from the spout:

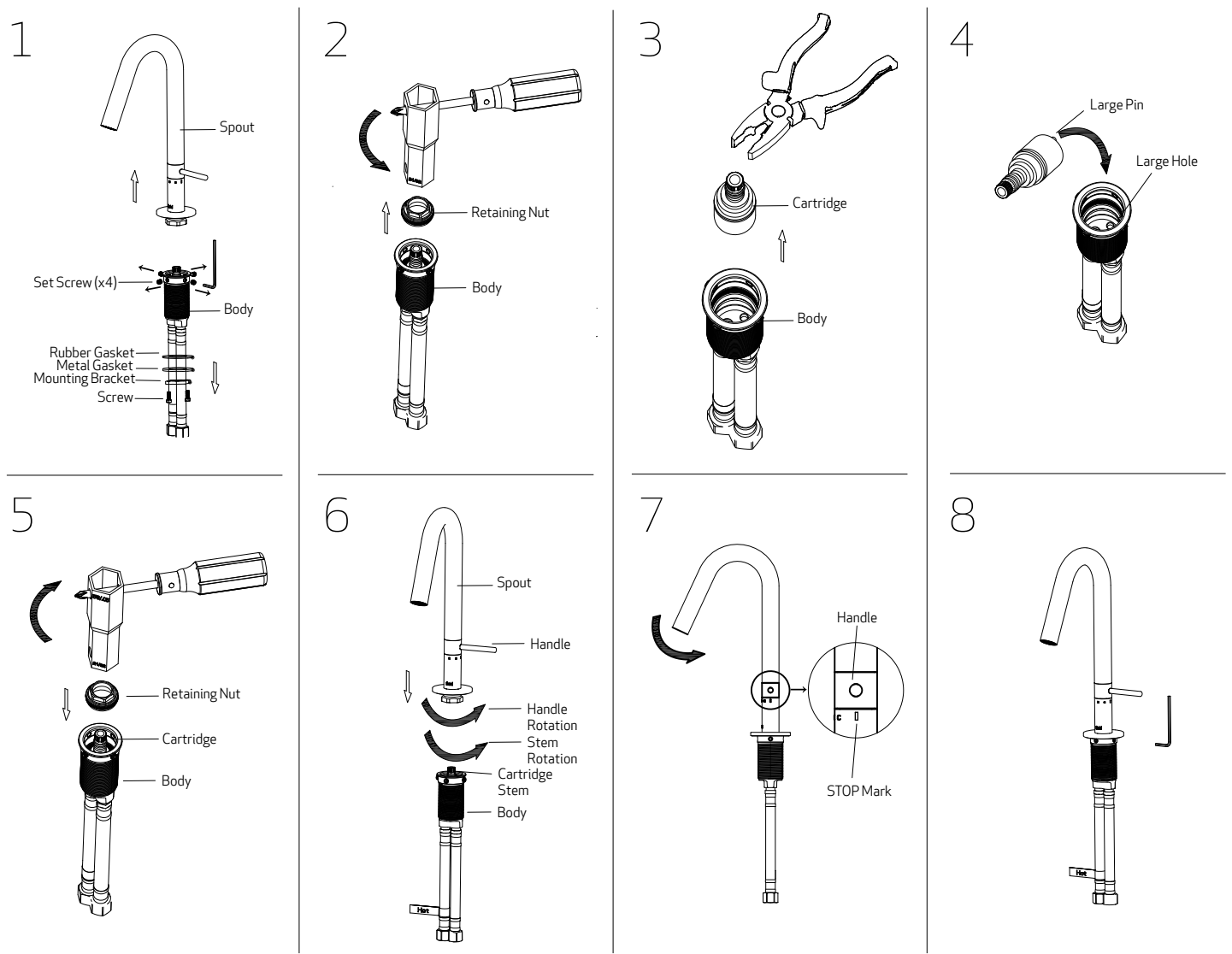
Replace cartridge (#2).

### How to clean the faucet surface:

Clean with a damp cloth and warm soapy water. Then rinse, and wipe dry with a soft cloth. Do not use abrasive or harsh cleaners as they may result in finish damage. **NOTE:** if you live in an area with hard water, drying your faucet after each use will help to prevent mineral build up.

**WARNING:** Do not use pipe dope or other sealants on water connections. **FLUSH SYSTEM AND CHECK FOR LEAKS:** Remove aerator (#6) using supplied service key (#7) and turn faucet handle to the full on position. Turn on hot and cold water supplies (#8 & #9) and flush water lines for one minute. Check all connections for leaks. Reinstall aerator (#6) with service key (#7). **IMPORTANT:** This flushes away any debris that could cause damage to internal parts.

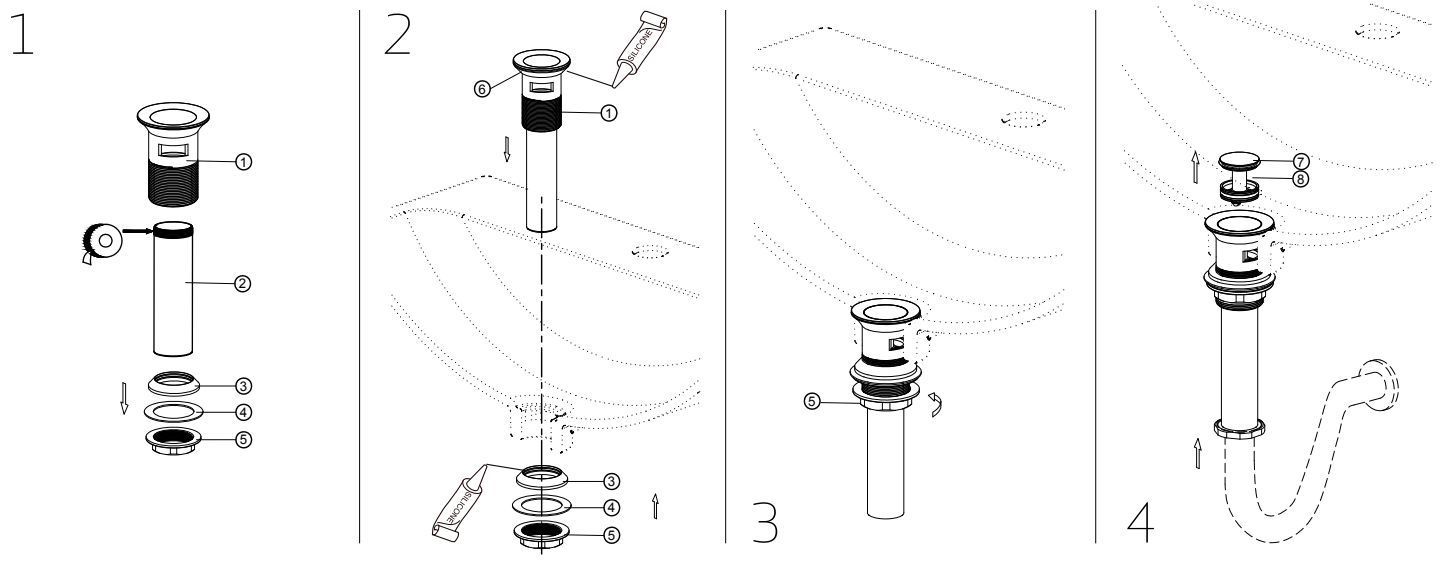
# How to Remove & Replace the Cartridge



1. Pull up the faucet from the mounting surface after removing screws, mounting bracket, friction washer and rubber gasket. Loosen the 4 set screws with supplied Allen wrench. Separate spout from the body by pulling it straight up.
2. Remove retaining nut using a  $2\frac{1}{32}$ " socket wrench.
3. To protect the teeth on the cartridge stem, wrap the stem with a soft cloth. Pull the cartridge straight up, using a small pair of pliers.
4. To install cartridge, insert cartridge into body by aligning the large and the small position pins on the bottom of cartridge with the large and small position holes in the cavity. Use fingers to firmly push the cartridge in without any left or right movement.
5. Screw in the brass retaining nut and tighten with a  $2\frac{1}{32}$ " socket wrench. Do not over-tighten.
6. Grab the cartridge stem with fingers and turn the stem counter-clockwise all the way to the end. Turn the handle counter-clockwise all the way to the end. Reconnect the spout with the body by pushing the spout back into place, fully engaging the cartridge.
7. Before tightening, check the handle alignment and make sure that the handle is lined up with the STOP laser mark etched on the spout. If not, gently turn spout until the handle is in a straight line with STOP laser mark on the spout. If the handle isn't aligned properly, remove and repeat #6, making sure that both the cartridge stem and handle are both turned counterclockwise all the way to the end.
8. Tighten each set screw with the supplied Allen wrench until feel a small resistance. Then make a final turn of each screw until it stops one by one.

# Installation Instructions:

## Pop Up Installation:



**1.** Remove black rubber seal (#3), friction washer (#4) and locknut (#5) from body (#1). Unscrew tail pipe (#2) from body (#1). Wrap the threads with Teflon tape, then screw tail pipe (#2) into body (#1).

**2.** With silicon sealant or white rubber seal (#6) under the flange, insert body (#1) through drain hole from above. Ensure silicon sealant or rubber seal (#6) securely seats inside the drain hole.  
**NOTE:** A silicone sealant or rubber seal (#6) will work in the majority of installations. However, if there is a large slope or an uneven drain surface, it is recommended that the installer run a bead of plumber's putty below the flange to achieve a water tight seal

Apply silicone grease to the inside diameter of the black rubber seal (#3) and threads on body (#1). Install black rubber seal (#3), friction washer (#4) and locknut (#5) onto body (#1).

**3.** Tighten locknut (#5) by wrench. Do Not Overtighten.

**4.** Push to raise stopper (#7) to open the drain. Push to lower stopper (#7) to close the drain. To clean the basket (#8), pull the stopper (#7) straight up to remove the basket (#8). Remove any dirt or hair that has accumulated in the basket. Replace the basket by gently pushing it back into place.

## Limited Lifetime Warranty:

fluid warrants its faucets to be free from defects in material and workmanship for as long as the original consumer/purchaser/owner owns his or her home.\* Plastic and rubber components are warrantied for a period of two years. This warranty applies only to original installation locations. If a defect is found in normal residential use, fluid will, at its election, repair, provide a replacement part or product, or make the appropriate adjustment. fluid reserves the right to examine the product in question and its installation prior to replacement. This warranty is limited to replacement of defective parts only. Damage to a product caused by accident, improper installation, misuse or abuse, improper care of finishes, hard water or mineral deposits, potassium or salt based water softener systems or exposure to corrosive materials is not covered by this warranty. Improper care and cleaning will void the warranty.\*\*\* Replacement parts can be obtained from your local dealer or directly from the fluid warehouse, (shipping charges may apply). Dated proof of purchase must accompany all warranty claims. This warranty applies only to fluid faucets installed in the United States of America, Canada or Mexico (North America). fluid recommends using a certified plumber for faucet installation and repair. Incidental and consequential damages, labor charges, repair or replacement costs are expressly excluded. In no event shall the liability of fluid exceed the purchase price of the faucet. Some states and provinces do not allow the exclusion or limitation of incidental or consequential damages, so the above limitation may not apply to you. This warranty gives you specific legal rights which vary from state/province to state/province. If you find any such problem with your product, please immediately contact your nearest fluid dealer or sales representative.

\* Two year warranty on commercial applications.

\*\*\* Never use cleaners containing abrasive cleansers, ammonia, bleach, acids, waxes, alcohol, solvents or other products not recommended for surface finish. This will void the warranty.