

fluid

Innovative fixtures for life

SPECIFICATIONS

Customer Service: 1-800-460-7019
www.fluidfaucets.com

**Sustainable
Solutions**

Specifications

- Contemporary square shape design
- Heavy metal construction for durability and reliability
- 1/2" slip-on connection

Finish

- CP (Polished Chrome)
- BN (PVD Brushed Nickel)
- MB (Matte Black)

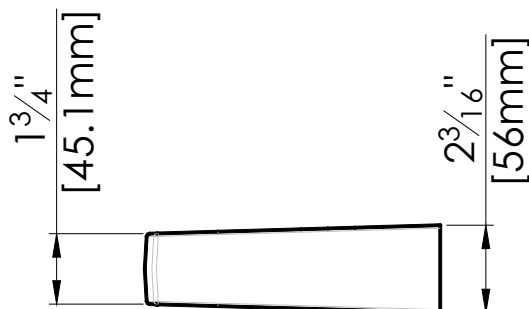
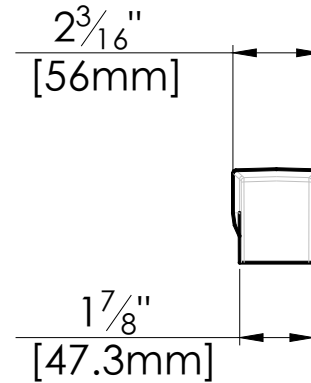
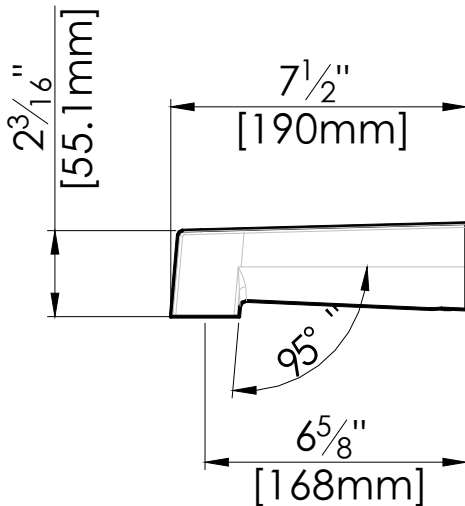
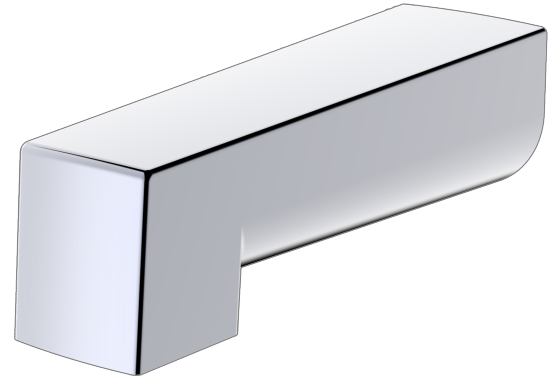
Codes and Standards

- ANSI/ASME A112.18.1
- CSA B125.1
- IAPMO / cUPC

Warranty

- Limited Lifetime Faucet Warranty against material and manufacturing defects for residential use.
- 2 Year Limited Warranty on all industrial, commercial and business applications.

fluid 7-1/2" Slip-Fit Tub Spout Model: FP6096035



Sustainable Solutions

8395 Riverbend Court, Burnaby, BC
V3N 5E7, Canada

FP6096035 / REV0 2022