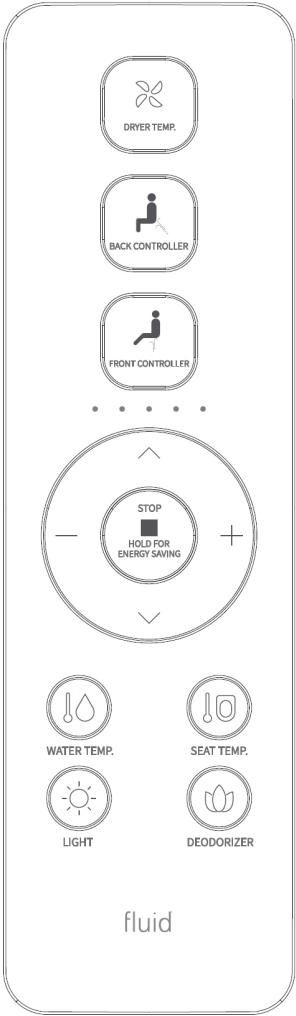


fluid bidet seat

Remote Control Instructions



fluid

Table of Contents

Installation preparation

Remote control installation	01
Battery installation	01

Operation Instructions

Remote control illustration	02
Back / Front washing	03
Water volume adjustment	04
Nozzle position adjustment	04
Drying / Dryer temperature	04
Energy saving	04
Water temperature adjustment	05
Seat temperature adjustment	05
Night light	05
Deodorizer	05
Quiet Mode	06

Thank you for choosing our product. Please read the instructions carefully before installation and keep them available for future maintenance or reference.

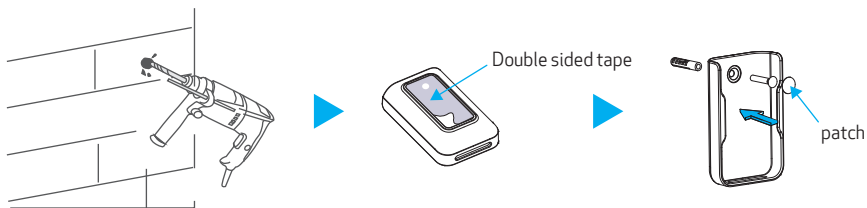


Installation Preparation

Remote Control Installation

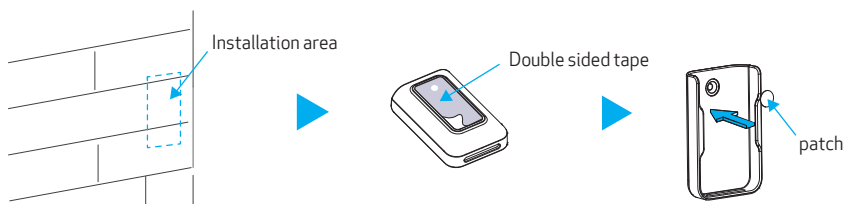
Remote control holder installation 1 :

1. Drill a 6 mm diameter hole in the wall to a depth of about 35 mm.
2. Remove the double sided adhesive tape on the back of the holder.
3. Install an anchor into the hole, stick the holder to the wall and secure with screws and then stick the patch with tape.



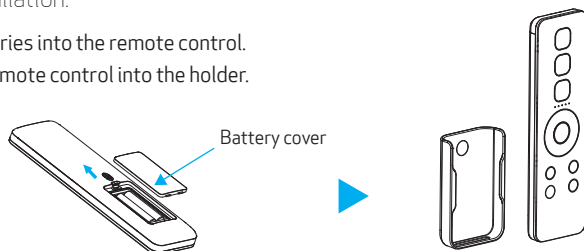
Remote control holder installation 2 :

1. Clean and dry the pre-installation area of the holder.
2. Remove the double sided adhesive tape on the back of the holder.
3. Stick the holder to the wall vertically and then stick the patch with tape.



Battery installation:

1. Insert batteries into the remote control.
2. Place the remote control into the holder.



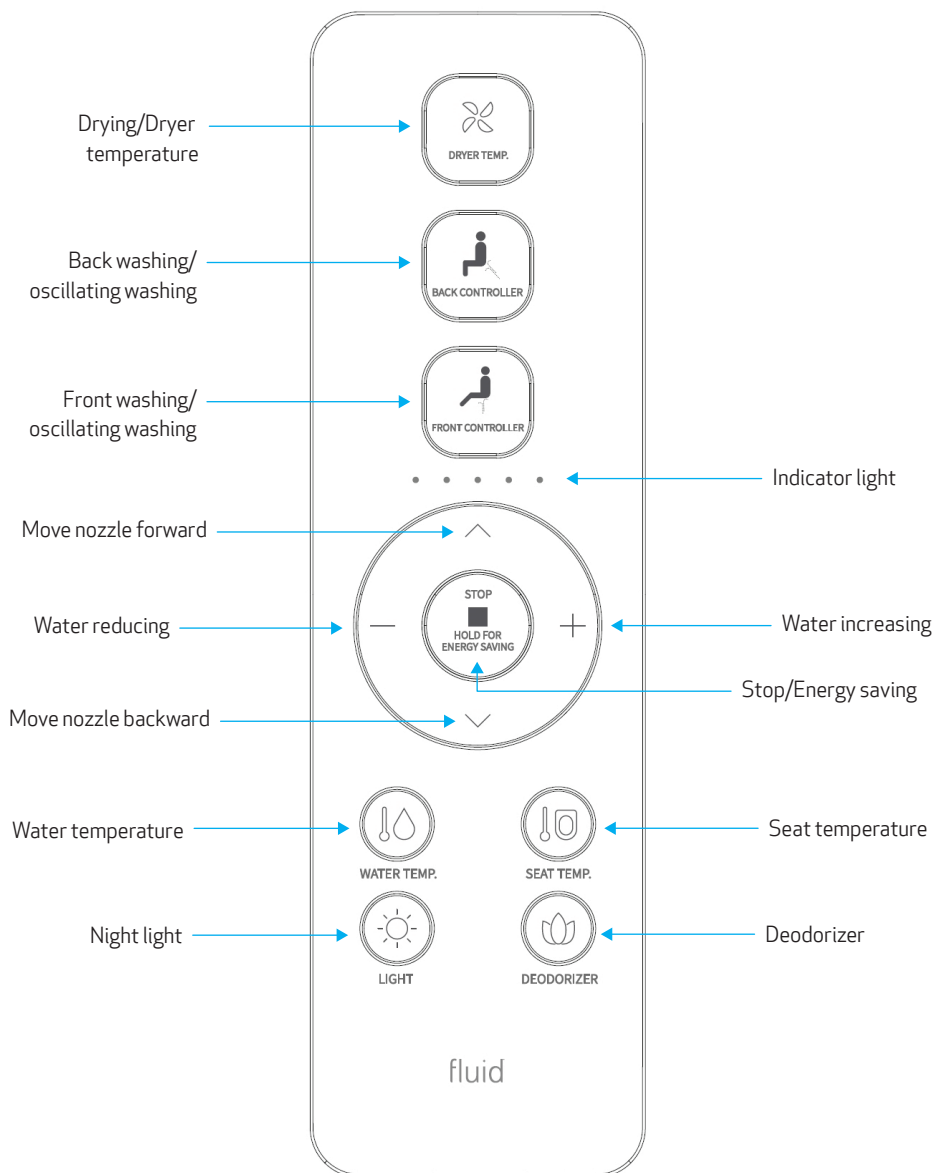
Notes:

1. Please ensure that the remote control is within reach when a person is on the seat.
2. Do not install and use the product in damp environments such as shower or steam rooms.
3. Do not place the product in any environment where it is easily exposed to water



Operation Instructions

Remote Control Illustration






Operation Instructions

Notice:

- Front and back washing and drying functions can only be activated once the user is seated and the product beeps once.
- Please sit squarely on the seat for correct washing position and to avoid splashing.
- The nozzle will continue to spray for 1-2 seconds if the user stands up during washing, so please press the "STOP" button before standing up.




Back Controller

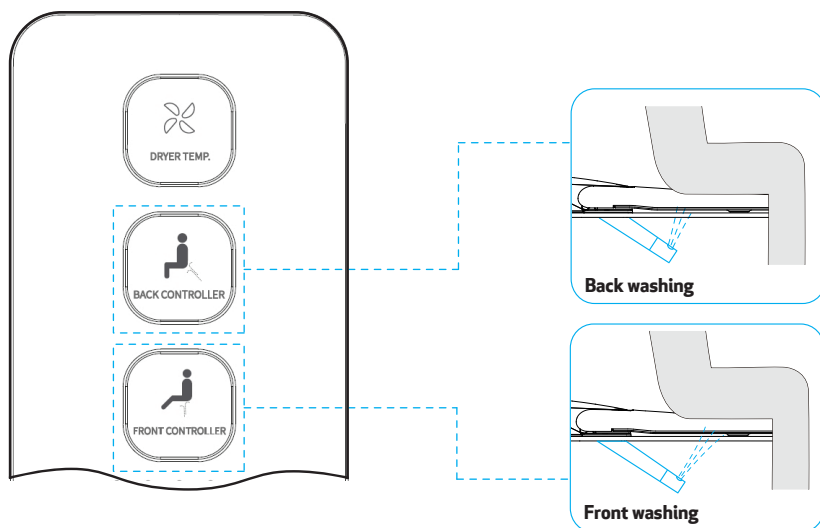


Press the  button to activate the back controller. (Note that the indicator lights will show the current water temperature level). Press the  button again to shift to an oscillating spray, (meaning that the nozzle will move forward and backward). The washing will stop automatically after a full cycle, (approximately 2 minutes and 20 seconds). To stop immediately, press the  button.

Front Controller



Press the  button to activate the front controller. (Note that the indicator lights will show the current water temperature level). Press the  button again to shift to an oscillating spray, (meaning that the nozzle will move forward and backward). The washing will stop automatically after a full cycle, (approximately 2 minutes and 20 seconds). To stop immediately, press the  button.



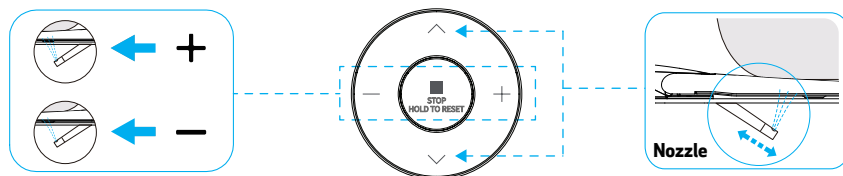
Operation Instructions

Water Volume Adjustment

Press the + or - button during either front or back washing to adjust the water volume level. The indicator lights will display the current water volume level.


Nozzle Position Adjustment


While either the front or back washing is functioning, press the ↑ or ↓ buttons to adjust the nozzle position. There are 5 levels of nozzle positioning.

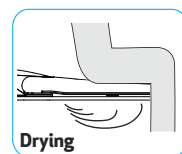


Dry / Dryer Temperature





1. Press the  button to start the drying function. (Note that the indicator lights will show the current dryer temperature level). The dryer will stop after one full dryer cycle, (about 2 minutes and 20 seconds), or if the person stands up or if the stop button is pushed.

2. Once the dryer has started, press the  button to adjust the air temperature between levels 0-5. The diagram below illustrates how the indicator lights show the various dryer temperatures. When the indicator light is off, the temperature is at level 0, (room temperature).



Energy Saving



Long press  button to enter energy saving mode, long press  button again to exit energy saving mode. Under energy saving mode, seat temperature is set to Level 1 for energy saving.

Note:


The energy saving mode will be suspended and the product will enter the functional mode during use. The seat will start to heat immediately to the last temperature setting, and the energy saving mode will be restored once the seat is no longer being used.



Operation Instructions

Water Temperature Adjustment




Short press the  button to adjust the water temperature between levels 0-5.

The diagram below illustrates how the indicator lights display the current water temperature level. When the indicator light is off, the temperature is at level 0, (room temperature).

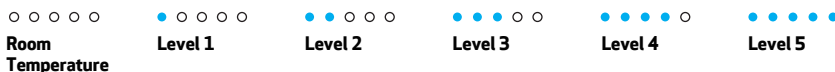


Seat Temperature Adjustment




Short press the  button to adjust the seat temperature between levels 0-5.

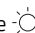
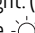
The diagram below illustrates how the indicator lights display the current seat temperature level. When the indicator light is off, the temperature is at level 0, (room temperature).



Night Light




Short Press the  button to turn on/off the night light.

Intelligent Mode: Long press the  button to enter into intelligent model. In this mode the light will illuminate depending on the surrounding light. (The light will turn on in the dark, and off in the light). To exit intelligent mode, short press the  button. (The seat is factory set to intelligent mode).

Deodorizer




Short press the  button to turn on/off the auto deodorizer function.

If turned on, the deodorizer function will automatically start when the user is seated, and will stop automatically after the user has stood up. When the dryer function is turned on, the deodorizer function will automatically turn off.



Operation Instructions

Quiet Mode

Press and hold the ■ button and the  button together to turn on/off the quiet mode. When quiet mode is on the seat will not beep for each adjustment.

Note:

The seat will Beep once when the user presses one button, indicating that the main unit has received the signal and is functioning normally. If the beeper doesn't sound, the main unit has not received the signal. Please adjust the remote control direction and press the button again.

In case of a power outage during nozzle spraying, the wand will remain extended until the power is turned back on. In case of a long power outage, you may softly push the wand in manually. Make sure to push the nozzle very gently to avoid damage to the wand.



Questions?

+1 800 460 7019

help@sustainable-solutions.com

[sustainable-solutions.com](https://www.sustainable-solutions.com)