

SSI



NO CLOG II
 0.8 gpf (3.0 lpf)
 Easy Height Round Front
 & Elongated Bowl and tank
 with Side Lever Handle
 RF Bowl #301401
 ELG Bowl #301402
 LH Lever Tank #301400
 RH Lever Tank #301400-R
 Vitreous China Single Flush
 High Efficiency (HET)

PLUMBER'S INSTALLATION INSTRUCTIONS. PLEASE READ CAREFULLY BEFORE INSTALLATION.

Rough in:

It is essential for the installation of the SSI No Clog II 0.8 gpf (3.0 lpf) Two Piece Washdown toilet that the closet flange be accurately set out from the finished wall as detailed in Fig.3.

IMPORTANT:

A reducing wax bowl ring MUST NOT be used when installing this toilet bowl, as detailed in Fig.2.

Working Water Pressure:

USA & Canada: Recommended working water pressure is 20-80psi (140-550Kpa).

Closet Bowl Fixing Procedure:

- 1- Position 'T' bolts into closet flange, as detailed in Fig.3.
- 2- Ensure that the area around the closet bowl is clean and free from building material.
- 3- Position wax bowl ring onto closet flange.
- 4- Accurately align the closet bowl over the closet flange and lower into position.
- 5- Secure Closet bowl by hand tightening nuts and washers onto the 'T' bolts. Apply an additional 1/2 turn for final installation. Cover with the supplied fixing caps.
- 6- It is recommended that a bead of silicone caulking is applied fully around base of the closet bowl.
- 7- Remove any excess silicone caulking.

Tank Fixing Procedure:

- 1- Ensure that the foam seal is fitted onto the tail piece on the underside of the tank, as detailed in Fig.4.
- 2- Lower tank onto closet bowl, allowing the two tank fixing bolts protruding below the tank to fit through the corresponding holes in the closet bowl.
- 3- Fit the plastic wing nuts provided onto the tank fixing bolts which are protruding through the closet bowl and gradually tighten the left and right hand nuts by hand to evenly secure tank to closet bowl.
- 4- Determine type of water supply connection.
 Note: The tapered rubber seal and wing nut assembled at inlet valve connection end is a 3/8" hard tube/pipe connection. Remove them if a braided toilet supply line connector is used.
- 5- Connect water supply to inlet valve connection end and check operation.

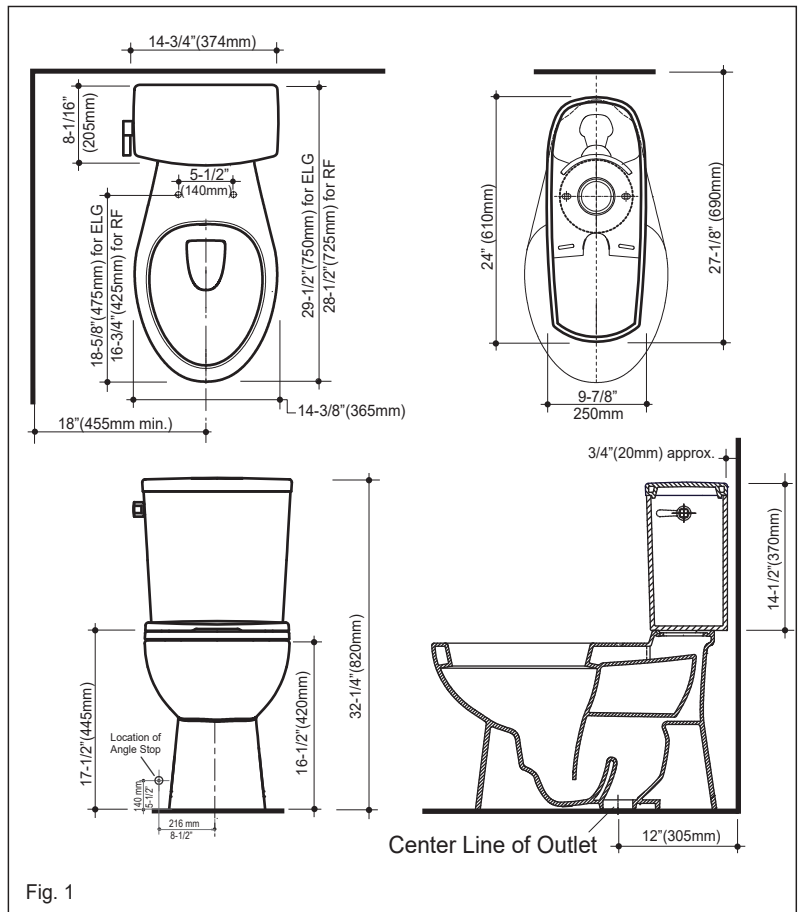


Fig. 1

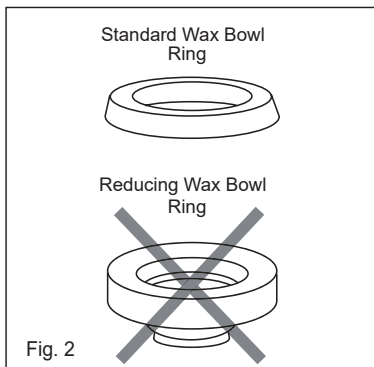


Fig. 2

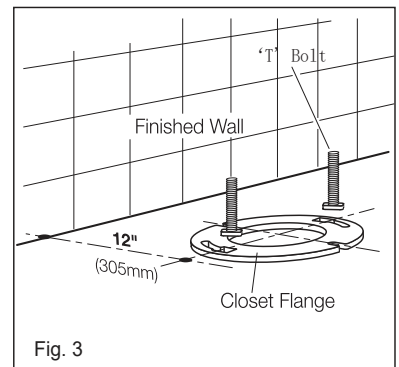


Fig. 3

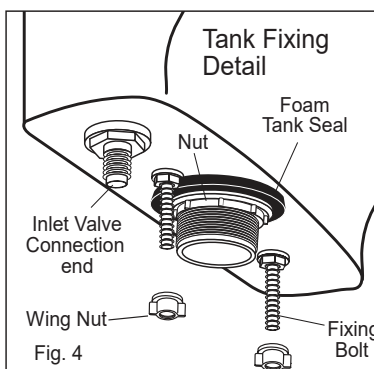


Fig. 4



HIGH EFFICIENCY TOILET
HET



MaP
 PREMIUM

All measurements are subject to accepted manufacturing tolerances. To ensure complete accuracy please check actual product dimensions before drilling for installation.

The manufacturer reserves the right to change specifications at any time without giving prior notification.

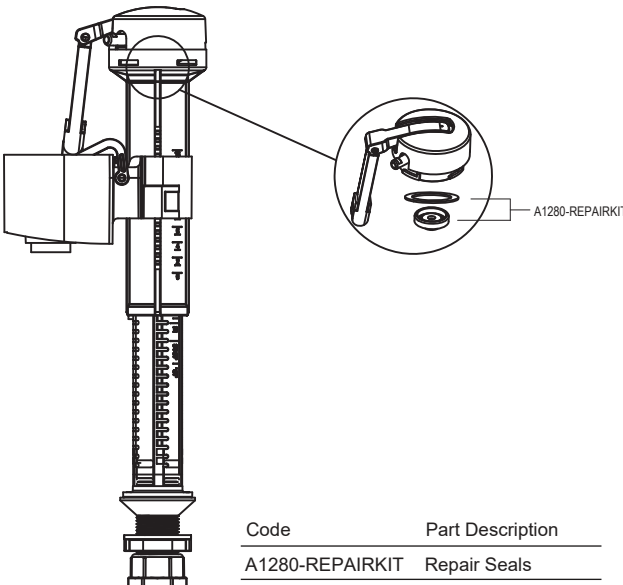
This product should be installed by a qualified plumber. Local authority, Water Board, and Building Regulations may apply to the installation of this product, and you should consult the appropriate bodies on these requirements. Failure to comply may invalidate the product warranty.

For further information please visit our website
www.sustainable-solutions.com

SSI NO CLOG II 0.8 gpf (3 lpf)
 Easy Height Round Front & Elongated
 Bowl and Tank with Side Lever
 RF Bowl #301401 ELG Bowl #301402
 LH Lever Tank #301400 RH Lever Tank #301400-R

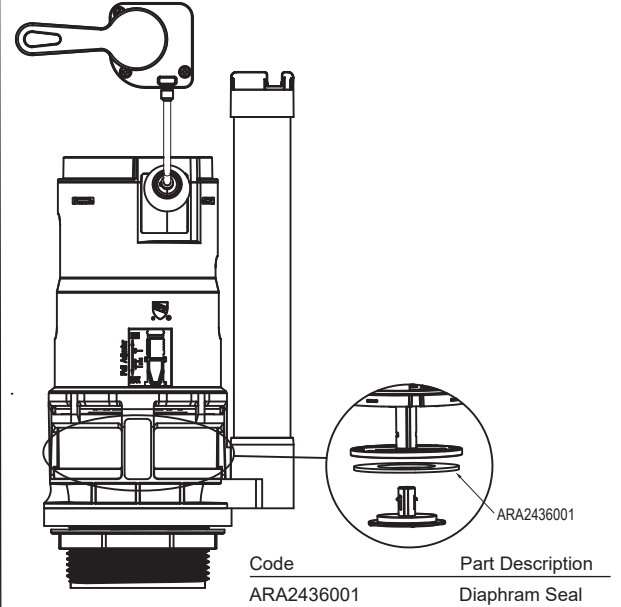
Tank Spare Parts

Inlet Valve Replacement Parts



Code	Part Description
A1280-REPAIRKIT	Repair Seals
A1280	Inlet Valve

Outlet Valve Replacement Parts



Code	Part Description
ARA2436001	Diaphragm Seal
A2436	Outlet Valve
A2436060300-C	Left Hand Lever
A2436060400-C	Right Hand Lever

CLEANING INSTRUCTIONS FOR VITREOUS CHINA:

To preserve the glazed surface, this toilet should be cleaned only with a mild household detergent or warm soapy water. Do not use any abrasive cleaners in the tank or bowl as this can damage the glazing. Use of in tank cleaners or bleach tablets may void warranty.



For spare parts contact:

**Sustainable
Solutions**

Designed and Manufactured by SSI Sustainable Solutions
 Los Angeles, CA + Vancouver, BC

Telephone: (604) 430.2020
 Fax: (604) 430.5050
 Toll Free: (800) 460.7019
help@sustainablesolutions.com
www.sustainablesolutions.com