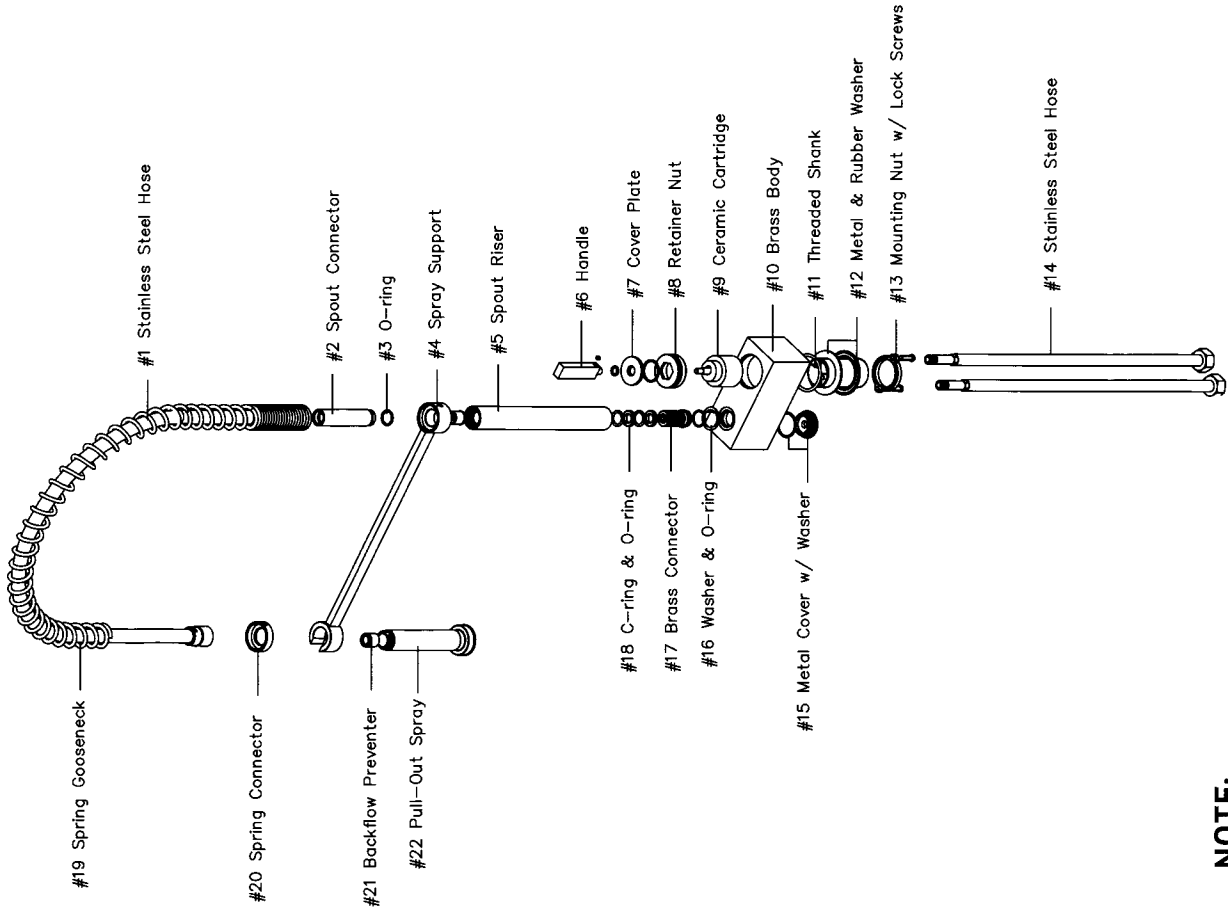


Tools Required for Installation

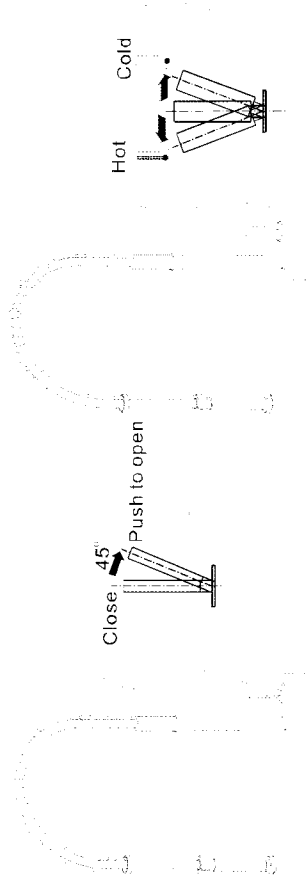
- Adjustable Wrench
- Screwdriver
- Teflon Tape



Installation Instructions

1. Shut off water supply. Remove old faucet and clean sink surface. Plug sink drain to prevent any loss of faucet parts.
2. Lead stainless steel hoses (#14) through faucet hole, and insert threaded shank (#11) into faucet hole.
3. Position faucet body, and from under the sink, assemble rubber washer, metal washer (#12) and tighten mounting nut (#13) onto threaded shank (#11).
4. Firmly tighten lock screws (#13) to metal washer.
5. Connect water supplies. Hot to left side.

Operation Instructions



Care & Maintenance Instructions

SSI products are designed and engineered under strict quality standards. Regular and proper care of our products will ensure years of trouble-free service.

For Cartridge:

1. Start off cold and hot water supply.
2. Loosen set screw with an allen wrench, but do not remove it, then pull out handle (#6).
3. Take off cover plate (#7), unscrew and remove retainer nut (#8).
4. Remove the cartridge (#9).
5. Wash the cartridge (#9) with clean running

water and ensure that any trapped debris have been removed. Dry and lightly grease the seats (only use NSF approved silicone grease).

6. Replace the cartridge (#9) the retaining nut (#8), the cover plate (#7) followed by the handle (#6).

For Surface Finish:

- To clean, use a soft and damp cloth with warm soapy water followed by rinsing with clean water and drying with a soft cloth. Do not use abrasive or harsh cleaners as they may result in finish damage.

NOTE:

Thickness of Sink or countertop can not exceed 2-1/8" (55mm)