

North America
Price List
June 2011

Helping preserve
the world's most
valuable resource - water

Caroma: conservation with proven performance



Saving water at the touch of a button



The bowls listed below are interchangeable with the three Caroma tank types listed.

Caroma bowls
270 Round Front Plus
270 Easy Height Round Front Plus
305 Round Front Plus
270 Elongated
270 Easy Height Elongated
305 Elongated

Caroma tanks
Bondi
Sydney Low Profile
Sydney Smart

Caroma Round Front Plus bowls are longer than traditional Round Front bowls. Distance from seat bolt holes to front of rim is 16 1/2 to 17 1/8"

Caroma Elongated bowls are 18 1/2" from seat bolt holes to front of rim.

Table of Contents

Toilets.....	2
Adelaide series.....	2
Bondi series.....	4
Brisbane series.....	6
Caravelle series (one piece).....	7
Profile Smart series.....	8
Somerton Smart series.....	9
Sydney Low Profile series.....	10
Sydney Smart back outlet.....	12
Sydney Smart series (one piece).....	13
Sydney Smart series (two piece).....	14
Invisi In-Wall Wall Hung System.....	16
Toilet seats.....	18
Basins	
Leda Vasque series.....	20
Liano series.....	21
Sydney series.....	22
Showerheads.....	23
Urinals.....	24
Spare parts.....	25
Spare parts drawings.....	32
Warranty.....	38
Conditions of sale.....	39

Product	Description	Code	Weight (lbs)	List Price
---------	-------------	------	--------------	------------

Adelaide Cube 270
Round Front Plus



1.6/0.8 gallon two button dual flush toilet, large fully-concealed trapway, 10" to 12" adjustable rough-in

White tank, bowl, and seat

Adelaide Cube tank	814790W	29	\$241
Adelaide 270 bowl	834000W	66	\$299
Adelaide seat	813306W	6	\$81

Adelaide Cube 270
Easy Height
Round Front Plus



1.6/0.8 gallon two button dual flush toilet, large fully-concealed trapway, 16.5" high bowl, 10" to 12" adjustable rough-in

White tank, bowl, and seat

Adelaide Cube tank	814790W	29	\$241
Adelaide 270 Easy Height bowl	825500W	66	\$335
Adelaide seat	813306W	6	\$81

Image of Adelaide Cube 270 Round Front Plus.

Optional extras for Adelaide tank



Anti-vandal kit for M5 valve	750109		\$11
Anti-vandal kit for Hi-Flow valve	800106		\$11
Raised buttons (white)	416020W		\$14

Product	Description	Code	Weight (lbs)	List Price
---------	-------------	------	--------------	------------

Adelaide Standard 270
Round Front Plus



1.6/0.8 gallon two button dual flush toilet, large fully-concealed trapway, 10" to 12" adjustable rough-in

White tank, bowl, and seat			104	\$612
Adelaide Standard tank	814328W		32	\$232
Adelaide 270 bowl	834000W		66	\$299
Adelaide seat	813306W		6	\$81

Adelaide Standard 270
Easy Height
Round Front Plus



1.6/0.8 gallon two button dual flush toilet, large fully-concealed trapway, 16.5" high bowl, 10" to 12" adjustable rough-in

White tank and bowl			104	\$648
Adelaide Standard tank	814328W		32	\$232
Adelaide 270 Easy Height bowl	825500W		66	\$335
Adelaide seat	813306W		6	\$81

Image of Adelaide Standard 270 Round Front Plus.

Optional extras for Adelaide tank



Anti-vandal kit for M5 valve	750109			\$11
Anti-vandal kit for Hi-Flow valve	800106			\$11
Raised buttons (white)	416020W			\$14

Product	Description	Code	Weight (lbs)	List Price
---------	-------------	------	--------------	------------

Bondi 270
Round Front Plus



1.6/0.8 gallon two button dual flush toilet, large fully concealed trapway, 10" to 12" adjustable rough-in

White tank and bowl			86	\$417
Bondi tank	726350W		35	\$198
270 bowl	609159W		51	\$219

Bondi 270 Easy
Height Round Front Plus



1.6/0.8 gallon two button dual flush toilet, large fully concealed trapway, 17" high bowl, 10" to 12" adjustable rough-in

White tank and bowl			96	\$502
Bondi tank	726350W		35	\$198
270 Easy Height bowl	609177W		61	\$304

Bondi 305
Round Front Plus



1.6/0.8 gallon two button dual flush toilet, large trapway, 12" rough-in

White tank and bowl			89	\$397
Bondi tank	726350W		35	\$198
305 Bowl	609151AW		54	\$199

Optional extras for Bondi tank



Anti-vandal kit for M5 valve	750109			\$11
Anti-vandal kit for Hi-Flow valve	800106			\$11
Raised buttons (white)	416020W			\$14

Refer to page 18 for recommended Round Front Plus seats

Product	Description	Code	Weight (lbs)	List Price
---------	-------------	------	--------------	------------

Bondi 270
Elongated



1.6/0.8 gallon two button dual flush toilet, large fully concealed trapway, elongated bowl, 10" to 12" adjustable rough-in

White tank and bowl			90	\$497
Bondi tank	726350W		35	\$198
270 elongated bowl	609100W		55	\$299

Bondi 270 Easy Height
Elongated



1.6/0.8 gallon two button dual flush toilet, 17" high elongated bowl, 10" to 12" adjustable rough-in

White tank and bowl			96	\$517
Bondi tank	726350W		35	\$198
270 EH elongated bowl	609120W		61	\$319

Shown in standard height

Bondi 305
Elongated



1.6/0.8 gallon two button dual flush toilet, large fully concealed trapway, elongated bowl, 12" rough-in

White tank and bowl			90	\$506
Bondi tank	726350W		35	\$198
305 elongated bowl	609130W		55	\$308

Optional extras for Bondi tank



Anti-vandal kit for M5 valve	750109			\$11
Anti-vandal kit for Hi-Flow valve	800106			\$11
Raised buttons (white)	416020W			\$14

Refer to page 19 for recommended Elongated seats

Product	Description	Code	Weight (lbs)	List Price
---------	-------------	------	--------------	------------

Brisbane 270
Round Front Plus



1.6/0.8 gallon two button dual flush toilet, large fully-concealed trapway, 10" to 12" adjustable rough-in

Tank, bowl, and seat

Brisbane tank

810266W

111

\$810

Brisbane 270 bowl

833900W

29

\$253

Brisbane seat

301033W

77

\$427

5

\$130

Optional extras for Brisbane tank



Anti-vandal kit for M5 valve

750109

\$11

Anti-vandal kit for Hi-Flow valve

800106

\$11

Raised buttons (white)

416020W

\$14

Product	Description	Code	Weight (lbs)	List Price
---------	-------------	------	--------------	------------

Caravelle One Piece Round Front Plus



One piece, 1.6/0.8 gallon two button dual flush toilet, large fully concealed trapway, 10" to 12" adjustable rough-in

One piece toilet, white	989646W	92	\$639
-------------------------	---------	----	-------

Refer to page 18 for recommended Round Front Plus seats.

Caravelle One Piece Easy Height Round Front Plus



One piece, 1.6/0.8 gallon two button dual flush toilet, large fully concealed trapway, 16.5" high bowl, 10" to 12" adjustable rough-in

White tank and bowl	989668W	99	\$679
---------------------	---------	----	-------

Refer to page 18 for recommended Round Front Plus seats.

Product	Description	Code	Weight (lbs)	List Price
---------	-------------	------	--------------	------------

Profile Smart 270
Easy Height Elongated



1.28/0.8 gallon two button dual flush toilet with integrated rinse station, large trapway, 10"-12" adjustable rough-in, 17" high elongated bowl

White tank and bowl			103	\$815
Profile Smart tank	840420W		42	\$496
270 EH Elongated Bowl	609120W		61	\$319

Please refer to page 19 for recommended elongated seats.

Profile Smart 305
Round Front Plus



1.28/0.8 gallon two button dual flush toilet with integrated rinse station, large trapway, 12" rough-in

White tank and bowl			96	\$695
Profile Smart tank	840420W		42	\$496
305 Bowl	609151AW		54	\$199

Please refer to page 18 for recommended round front seats.

Profile Smart features

Dual flush high efficiency toilet 1.28/0.8 gallons (4.8/3 liters) per flush (full flush/half flush)

Integrated rinse station for enhanced water savings

After flushing, fresh cold water is directed through the faucet for hand washing and drains into the tank to be used for the next flush

Chrome buttons built-in to faucetry design

Available in Q4 2011

Product	Description	Code	Weight (lbs)	List Price
---------	-------------	------	--------------	------------

Somerton Smart 270
Easy Height
Round Front Plus



1.28/0.8 gallon two button dual flush toilet, large fully concealed trapway, 16.5" high Round Front Plus bowl, 10" to 12" adjustable rough-in, undergoing WaterSense labeling, ADA compliant

White tank and bowl			92	\$566
Somerton Smart tank	810788W		24	\$184
270 EH Round Front Plus bowl	829088W		68	\$382

Refer to page 18 for recommended Round Front Plus seats.

Somerton Smart 270
Easy Height Elongated



1.28/0.8 gallon two button dual flush toilet, large fully concealed trapway, 16.5" high elongated bowl, 10" to 12" adjustable rough-in, undergoing WaterSense labeling, ADA compliant

White tank and bowl			94	\$581
Somerton Smart tank	810788W		24	\$184
270 EH elongated bowl	829108W		70	\$397

Refer to page 19 for recommended Elongated seats.

Product	Description	Code	Weight (lbs)	List Price
---------	-------------	------	--------------	------------

Sydney Low Profile 270
Round Front Plus



1.6/0.8 gallon two button dual flush toilet, Sydney low profile tank to fit under extended "banjo" countertops, large fully concealed trapway, 10" to 12" adjustable rough-in

White tank and bowl			76	\$434
Sydney tank	622330W		25	\$215
270 bowl	609159W		51	\$219

Sydney Low Profile 270
Easy Height
Round Front Plus



1.6/0.8 gallon two button dual flush toilet, Sydney low profile tank to fit under extended "banjo" countertops and ADA grab bar installations, large fully concealed trapway, 17" high bowl, 10" to 12" adjustable rough-in

White tank and bowl			86	\$519
Sydney tank	622330W		25	\$215
270 Easy Height bowl	609177W		61	\$304

Sydney Low Profile 305
Round Front Plus



1.6/0.8 gallon two button dual flush toilet, Sydney low profile tank to fit under extended "banjo" countertops, large trapway, 12" rough-in

White tank and bowl			79	\$414
Sydney tank	622330W		25	\$215
305 Bowl	609151AW		54	\$199

Optional extras for Sydney Low Profile tank

Anti-vandal kit for M5 valve	750110			\$11
Raised buttons (white only)	405068W			\$19

Refer to page 18 for recommended Round Front Plus seats

Product	Description	Code	Weight (lbs)	List Price
---------	-------------	------	--------------	------------

Sydney Low Profile 270
Elongated



1.6/0.8 gallon two button dual flush toilet, Sydney low profile tank to fit under extended "banjo" countertops, large fully concealed trapway, 10" to 12" adjustable rough-in

White tank and bowl			80	\$514
Sydney tank	622330W		25	\$215
270 elongated bowl	609100W		55	\$299

Sydney Low Profile 270
Easy Height Elongated



1.6/0.8 gallon two button dual flush toilet, Sydney low profile tank to fit under extended "banjo" countertops and ADA grab bar installations, large fully concealed trapway, 17" high bowl, 10" to 12" adjustable rough-in

White tank and bowl			86	\$534
Sydney tank	622330W		25	\$215
270 Easy Height elongated bowl	609120W		61	\$319

Standard height bowl shown

Sydney Low Profile 305
Elongated



1.6/0.8 gallon two button dual flush toilet, Sydney low profile tank to fit under extended "banjo" countertops, large trapway, 12" rough-in

White tank and bowl			80	\$523
Sydney tank	622330W		25	\$215
305 elongated bowl	609130W		55	\$308

Optional extras for Sydney Low Profile tank

Anti-vandal kit for M5 valve	750110			\$11
Raised buttons (white only)	405068W			\$19

Refer to page 19 for recommended Elongated seats

Product	Description	Code	Weight (lbs)	List Price
---------	-------------	------	--------------	------------

Sydney Smart
Back Outlet



1.28/0.8 gallon two button dual flush toilet, rear discharge, large fully concealed trapway, 4" rough-in

White tank and bowl			84	\$674
Sydney Smart tank	622322W		39	\$195
Back outlet bowl	609450W		45	\$449
Back outlet bowl connector	M1464020			\$30

Please refer to pages 18 for recommended seats.

Optional extras for Sydney Smart tank



Anti-vandal kit for M5 valve	750109			\$11
Raised buttons (white only)	405067W			\$17

Available in Q3 2011

Product	Description	Code	Weight (lbs)	List Price
---------	-------------	------	--------------	------------

Sydney Smart 305
One Piece Easy Height
Round Front Plus



One piece toilet, 1.28/0.8 gallon two button dual flush toilet, large trapway, 16.5" high bowl, 12" rough-in, undergoing WaterSense labeling, ADA compliant

One piece toilet, white	828808W	75	\$495
-------------------------	---------	----	-------

Sydney Smart 305
One Piece Easy Height
Elongated



One piece, 1.28/0.8 gallon two button dual flush toilet, large trapway, 16.5" high bowl, 12" rough-in, undergoing WaterSense labeling, ADA compliant

One piece toilet, white	828908W	77	\$528
-------------------------	---------	----	-------

Optional extras for Sydney Smart tank



Anti-vandal kit for M5 valve	750109	\$11
Raised buttons (white only)	405067W	\$17
Refer to page 18-19 for recommended seats		

Product	Description	Code	Weight (lbs)	List Price
---------	-------------	------	--------------	------------

Sydney Smart 270 Round Front Plus



1.28/0.8 gallon two button dual flush toilet, large fully concealed trapway, 10" to 12" adjustable rough-in

White tank and bowl			90	\$414
Sydney Smart tank	622322W		39	\$195
270 bowl	609159W		51	\$219

Sydney Smart 270 Easy Height Round Front Plus



1.28/0.8 gallon two button dual flush toilet, large fully concealed trapway, 17" high bowl, 10" to 12" adjustable rough-in

White tank and bowl			100	\$499
Sydney Smart tank	622322W		39	\$195
270 Easy Height bowl	609177W		61	\$304

Sydney Smart 305 Round Front Plus



1.28/0.8 gallon two button dual flush toilet, large trapway, 12" rough-in

White tank and bowl			93	\$394
Sydney Smart tank	622322W		39	\$195
305 Bowl	609151AW		54	\$199

Optional extras for Sydney Smart tank



Anti-vandal kit for M5 valve	750109			\$11
Raised buttons (white only)	405067W			\$17

Refer to page 18 for recommended Round Front Plus seats

Product	Description	Code	Weight (lbs)	List Price
---------	-------------	------	--------------	------------

Sydney Smart 270
Elongated



1.28/0.8 gallon two button dual flush toilet, large fully concealed trapway, elongated bowl, 10" to 12" adjustable rough-in

White tank and bowl			94	\$494
Sydney Smart tank	622322W		39	\$195
270 elongated bowl	609100W		55	\$299

Sydney Smart 270
Easy Height Elongated



1.28/0.8 gallon two button dual flush toilet, large fully concealed trapway, 17" high elongated bowl, 10" to 12" adjustable rough-in

White tank and bowl			100	\$514
Sydney Smart tank	622322W		39	\$195
270 EH elongated bowl	609120W		61	\$319

Sydney Smart 305
Elongated



1.28/0.8 gallon two button dual flush toilet, large fully concealed trapway, elongated bowl, 12" rough-in

White tank and bowl			94	\$503
Sydney Smart tank	622322W		39	\$195
305 elongated bowl	609130W		55	\$308

Optional extras for Sydney Smart tank

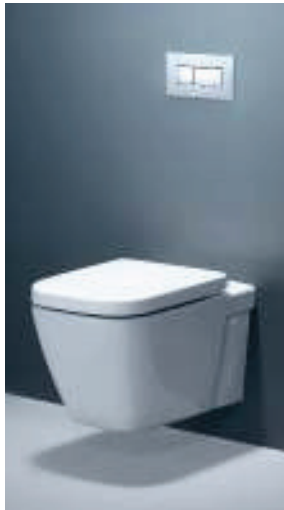


Anti-vandal kit for M5 valve	750109			\$11
Raised buttons (white only)	405067W			\$17
Refer to page 19 for recommended Elongated seats				

Available in Q1 2011

Product	Description	Code	Weight (lbs)	List Price
---------	-------------	------	--------------	------------

Cube Invisi™ Series II
Wall Hung In-Wall
System



Invisi Series II... Invisible by design with the tank hidden behind the wall for maximization of valuable floor space and cleanability. Features a high-performance 1.28/0.8 gpf dual flush system. Available in standard in-wall tank or undercounter tank installations

Cube Invisi				
Cube universal bowl	604300W	57	\$578	
Option 1: Tank, wall-hung carrier, and connector for in-wall, in-duct, or in-ceiling installations	237061	32	\$831	
Option 2: In-wall tank, carrier and connector for under-counter installations	237062	33	\$837	
Cube soft close seat	300024W	7	\$119	

See page 17 for button kit options

Walvit Invisi Series II
Wall Hung In-Wall
System









Tank hidden behind the wall for maximization of valuable floor space and cleanability. Features a high-performance 1.28/0.8 gpf dual flush system. Available in standard in-wall tank or undercounter tank installations

Walvit Invisi				
Walvit elongated bowl	604119W	33	\$372	
Option 1: Tank, wall-hung carrier, and connector for in-wall, in-duct, or in-ceiling installations	237061	32	\$831	
Option 2: In-wall tank, carrier and connector for under-counter installations	237062	33	\$837	

See page 17 for button kit options
See page 19 for elongated seat options

Optional extras for Invisi systems

Remote mounting box kit (for remote mounted buttons or induct)	237006		\$49
4M pneumatic hose	237702		\$13

Product	Description	Code	Weight (lbs)	List Price
	Round dual flush custom mount buttons	237013C (chrome)	1	\$52
		237013S (satin)	1	\$62
	Round dual flush plate and buttons	237010W (white)	1	\$42
		237010C (chrome)	1	\$62
		237010S (satin)		\$76
	ADA dual flush plate and raised buttons	237011C (chrome)	1	\$64
		237011S (satin)	1	\$78
	Rectangular dual flush custom mount buttons	237023C (chrome)	1	\$53
		237023S (satin)	1	\$72
	Blank access panel	237024C (chrome)	1	\$91
		237024S (satin)	1	\$102
	Metal rectangular dual flush plate and buttons	237020C (chrome)	1	\$166
		237020S (satin)	1	\$169

Product	Description	Code	Weight (lbs)	List Price
---------	-------------	------	--------------	------------

Easy Closing



A soft-closing seat designed to fit all Caroma Round Front Plus bowls.

White 326222W 5 \$61

Detachable



A snap-on/off detachable seat for easy cleaning. Fits all Caroma Round Front Plus bowls.

White 301032W 5 \$59

Standard



A heavy-duty seat designed to fit all Caroma Round Front Plus bowls.

White 326707W 5 \$39

Product	Description	Code	Weight (lbs)	List Price
---------	-------------	------	--------------	------------

Easy Closing Elongated



A soft-closing seat designed to fit Caroma Elongated bowls.




White	326221W	5	\$59
-------	---------	---	------

Elongated



An elongated seat designed to fit Caroma Elongated bowls.

White	326307W	5	\$46
-------	---------	---	------

Product	Description	Code	Weight (lbs)	List Price
Leda Vasque Above Counter				
	17" round White	651048W	17	\$234
Leda Vasque Inset				
	17" round White	661048W	17	\$234
Leda Vasque Semi-Recessed				
	17" round White	661148W	17	\$234

Product	Description	Code	Weight (lbs)	List Price
---------	-------------	------	--------------	------------

Liano Above Counter



16 1/2" x 18 1/2"

NTH, white	664408W	31	\$348
1TH, white	664418W	31	\$348
3TH 8" center, white	664438W	31	\$348

Liano Self-Rimming



16 3/8" square

1TH, white	664718W	31	\$315
3 hole 8" center, white	664738W	31	\$315

Liano Semi-Recessed



16 1/2" x 18 1/2" x 5 5/16"

1TH, white	661218W	31	\$350
3 hole 8" center, white	661238W	31	\$350

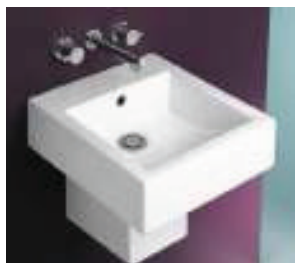
Liano Under Counter



17" square


NTH, white (1760 bracket included)	664208W	21	\$185
---------------------------------------	---------	----	-------

Liano Wall Mount



16 1/2" x 18 1/2"

NTH, white	649308W	31	\$338
1TH, white	649318W	31	\$338
3 hole 8" center, white	649338W	31	\$338
Optional: Shroud, white	812268W	17	\$148

Product	Description	Code	Weight (lbs)	List Price
Sydney Self-Rimming	20 1/4" x 17 1/8"			
	1TH, white	685018W	16	\$65
	3 hole 4", white	685037W	16	\$65

Sydney Under Counter



18 7/8" x 16"				
NTH, white	685108W	16	\$65	

Available in Q1 2011

Product	Description	Code	Weight (lbs)	List Price
---------	-------------	------	--------------	------------

Caroma Flow



Wide coverage spray

High efficiency showerhead with nominal flow rate of 1.5 gallons per minute/5.7 liters per minute

90222C


1


\$47

- Precision-engineered nozzle pressurizes water to produce a uniform spray of soft water droplets
- Incorporates a unique easy-slide spray adjustment for wide coverage spray to concentrated rinse flow with heavier droplets
- Easy to install in both retrofit and new construction



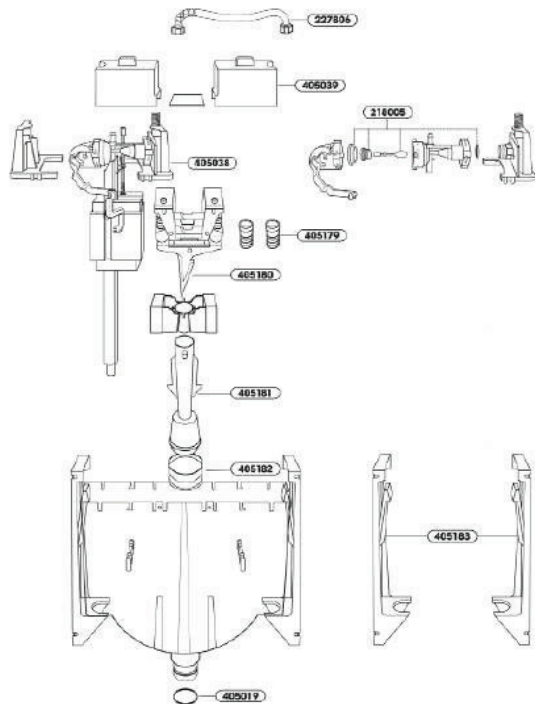
Concentrated rinse flow

Product	Description	Code	Weight (lbs)	List Price
H ₂ Zero Waterless				
	Waterless urinal, Bio Seal™ (one-way air-tight valve to seal the cartridge from the drainage system and against back-pressure situations - blocking sewer gases), liquid-free valve improves maintenance and allows for daily rinse with water, uses Bio Fresh deodorizing block			
	H ₂ Zero waterless urinal, white (includes Bio Seal and Bio Block)	678505W	48	\$658
	H ₂ Zero service kit with Bio Seal and Bio Block	687334	2	\$99.50

Description	Code	Weight (lbs)	List Price	
Walvit and water wafer tank spare parts				
	Walvit Elongated bowl, white Walvit Round Front Plus bowl, white (special order only)	604119W 604118W	51 46	\$360 \$320
	Water wafer tank MK3	227006	6	\$204
	D715 Sanifix carrier bracket	687715	45	\$560
	All thread fixing pack for D715	687812	1	\$37
	Wall hung bowl 90-degree uniconnector	414260		\$51
	Water wafer MK3 large panel dual flush	227147ST		\$338
	Water wafer MK3 compact panel kit - dual flush	227124ST		\$244
	Water wafer MK3 remote panel kit - dual flush	227127ST		\$166
	Water wafer MK3 compact blank panel kit	227126ST		\$112
	Water wafer MK3 compact panel and button kit - dual flush disabled	227129ST		\$249
	Water wafer MK3 custom mount buttons - satin	227134S		\$57
	Water wafer MK3 custom mount buttons - chrome	227134C		\$51
	Water wafer long pneumatic tube for remote button installation (includes two lengths of 13' hose)	227109		\$26
	Flush pipe and Kee seal kit	227031		\$10

Description		Code	List Price
Walvit and water wafer tank spare parts (continued)	Tank tail copper adapter	227136	\$25
	Vent elbow connector	415233	\$9
	63mm panel screws	227493	\$1.25
	Full flush std button, satin	227296S	\$38
	Half flush std button, satin	227297S	\$38
	Full flush std button, white	227296W	\$38
	Half flush std button, white	227297W	\$38
	Full flush raised button, satin	228230S	\$35
	Half flush raised button, satin	228231S	\$35
	50mm inlet Kee seal	234301	\$5
	Push button seal kit	405178	\$10

Water wafer spare parts



Quietflow spare parts pack	218005	\$8
Flexible hose 1/2" BSP	227806	\$14
Tail "O" ring	405019	\$4
Complete MK3 inlet valve	405038	\$40
Dust cover set	405039	\$12
Slave bellows kit	405179	\$12
Operating mechanism (includes bellows #405179)	405180	\$14
Outlet valve and seal	405181	\$8
Outlet valve seal	405182	\$6
Mounting bracket set	405183	\$13

Description	Code	List Price
Inlet valve, Caravelle One Piece	218259	\$20
Slimline button springs	242401	\$1.50
Overflow ring, chrome	323218C	\$5
Outlet valve seal for DuoFlo valves	405006	\$6
Raised button and bezel kit (white) for Caravelle two piece, Royale, and Sydney toilet ranges (excluding Sydney Low Profile)	405067W	\$17
Raised button and bezel kit: Sydney Low Profile (white)	405068W	\$19
Fixing bolts for detachable seat #301032	405142	\$5
Blind fixing kit for seat #301032	405144	\$17
Button and bezel kit (white)	405167W	\$13
Bezel clamp and screw	412122	\$7
Duo flow + Hi-Flow vandal resistant kit	413276	\$9
Hi-Flow button extender	414278	\$3
Chrome button kit	415026C	\$13
Hi-Flow outlet valve, Royale	415042	\$26
Hi-Flow outlet valve, Caravelle and Colonial	415043	\$26
Hi-Flow outlet valve, Sydney	415047	\$26
Hi-Flow outlet valve, Adelaide and Bondi	415056	\$26
10" to 12" offset connector for 270 bowls and Caravelle One Piece	415245	\$18
Hi-Flow outlet valve spare parts kit (replaces 415110)	415297	\$10
Raised button and bezel kit: Adelaide, Bondi, and Brisbane (white)	416020W	\$14

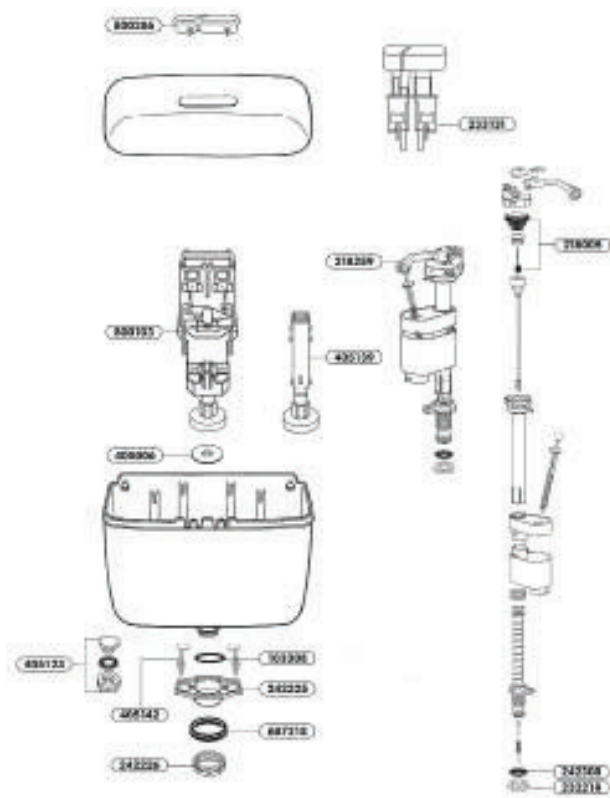
Description	Code	List Price
Button and bezel kit: Sydney Low Profile (white)	416278W	\$15
Sydney Smart button and bezel kit (white)	416283W	\$15
Bowl fixing kit for all 270 fully skirted bowls White	601150W	\$12
Cube ³ urinal grate	686070W	\$13
D200 brackets for wall hung lavatories	687005	\$15
D157 brackets for self-rimming lavatories	687017	\$8
Quietflow 2 bottom inlet repair kit	687040	\$17
Button kit, older model Caravelle One Piece	687052	\$27
Button actuating rods, older model Caravelle One Piece	687053	\$6
Quietflow 2 inlet valve	687144	\$29
Outlet valve, older model Caravelle One Piece	687152	\$70
D153A brackets for under counter lavatories	687153	\$18
Royale lid (white)	687173W	\$32
Reflections lid (white)	687178W	\$32
Caravelle lid (white)	687179W	\$32
Colonial lid (white)	687184W	\$32
D250 brackets for semi-recessed lavatories	687186	\$21
Tank tail seal - 2000 Series	687205	\$7
Tank to bowl foam seal	687214	\$10
Tank to bowl fixing kit	687240	\$10
Outlet valve seal for WD04900P	687242	\$6
Bolt caps and washer kit for 305 bowls - White	687243W	\$5

Description	Code	List Price
Plug/washer/nut pack (replaces 405123)	687256	\$4
Button and bezel kit: Colonial	687266	\$20
H ₂ Zero replacement service kit	687334	Call for pricing
H ₂ Zero waste connector bracket	687339	\$15
H ₂ Zero replacement Bio seal	687340	Call for pricing
H ₂ Zero replacement Bio block	687341	Call for pricing
D400 H ₂ Zero mounting bracket	687402	\$30
Older model Caravelle One Piece lid, white (buttons not included)	687632W	\$61
Current model Caravelle One Piece tank lid, white	687637W	\$30
Sydney Low Profile lid (white)	687660W	\$29
Sydney Smart lid (white)	687660W	\$29
Bondi lid (white)	687661W	\$29
Adelaide Cube lid (white)	687662W	\$30
Adelaide Standard lid (white)	687663W	\$30
Brisbane lid (white)	687684W	\$30
Operating buttons, Profile Smart	687850C	Call for pricing
Spout kit (spout, aerator and nut), Profile Smart	687852C	Call for pricing
Tube and clamp kit, Profile Smart	687853	Call for pricing
Basin outlet cover and fixing kit, Profile Smart	687856	Call for pricing
Quietflow 2 inlet valve, Profile Smart	687880	\$29
Outlet valve seal for 687152 and M5 valves	750017	\$5
M5 vandal resistant kit	750109	\$11

Description	Code	List Price
M5 vandal resistant kit, Sydney Low Profile	750110	\$11
M5 vandal resistant kit, Profile Smart	750209	\$11
M5 outlet valve, Sydney Low Profile	750232	\$30
M5 outlet valve, Sydney	750284	\$30
M5 outlet valve, Bondi	750285	\$30
M5 outlet valve, Caravelle and Reflections	750289	\$30
M5 outlet valve, Royale	750290	\$30
M5 outlet valve, Adelaide Standard	750292	\$30
M5 outlet valve, Adelaide Cube	750293	\$30
M5 outlet valve, Sydney Smart	750297	\$30
M5 outlet valve, Brisbane	750298	\$30
M5 outlet valve, Colonial	750299	\$30
M5 outlet valve, Profile Smart	750779	\$30
Duo flow and Hi-Flow vandal resistant kit for Adelaide, Bondi, and Brisbane	800106	\$11
Back outlet bowl connector	M146420	\$49
Current model Caravelle One Piece outlet valve	WD04900P	\$30
Current model Caravelle One Piece button kit	WD05502C	\$28
Current model Caravelle One Piece inlet valve	WD3121US	\$29

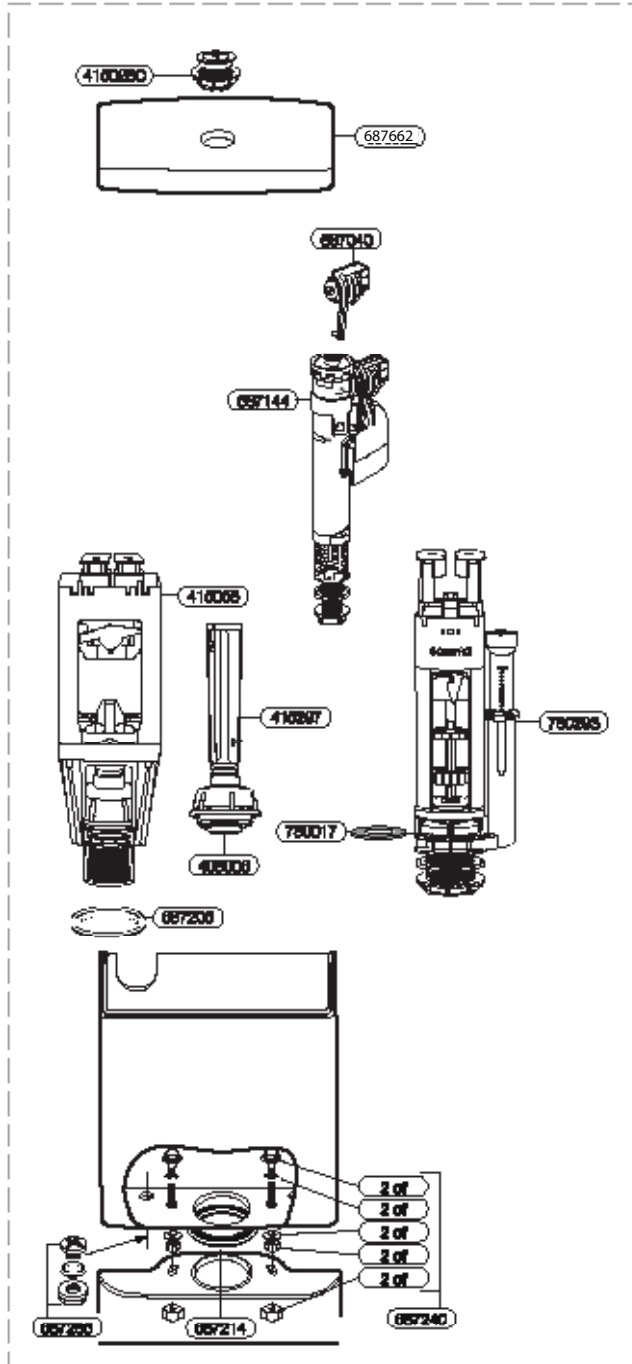
Description	Code	List Price
-------------	------	------------

Parts for Tasman tanks

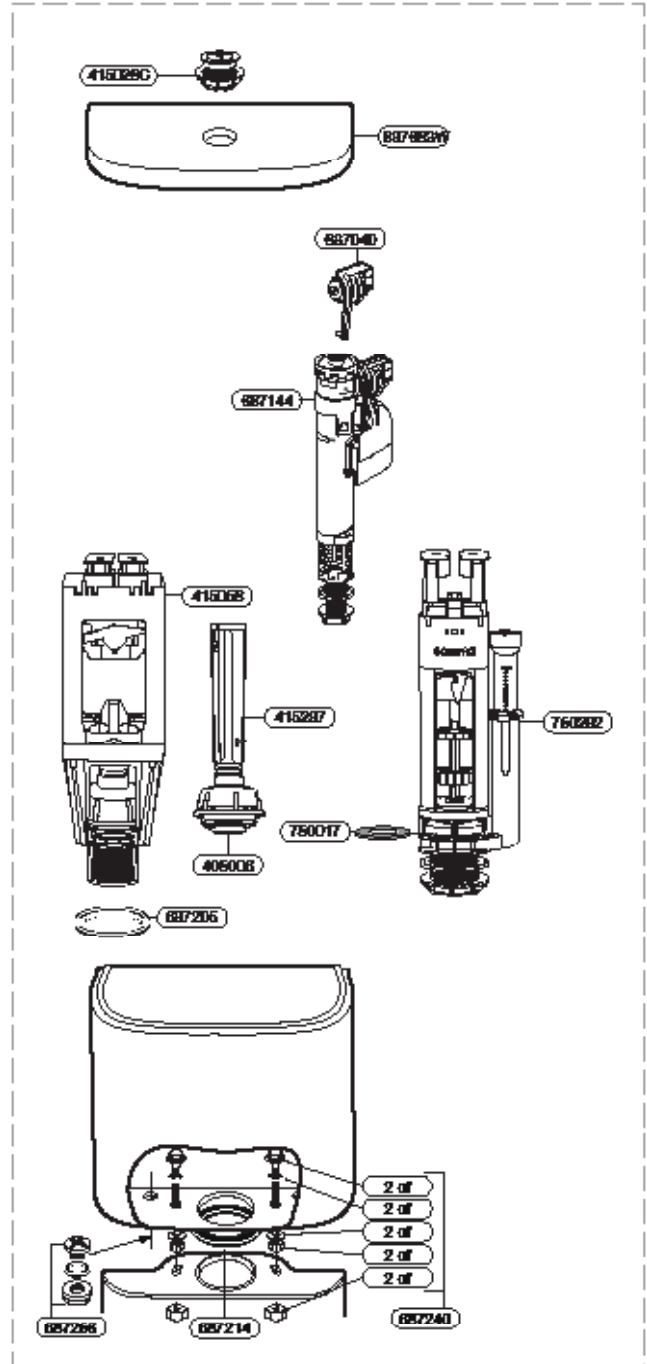


48mm "O" ring	103308	\$5
Quietflow spare parts pack	218005	\$8
Quietflow inlet valve	218259	\$20
3/4" BSP nut	232218	\$2
Tasman lid (buttons not included) White	800112W	\$13
Operating buttons	233131	\$13
Adapter - close coupling	242225	\$7
Nut adapter - close coupling	242226	\$7
20mm rubber washer	242308	\$2
Outlet valve repair kit	405006	\$6
Plug/washer/nut pack	405123	\$4
Tasman tank fixing bolts	405142	\$5
Tank-to-bowl foam seal	687218	\$10
Tasman operating mechanism	800103	\$14
Tasman bezel White	800286W	\$5

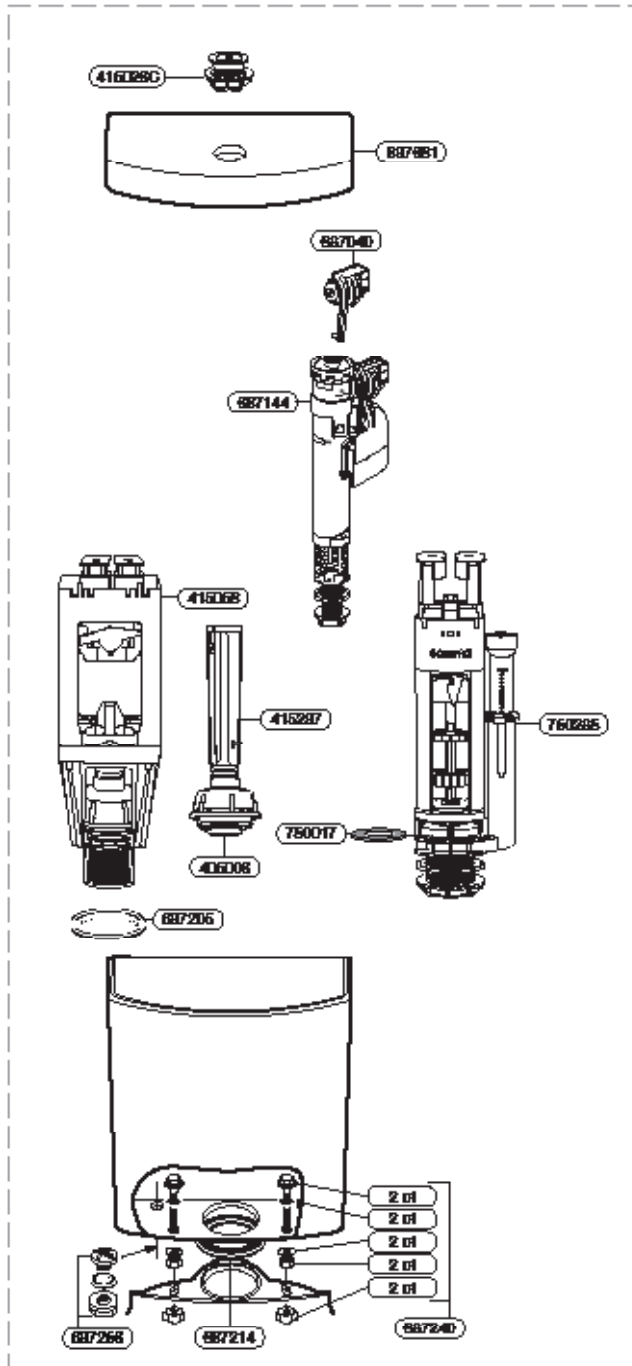
Adelaide Cube tank



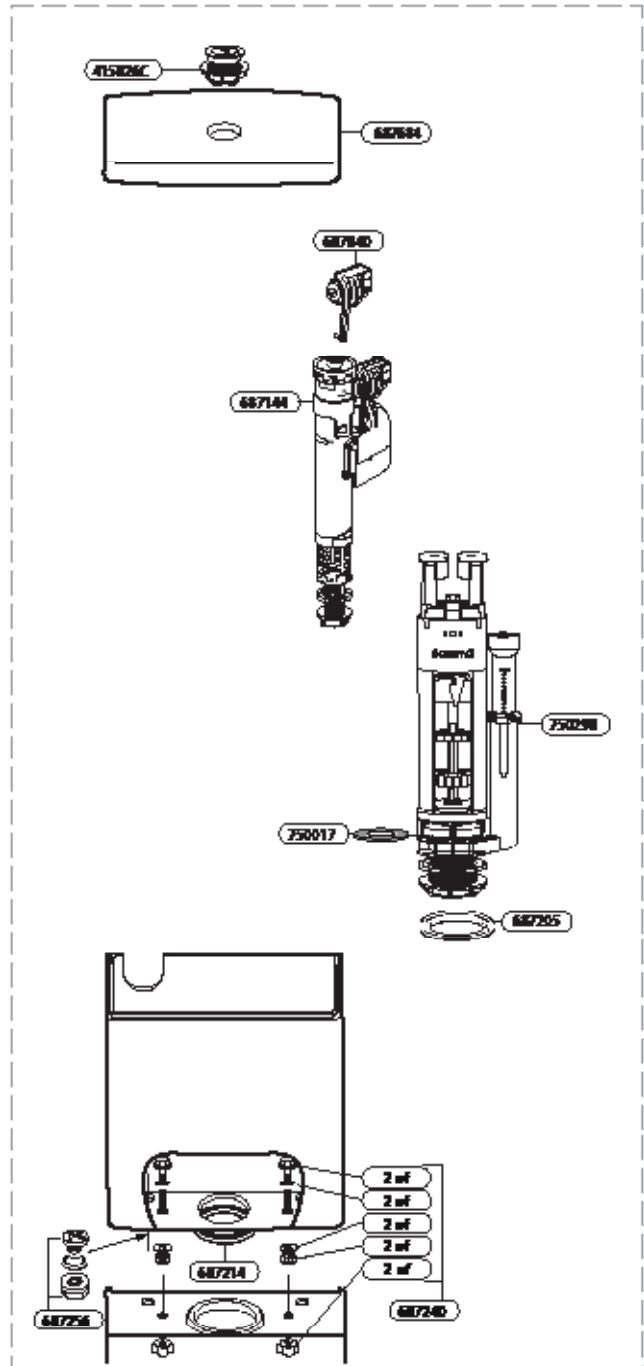
Adelaide Standard tank



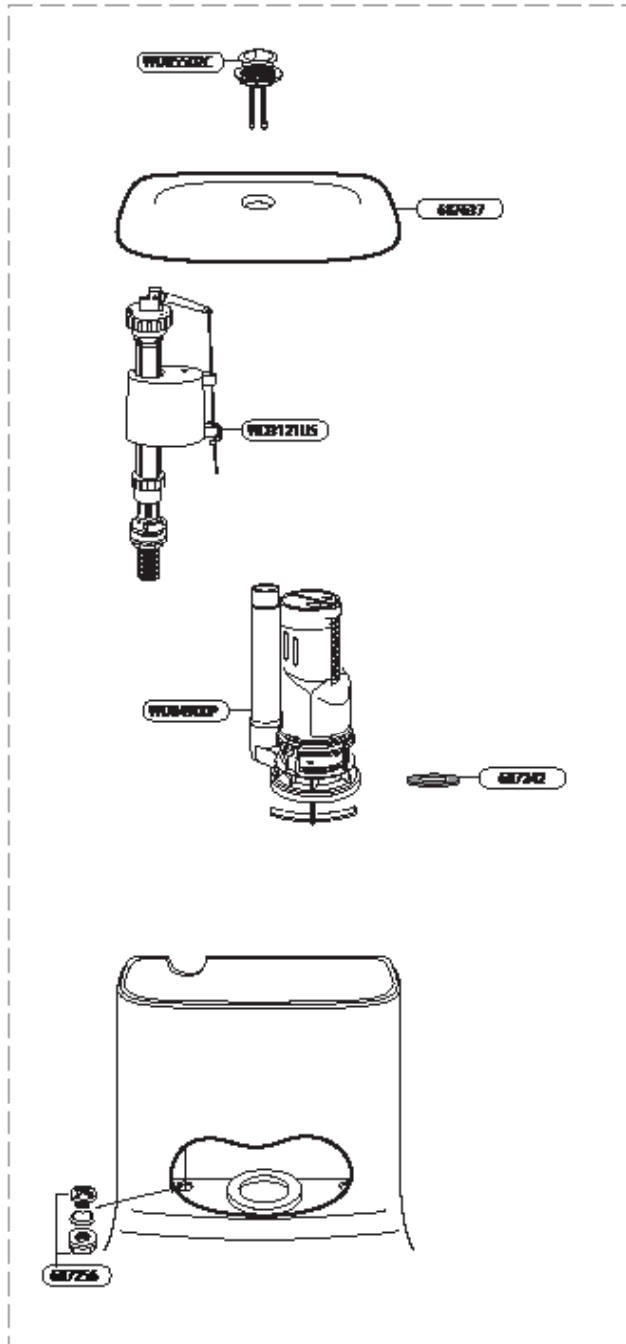
Bondi tank



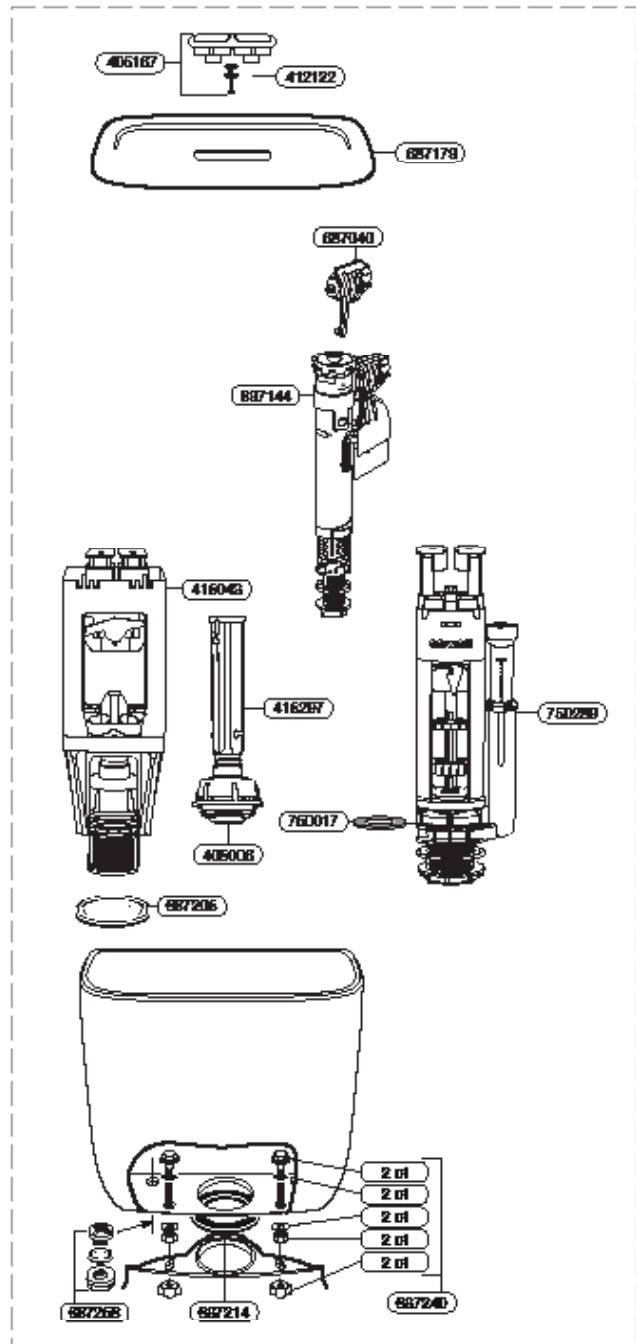
Brisbane tank



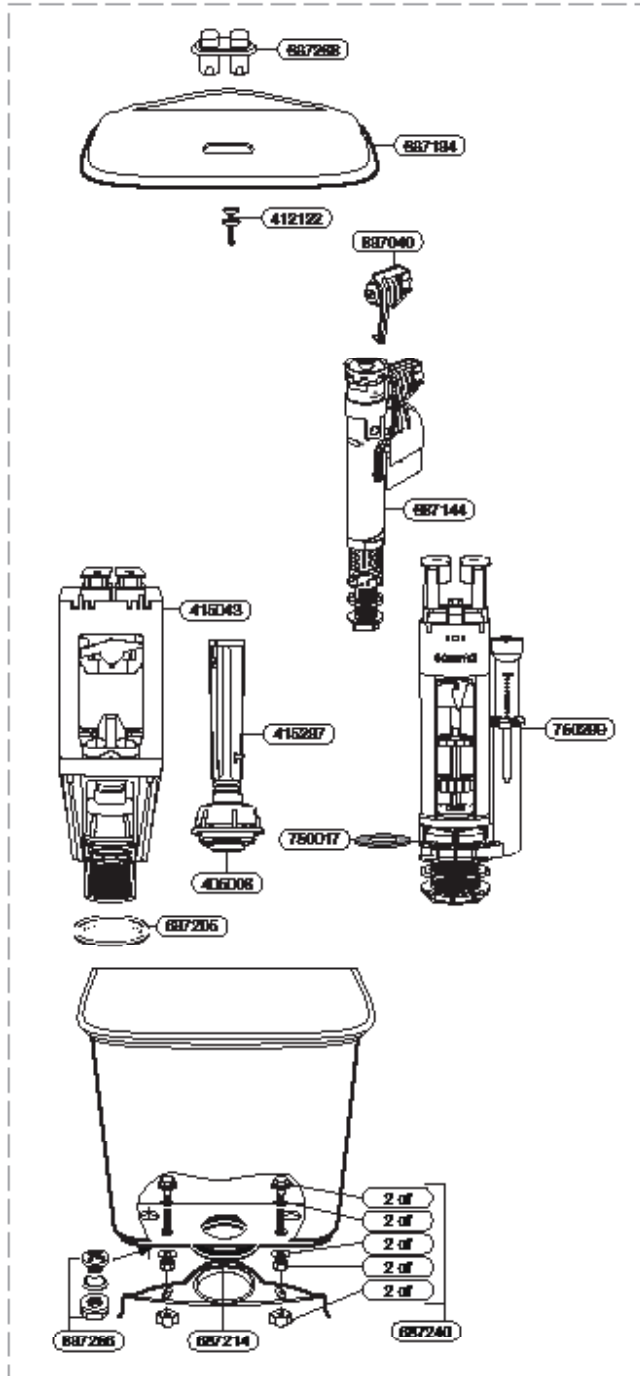
Caravelle One Piece and One Piece Easy Height - current tank model



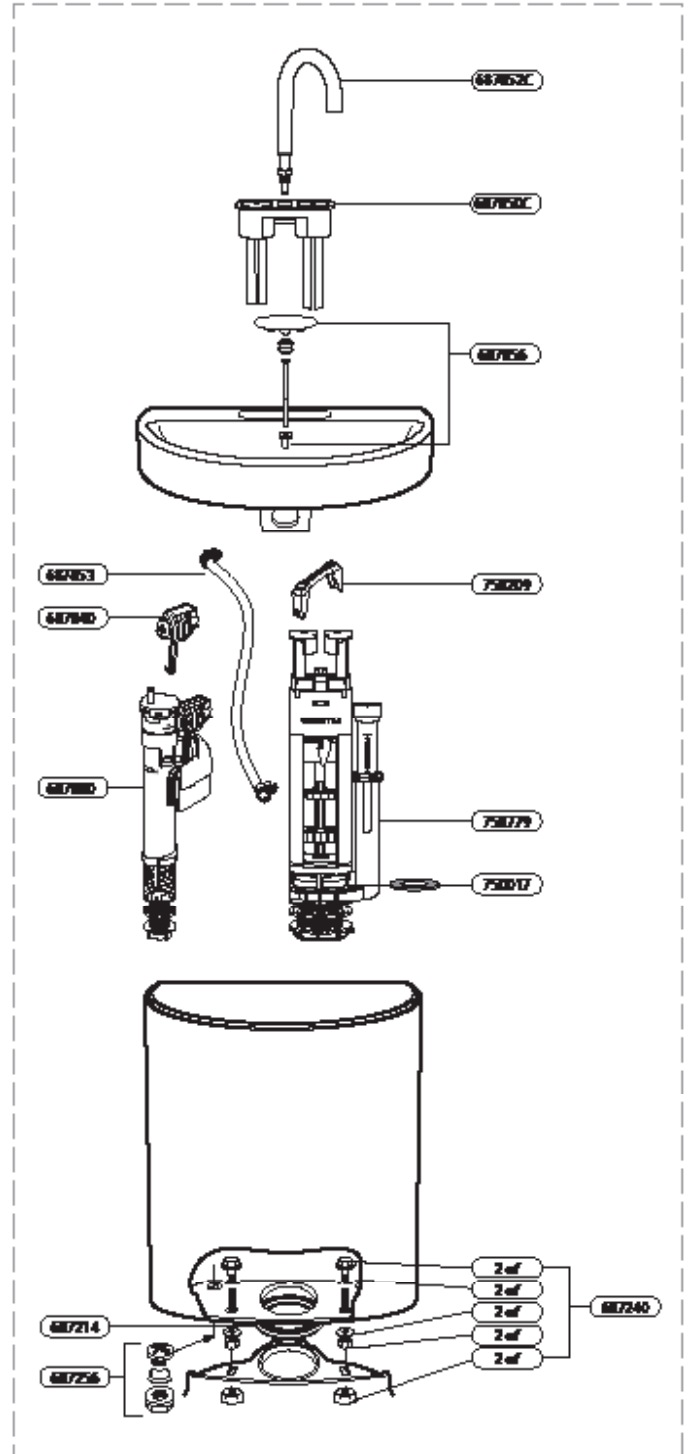
Caravelle two piece tank



Colonial tank

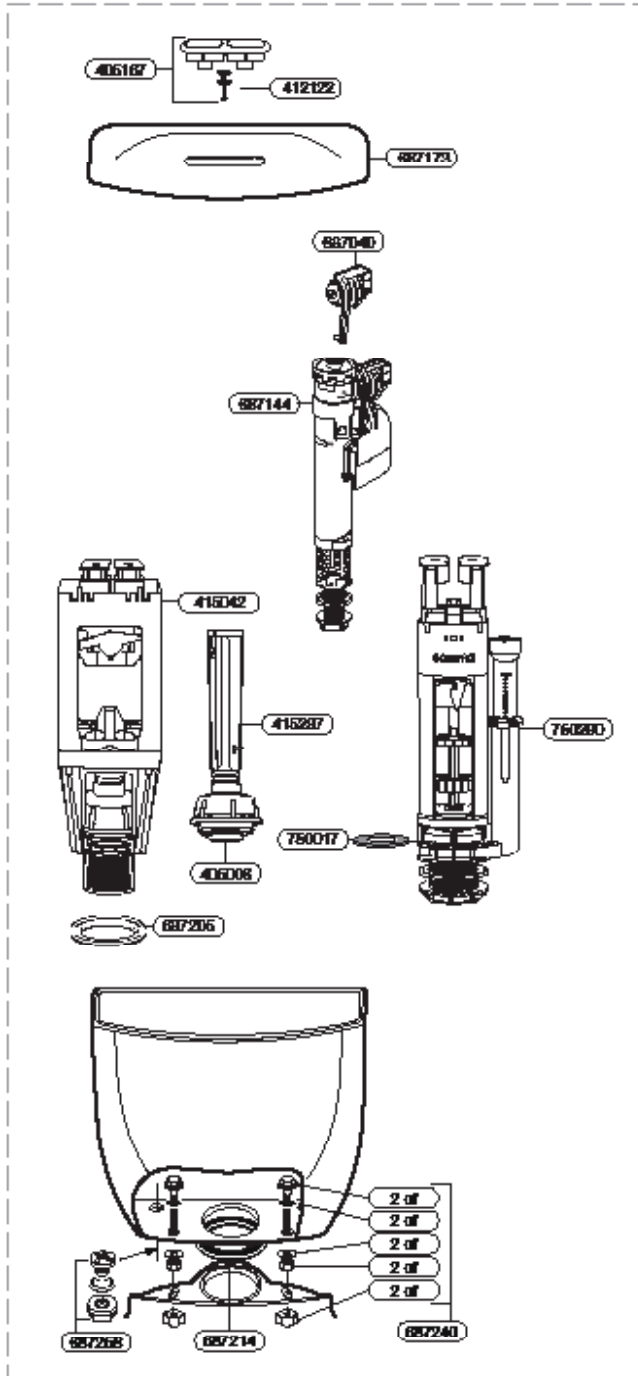


Profile Smart tank

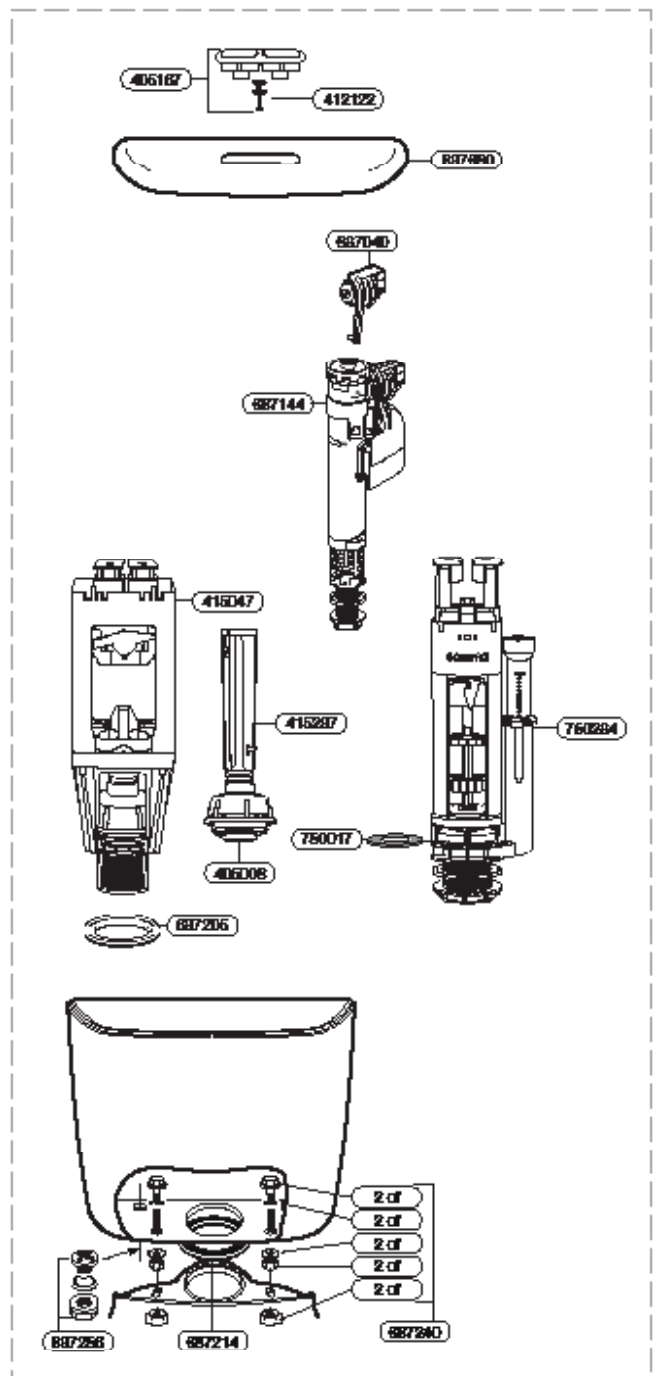


Contact your regional representative for information on Profile Smart spare parts.

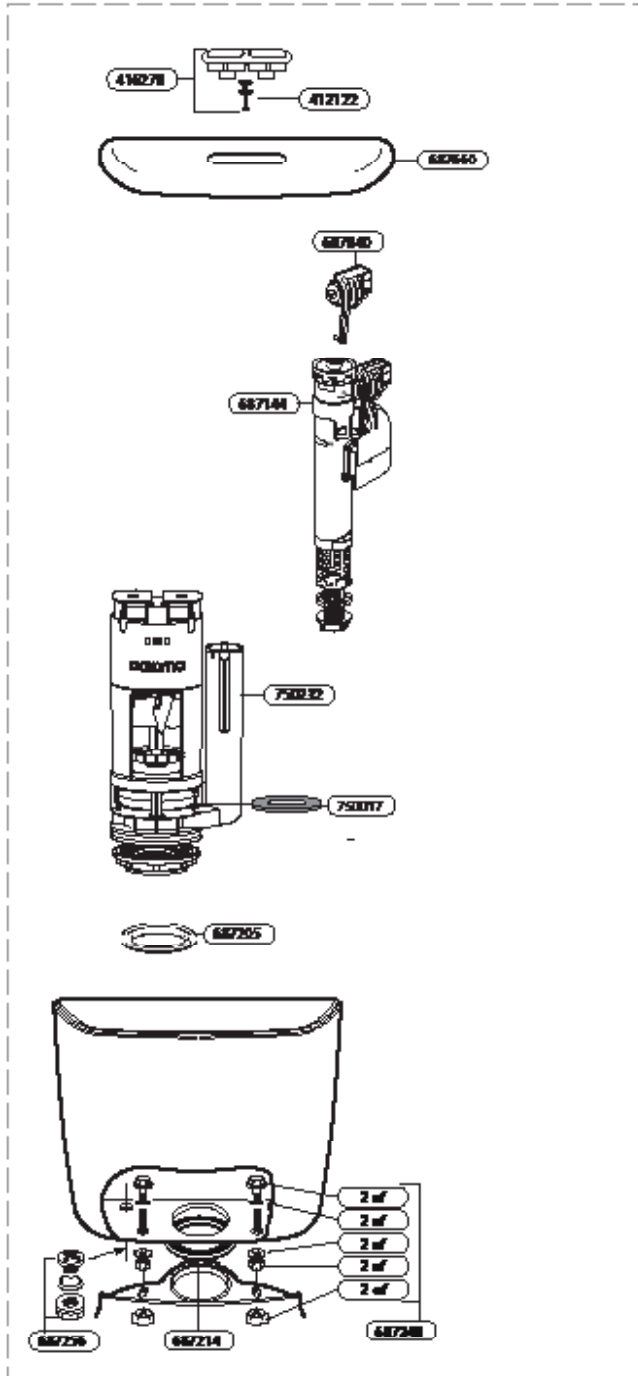
Royale tank



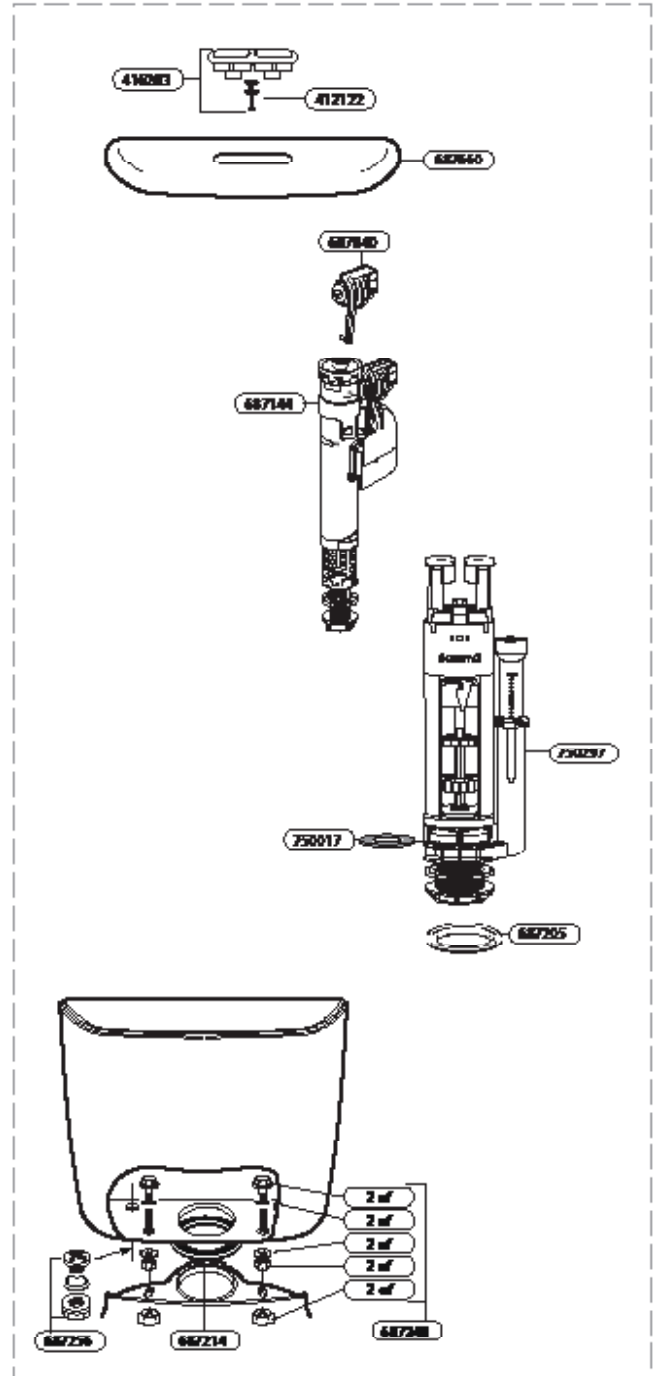
Sydney tank



Sydney Low Profile tank



Sydney Smart tank



Guarantee of Product — North America

Caroma guarantees its product for a period of 2 years (24 months) as follows:

1. Caroma Industries products are covered by warranty for materials and workmanship only (subject to any province or state laws). Caroma shall not be liable for any loss, damage, expense or inconvenience of any kind incurred, sustained, or suffered by any purchaser as a result of any defect or default in the Caroma product to which this warranty relates. In particular (but not as to affect the generality of the foregoing), Caroma shall not be liable for any loss, damage, expense, or inconvenience arising from:
 - a. the faulty installation of this Caroma product;
 - b. the combination, integration, or operation of this Caroma product with product not manufactured by Caroma, for the purpose of forming a w.c. suite;
 - c. where goods are used or adapted for a purpose for which they are not designed.
2. Caroma shall not be liable to replace any defective or faulty goods pursuant to Clause 1 of this warranty unless the purchaser proves to the satisfaction of Caroma that the goods were defective or faulty at the time when delivery was taken of them. Proof of purchase will be required prior to inspection.
3. No warranty condition, description or representation on the part of Caroma is given or implied by this After Sales and Service Information Sheet and any warranty condition description or representation as the state of quality or fitness for any purpose of the goods, whether expressed or implied by virtue, is hereby expressly excluded.
4. Statutory rights may vary from state to state or from province to province, in which case this warranty will not affect such statutory rights.
5. Should service be required, it is requested that a claim be made through the dealer or contractor from where the product was purchased.

Yours faithfully,
Caroma Industries Ltd.

CONDITIONS OF SALE

1. **General**
 - (a) Only these Terms and Conditions of Sale ("Terms and Conditions"), as may be varied under clause 1(c), govern the sale and purchase of Goods described in the Quotation issued by Company to Customer, and bind the Company. All other Terms and Conditions (including Customer's conditions of purchase, if any), warranties and representations are excluded and do not bind the Company.
 - (b) Agents or distributors of the Company's Goods have no power, right or authority, express or implied, to bind the Company.
 - (c) The Company may vary these Terms and Conditions by agreement in writing with Customer.
 - (d) A Quotation given to Customer is not an offer, and is valid only insofar as the Quotation constitutes terms for consideration for 90 days from the date of Quotation, or as otherwise stated.
 - (e) An order placed by Customer under a Quotation is not binding on the Company until accepted in writing by the Company. That acceptance by the Company of Customer's Quotation shall be effective to form a contract between the Company and Customer pursuant to the Company's acceptance and to the Terms and Conditions herein.

2. **Price**
 - (a) Prices for Goods will be as per the Company's Official Price List.
 - (b) Prices may be altered by the Company with 30 days' notice.
 - (c) (GST for Canadian Customers), delivery charges and extra (packaging) surcharges are payable by Customer.
 - (d) The Company may impose a handling and delivery charge on low value orders.
 - (e) Prices for the Goods specified on the Company's Official Price List are exclusive of all city, state and federal excise taxes, including, without limitation, taxes on manufacture, sales, receipts, gross income, occupation, use and similar taxes. Customer agrees to pay such taxes directly or to reimburse the Company for all such taxes, whether imposed on Customer, required to be collected by the Company or imposed on the Goods or on Customer in connection with this sale. Wherever applicable, such tax or taxes shall be added to the invoice as a separate charge or invoiced separately. Customer agrees to pay all personal property taxes that may be levied against the Goods after the date of delivery.

3. **Orders and Delivery**
 - (a) Orders for Goods cannot be suspended or cancelled except with the Company's consent. Customer shall pay all reasonable expenses incurred by the Company due to suspension or cancellation.
 - (b) Delivery Dates are estimates only and the Company is not liable for any loss or damage for failure to deliver by those dates. The Company shall not be liable for, nor shall the Company be in breach of its obligations to Customer because of, any delivery made within a reasonable time after the stated Delivery Date.
 - (c) The Company may make partial deliveries of any order and render an invoice to Customer for the Goods delivered. Failure to make delivery of the total order will not invalidate the sale of Goods delivered.

4. **Returns**
 - (a) Goods are sold on a non-return basis and unless damaged (refer to clause 8) or incorrectly delivered (refer to clause 3) cannot be returned.
 - (b) All returns must receive the prior approval of the Company.
 - (c) The Company reserves the right to inspect Goods to be returned.
 - (d) Goods must be returned according to the Company's procedure for returns for credit or replacement.
 - (e) Customer must retain signed return documentation as proof of a return.
 - (f) Unless damaged or incorrectly delivered, a re-stocking fee of 25% applies to all Goods returned and is payable within 30 days of the end of the month in which the credit is issued.

5. Payment
 - (a) Customer must pay the Invoice Value within 30 days of the end of the month of delivery of the Goods (i.e. net 30 days).
 - (b) Any Goods returned or to be returned by Customer under clause 4 do not alter the payment terms on an invoice.
 - (c) The Company may impose a service charge of up to 2% per month (calculated on daily balances) on overdue amounts.
 - (d) Customer shall be liable for all costs incurred by the Company in recovering outstanding monies from Customer, including collection agency fees, court costs and bank dishonour fees.
 - (e) If any payment is overdue, the Company reserves the right to suspend any other deliveries to Customer.

6. Risk and Ownership of Goods
 - (a) All shipments covered by these Terms and Conditions are F.O.B. destination. The Company's liability for delivery shall cease upon the Company making delivery to Customer at the F.O.B. point.
 - (b) Title and ownership of the Goods shall transfer from the Company to Customer upon delivery by the Company, and receipt of the Goods, by Customer.
 - (c) The Company at its discretion may require a security interest in the Goods and in the proceeds of those Goods, perfected by the filing of a UCC-1 financing statement, which security interest shall not be terminated until Customer has made full payment for all Goods whatsoever sold by the Company to Customer, whether:
 - (i) under these conditions or any other contract or agreement;
 - (ii) the Goods are similar to the goods the subject of these conditions or not;
 - (iii) such indebtedness is pursuant to a written, oral or partly written and oral contract;or
 - (iv) such indebtedness is on a current account, a trading account or otherwise.
 - (d) Notwithstanding clause 6(b), Customer may still sell the Goods, but only in the ordinary course of business. However, if it does so, the proceeds of sale shall be held for the Company until all Goods are fully paid for by Customer.
 - (e) If Customer enters into any form of bankruptcy, insolvency, or similar proceeding prior to full payment of the Goods by Customer, or the Company requires Goods to be returned due to non-payment, Customer must return Goods to the Company on demand. If Customer does not return the Goods to the Company within 48 hours of receipt of the demand (or such other time, if any, specified by the Company), the Company may at any time do all things necessary to recover the Goods to the value of the non-payment. Customer is liable for all costs associated with the exercise by the Company of its rights under this clause 6(d).

7. Damage, Shortage, Loss In Transit and Defective Goods
 - (a) Unless otherwise agreed, Customer must advise the Company of any damaged or shortage of Goods within 48 hours after the Delivery Date, otherwise no liability will be accepted.
 - (b) Goods subsequently found to be defective must be reported immediately when the defect is discovered and any reported defects shall be supported with pictures and documentation

8. Limitation of Liability
 - (a) Unless otherwise agreed, damaged Goods (excluding unavoidable imperfections) will be credited or replaced if the Company is advised within 14 days after the Delivery Date, and the damaged Goods are made available for inspection and return to the Company may elect to:
 - (i) replace the damaged Goods; or
 - (ii) pay the cost of obtaining equivalent products; or
 - (iii) pay the cost of having the damaged Goods repaired.

(b) In no event shall the Company be liable for any special, incidental, exemplary, punitive or consequential loss, indirect costs or damages including without limitation, litigations costs, installation and removal costs, re-procurements or replacement costs, loss of data, production, opportunity, goodwill or profit arising from any cause whatsoever, regardless of the form of the action, whether in contract, tort (including negligence), strict liability, or otherwise, even if advised of the possibility of such costs or damages.

9. Limited Warranty

The Company warrants that Goods delivered hereunder shall be free from defects in material and workmanship under normal use and service for a period, as specified on the Company's web site. If, during the specified period (a) the Company is notified as per clause 7(b); (b) Customer returns such Goods to the Company, F.O.B. the Company's facility; and (c) the Company's examination of such Goods discloses to the Company's satisfaction that such Goods are defective and such defects are not caused by accident, abuse, misuse, neglect, alteration, improper installation, repair or alterations by someone other than the Company, improper testing, or use contrary to any instructions issued by the Company, then within a reasonable time the Company shall (at its sole option) either repair, replace or credit Customer for such Goods. The Company shall return any Goods repaired or replaced under this warranty to Customer, transportation prepaid and reimburse Customer for the transportation charges paid by Customer for such Goods. The performance of this warranty does not extend the warranty period for any Goods beyond that period applicable to Goods originally delivered. This limited warranty excludes engineering samples, which are provided "as is" without warranty, and Goods that have been subject to misuse, mishandlings, accident, alteration, neglect, unauthorized repair or installation. Furthermore, this limited warranty shall not apply to the use of Goods in any application or environment that is not within the Company's specifications or in the event of any act, error, neglect or default of customer. THE FOREGOING LIMITED WARRANTY CONSTITUTES THE COMPANY'S EXCLUSIVE LIABILITY, AND THE EXCLUSIVE REMEDY OF CUSTOMER, FOR ANY BREACH OF ANY WARRANTY OR OTHER NONCONFORMITY OF GOODS. THIS WARRANTY IS EXCLUSIVE, AND IN LIEU OF ALL OTHER WARRANTIES, EXPRESS, IMPLIED OR STATUTORY, INCLUDING BUT NOT LIMITED TO THE WARRANTIES OF MERCHANTABILITY AND FITNESS FOR A PARTICULAR PURPOSE, AND ANY WARRANTY THAT MAY ARISE FROM COURSE OF DEALING, COURSE OF PERFORMANCE, OR USAGE OF TRADE, ALL OF WHICH ARE HEREBY EXPRESSLY DISCLAIMED.

10. Trademarks

(a) Customer cannot use the Company's trademarks and trade names without the prior written approval of the Company.

(b) All right, title and interest in and to the intellectual property and other proprietary rights embodied in the Goods shall be retained by the Company. No right or license therein is transferred to the Customer under these Terms and Conditions. The Company reserves all rights in such intellectual property and other proprietary rights.

11. Changes to Specifications; Discontinuance

The Company reserves the right to make any changes in the specifications of the Goods that do not materially alter their quality or performance, or where change is necessary to conform to any applicable safety or other statutory requirements. The Company also reserves the right to discontinue the sale of the Goods at any time, in its sole absolute discretion.

12. Explanatory Material

(a) Explanatory Material provided to Customer does not bind the Company, and does not constitute any form of representation by the Company.

(b) The Company may amend its Explanatory Material without notice to Customer.

13. Non Performance

The Company is not responsible for any lack of operation or performance of the Goods (and any loss or damage) where they are:

- (a) used or adapted for a purpose for which they were not designed;
- (b) combined or integrated with other products not manufactured by the Company.

14. Force Majeure

The Company is not liable for any failure to comply with these conditions where the failure is due to circumstances which are not directly within the Company's control or force majeure, including, but not limited to, acts of terrorism, natural disaster, industrial action, or a failure of a supplier, public utility or common carrier.

15. GST (for Canadian Customers)

- (a) Customer will be liable for GST on any taxable supply by the Company to Customer.
- (b) The Company reserves the right to raise tax adjustment notes and recipient tax invoices when necessary.
- (c) Customer must supply the Company with its ABN (where applicable) prior to or at the time of placing order with the Company.

16. Waiver

No failure by the Company to enforce or take advantage of any provision hereof shall constitute a waiver of the right subsequently to enforce or take advantage of such clause or any other clause hereof.

17. Governing Law

The laws of the State of Delaware, United States of America shall govern in all respects as to the validity, interpretation, construction and enforcement of these Terms and Conditions, without reference to conflicts of laws principles. The U.N. Convention on Contracts for the sale of International Goods shall not apply.

18. Entirety of Agreement

These Terms and Conditions set forth the entire understanding and agreement of the parties with respect to the subject matter hereof and supersede all other oral or written representations and understandings. These Terms and Conditions may only be amended or modified per clause 1(c).

19. Privacy Act

Customer agrees to the Company obtaining information about the financial standing and credit worthiness of Customer.

20. Definitions

Company: Caroma USA, Inc., but shall not include Caroma Industries Ltd ABN 35 000 189 499, or any director, officer, employee, agent or representative of either company for any purpose whatever.

Customer: the person or company named in the sales invoice or Quotation issued for the Goods by the Company.

Delivery Date: the date on which the Goods are delivered to Customer.

Invoice Value: the amount stated in the Company's invoice for Goods ordered by Customer.

Explanatory Material: drawings, specifications, explanatory literature and any other materials prepared by the Company for descriptive or explanatory purposes.

Goods: those goods ordered by Customer from the Company from time to time.

Official Price List: the list of prices of Goods set out in the Company's price book or price file or price notifications from time to time.

Price: the price for Goods contained in the Official Price List.

Quotation: a quotation submitted by the Company to Customer for Goods.



Invisible by Design

Introducing Invisi™ Series II
Dual-flush Innovation Meets Smart Design

1.28gpf/4.8L (solid flush)
0.8gpf/3L (liquid flush)



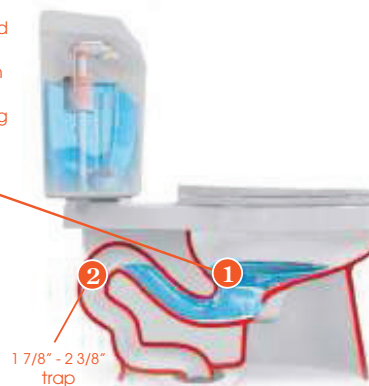
Caroma®

Dual-flush Technology that Performs.



- Caroma® Smart Technology Boasts 1.28/0.8gpf (4.8/3Lpf)
- One of the Lowest Consumption HET's on the Market with an Average 0.9gpf (3.6L)
- WaterSense® Labeled
- Over-sized Roman Trapway that Virtually Eliminates Blockages
- ADA Compliant
- Reliable Construction and Superior Quality
- Easy to Install, Even Easier to Maintain

Antiquated Siphonic Flush
Most of the flush volume is used to create a siphon and "pull" water from the bowl. A portion of the flush volume is used to recharge the trap seal (making this an inferior system).



Caroma® Dual-flush with WashDown

Flush volume is used to "push" waste from the bowl and into the drain line.

Adjustable rough-in on select models.

Caroma® toilets include a trapway area which is nearly double that of the industry standard.

Siphonic vs. Caroma® Dual-flush with WashDown

Caroma: the Leaders in Dual Flush Technology

Lowest water use dual flush toilets
in North America

Virtually clog-free

Easy installation

Proven technology

47 WaterSense labeled toilets (November 2010)

Award-winning products



Cribo® Ultra Urinal



Caroma
Phone: +1 800 605 4218
Fax: +1 800 605 2912
Website: www.caromausa.com
Email: info@caromausa.com

HIGH EFFICIENCY TOILET
HET

HIGH EFFICIENCY URINAL
HEU



c-UPC®
IAPMO listed for USA & Canada