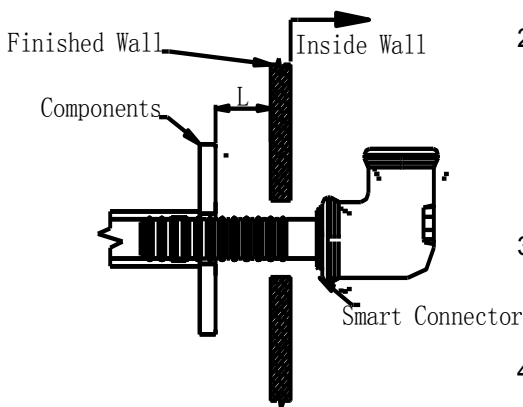


Installation of “Speed Connector”

- 1 Screw and securely tighten “Speed Connector” with a 5/16” (8mm) Allen wrench into 1/2” NPT female adapter behind the wall after wrapping threads with Teflon tape.



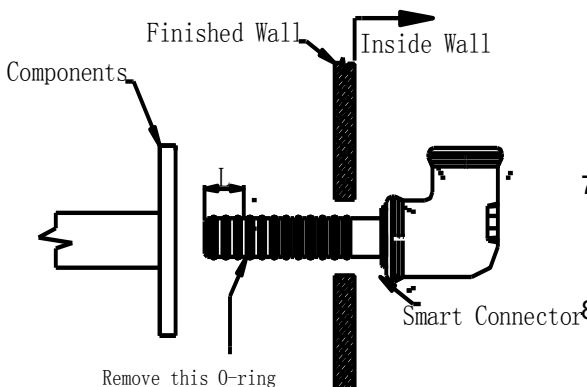
- 2 Slide the fluid components over the “Speed Connector” until they come to a stop. If they come to rest at the final installation position against the finished wall, then no cutting is required. Simply proceed to step 10. If they stop short of the wall, proceed to step 3.

- 3 Measure the gap/distance “L” between the components and the finished wall.

- 4 Remove the components from the “Speed Connector”.

- 5 Mark the previously measured distance “L” from the tip of “Speed Connector”.

- 6 Remove O ring closest to the mark (distance “L”) toward the finished wall. Ensure that a minimum of 2 O-rings of the “Speed Connector” remain outside the finished wall are fully inserted into the fluid part being installed.



- 7 With a hacksaw, cut at groove (with O ring removed) to eliminate excessive length.

- 8 Sand or file clean the cutting location to remove burrs and foreign materials.

- 9 Slide the components over “Speed Connector” against the finished wall.

- 10 Secure the components by tightening set screw(s) with Allen wrench.



Need Help?

For additional assistance call

Toll Free: 1-800-460-7019

Fax: 1-604-430-5050

Email: help2016@sustainable-solutions.com